

1



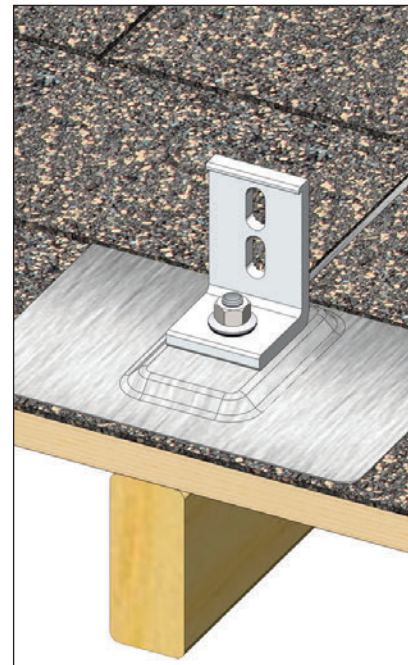
2



3



4



5

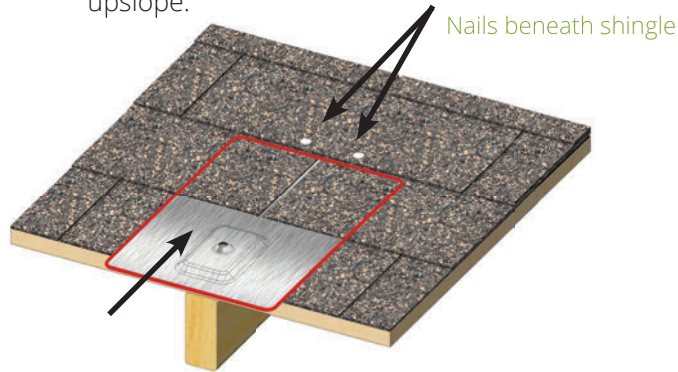
1. Locate the rafters and snap horizontal and vertical lines to mark the installation position for each QuikFoot.
2. Install base as shown using appropriate fasteners.\*
3. Insert the flashing so the top part is under the next row of shingles and pushed far enough up slope to prevent water infiltration through vertical joint in shingles.
4. Install bare EPDM washer on stud, pushing it down until it is flush with the top of the flashing.
5. Apply compression bracket to stud. Install bonded washer with rubber side down, and tighten stainless nut to 50 inch-pounds.

Consult an engineer or go to [www.ecofastensolar.com](http://www.ecofastensolar.com) for engineering data.

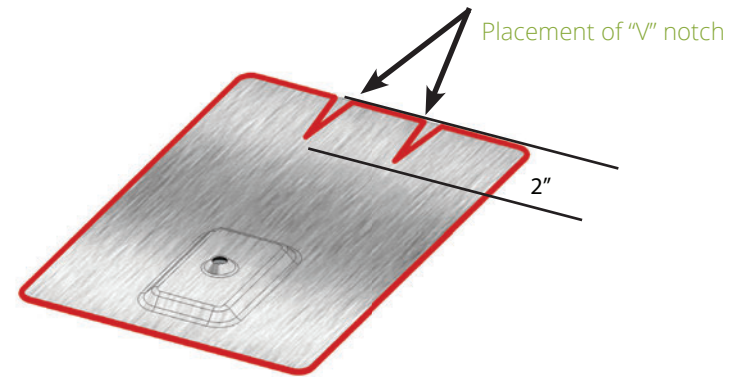
\*EcoFasten recommends XHD fasteners by OMG.

\* Use for vertical adjustment when leading edge of flashing hits nails in upper shingle courses

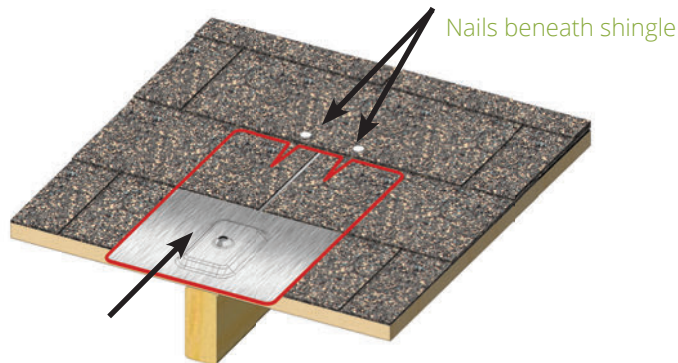
1. Slide flashing up under shingles until leading edge engages nails. Measure remaining distance to adjust upslope.



2. Remove flashing and cut "V" notch at marks where nail shafts engaged leading edge of flashing the distance desired in Step 1. Notch depth not to exceed 2" length by 1/2" width.



3. Reinstall flashing with notched area upslope.



4. Position notched leading edge underneath nail heads as shown.

