

QuikFoot[®] PRODUCT GUIDE

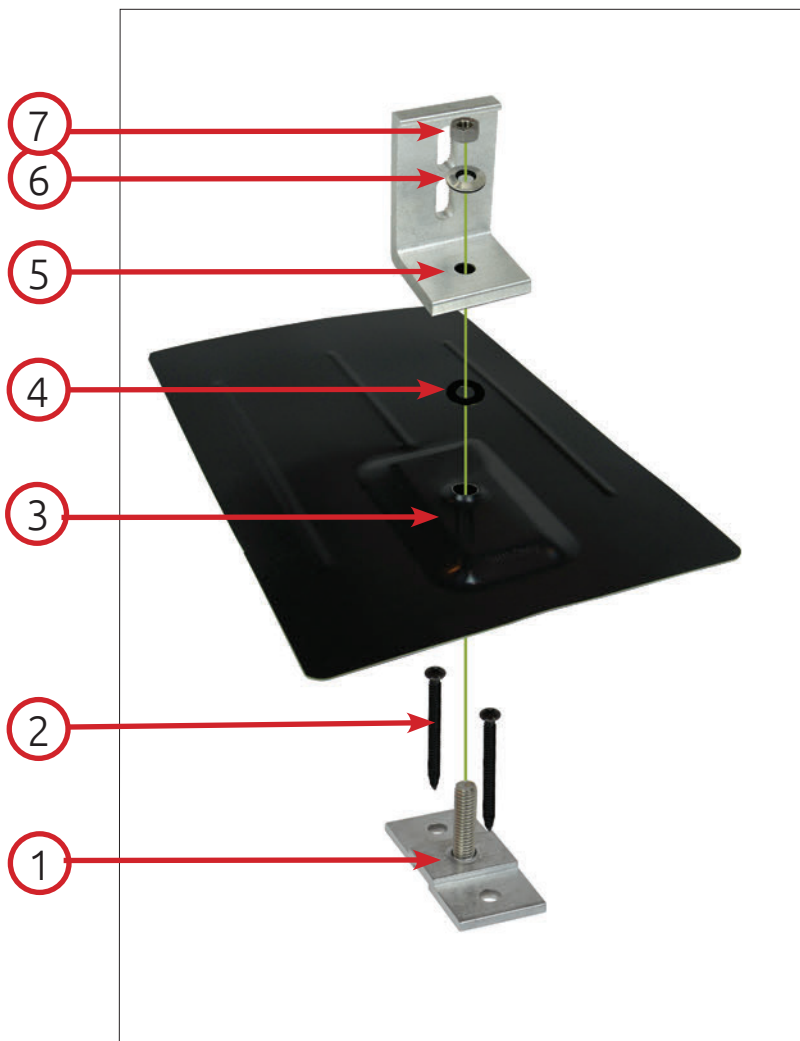
Exploded Product View/B.O.M. – 1

Installation Instructions – 2

Cut Sheets – 3

Specifications – 4

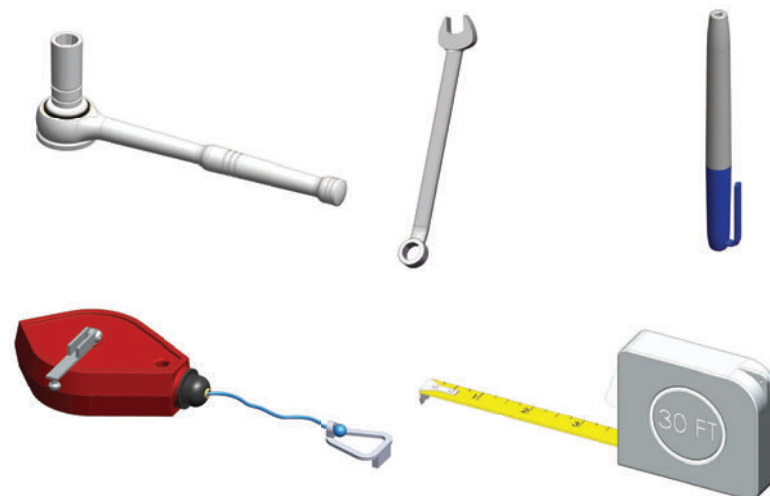


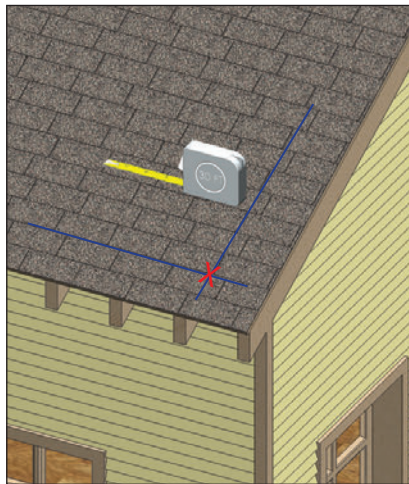


Materials Needed for Assembly

Item No.	Description of Material/Part	Quantity
1	QuikFoot Base Plate	1
2	Fastener (Length to be determined)	2
3	QuikFoot Flashing	1
4	EPDM Washer	1
5	L-102-3" Bracket * (other options available)	1
6	5/16" EPDM Bonded 18.8 SS Washer	1
7	3/8" Stainless Steel Hex Nut	1

Required Tools





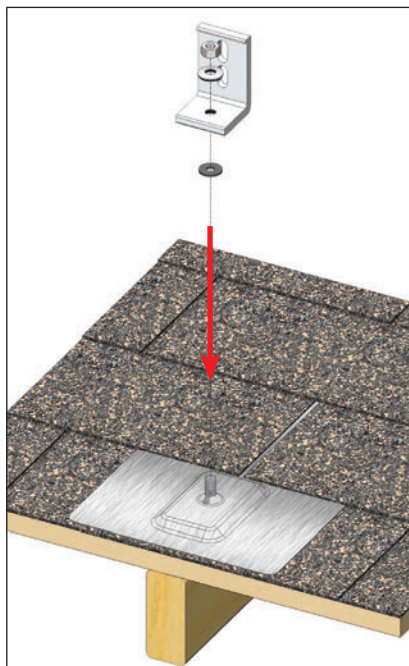
1



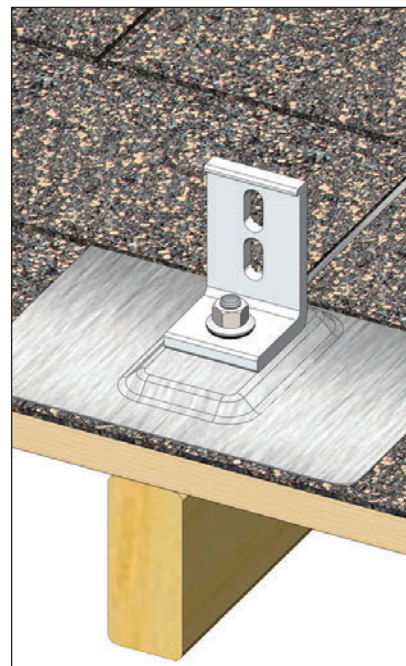
2



3



4



5

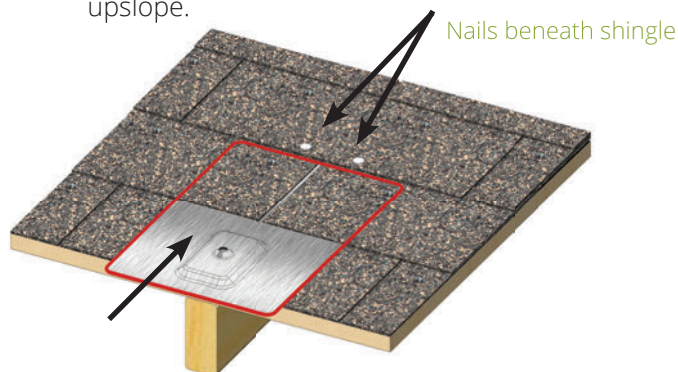
1. Locate the rafters and snap horizontal and vertical lines to mark the installation position for each QuikFoot.
2. Install base as shown using appropriate fasteners.*
3. Insert the flashing so the top part is under the next row of shingles and pushed far enough up slope to prevent water infiltration through vertical joint in shingles.
4. Install bare EPDM washer on stud, pushing it down until it is flush with the top of the flashing.
5. Apply compression bracket to stud. Install bonded washer with rubber side down, and tighten stainless nut to 50 inch-pounds.

Consult an engineer or go to www.ecofastensolar.com for engineering data.

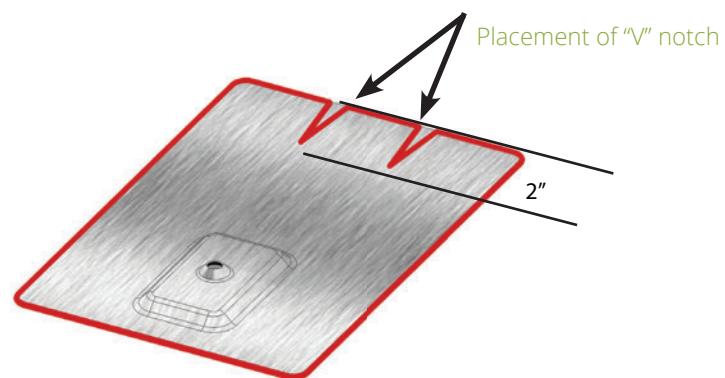
*EcoFasten recommends XHD fasteners by OMG.

* Use for vertical adjustment when leading edge of flashing hits nails in upper shingle courses

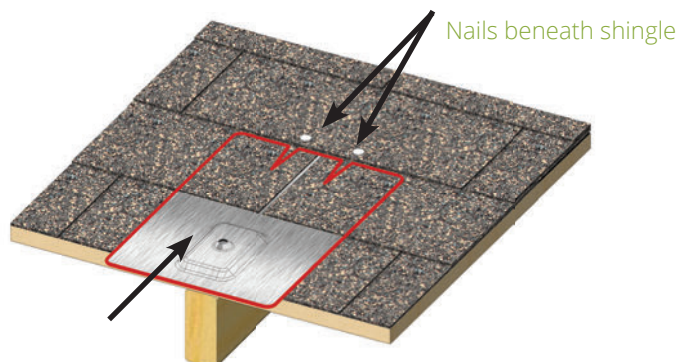
1. Slide flashing up under shingles until leading edge engages nails. Measure remaining distance to adjust upslope.



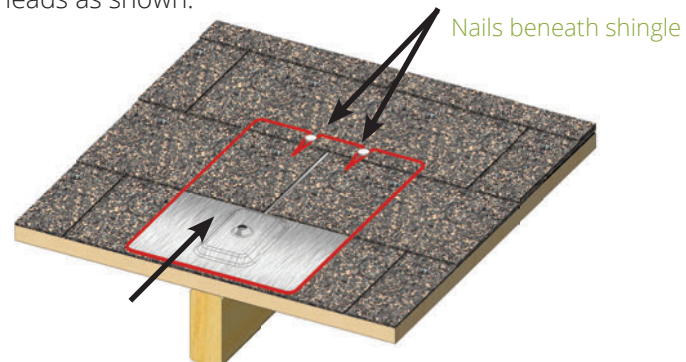
2. Remove flashing and cut "V" notch at marks where nail shafts engaged leading edge of flashing the distance desired in Step 1. Notch depth not to exceed 2" length by 1/2" width.

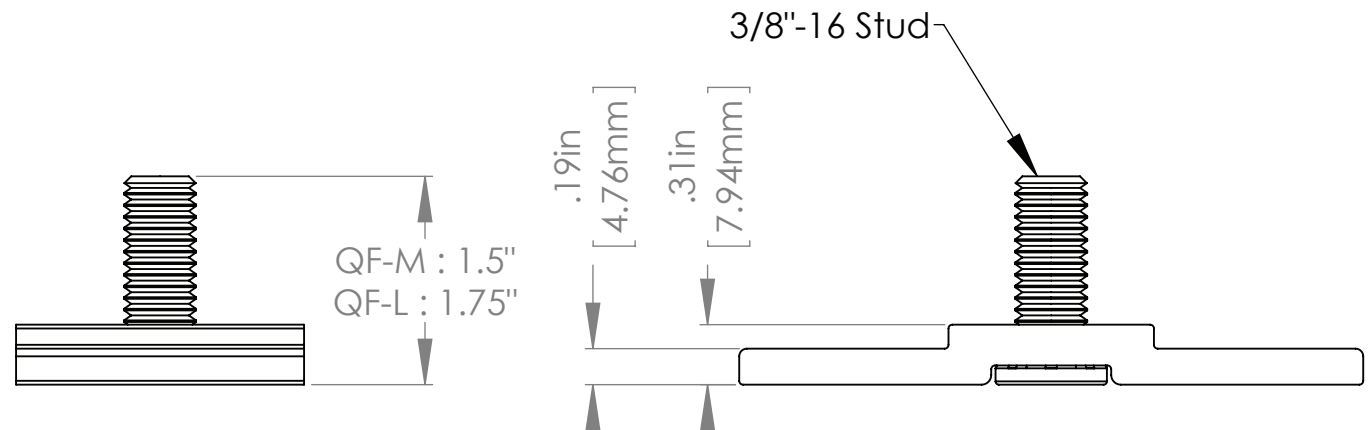
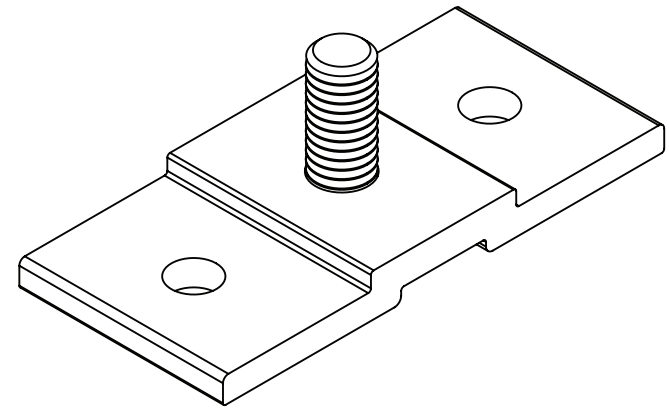
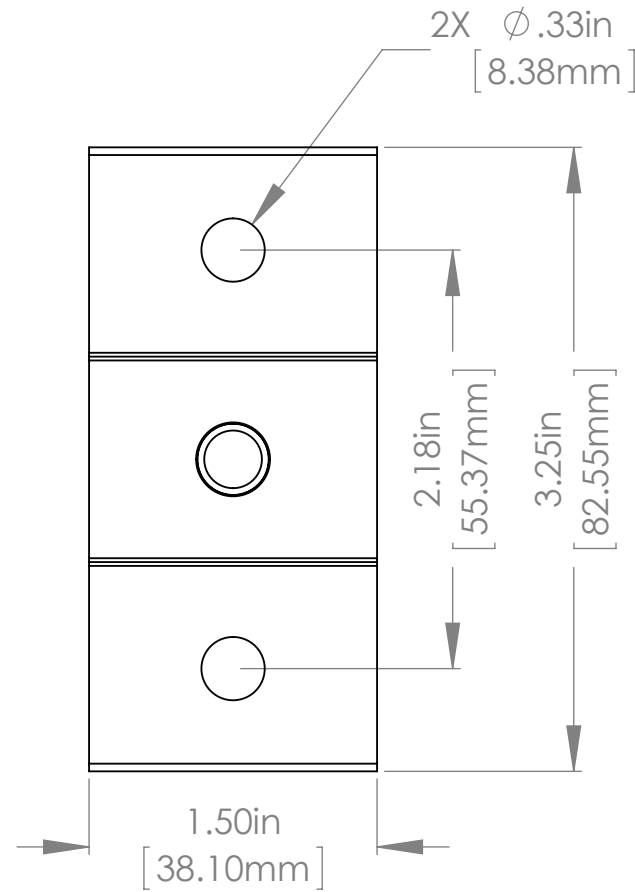


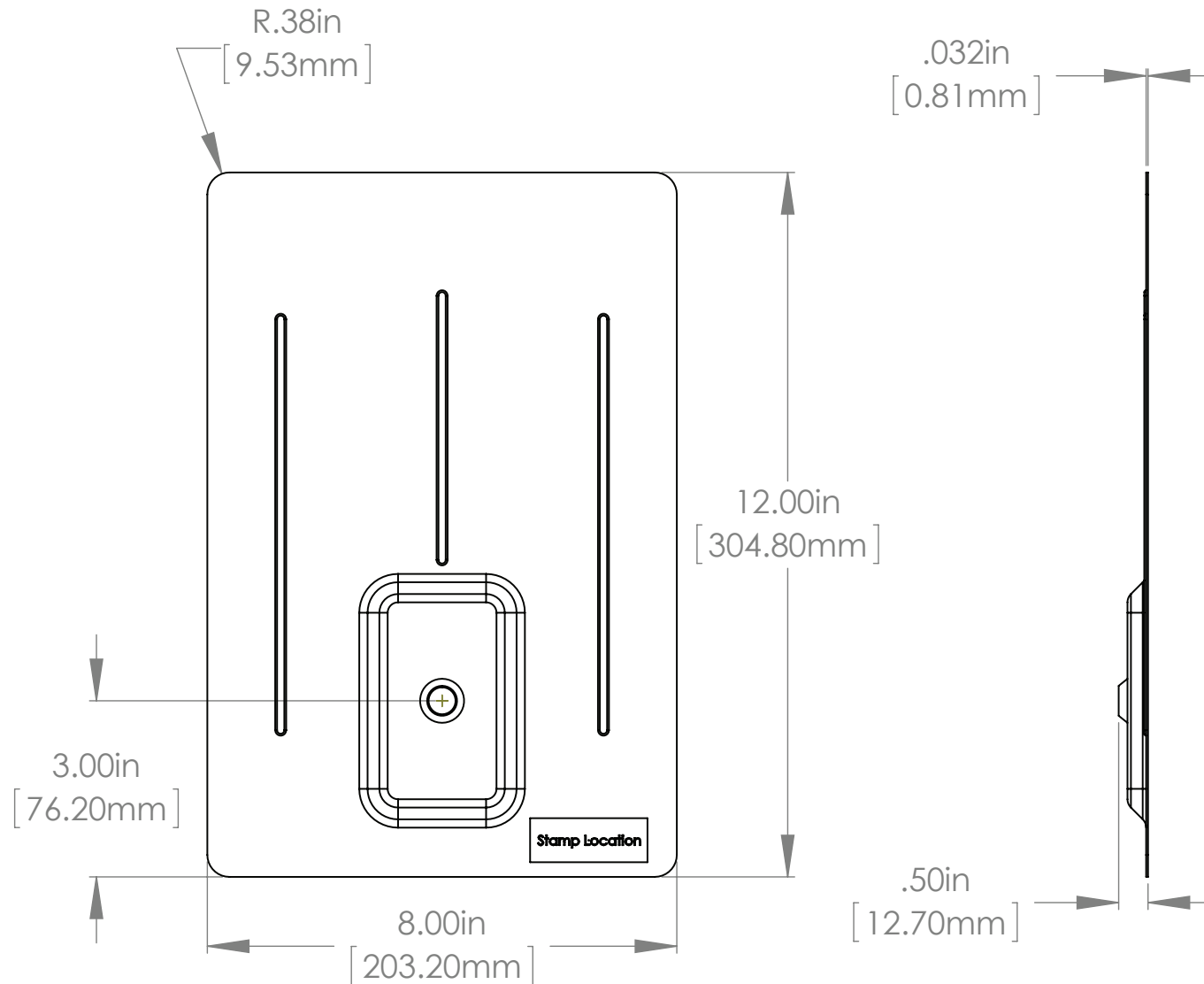
3. Reinstall flashing with notched area upslope.

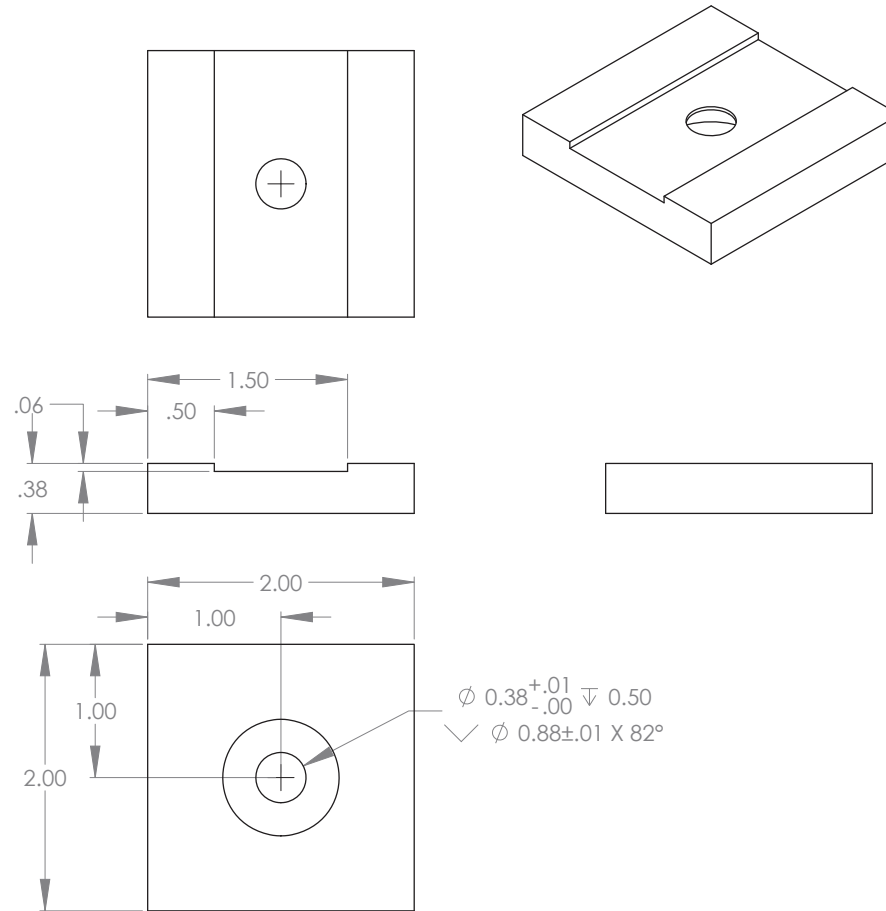


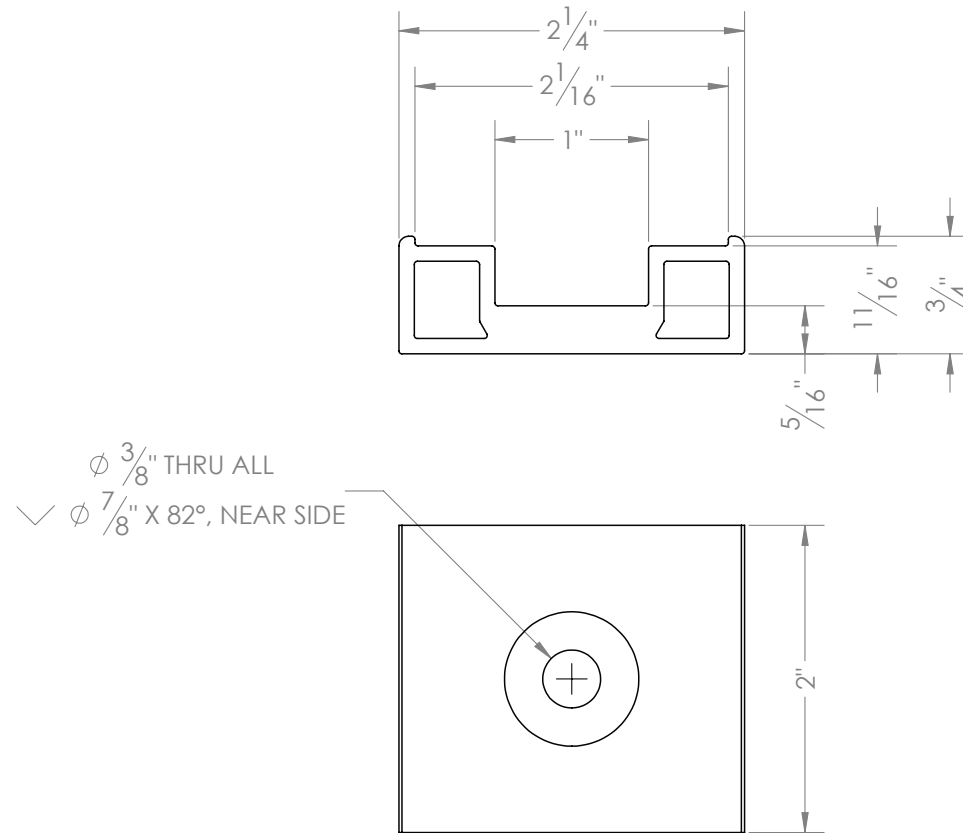
4. Position notched leading edge underneath nail heads as shown.

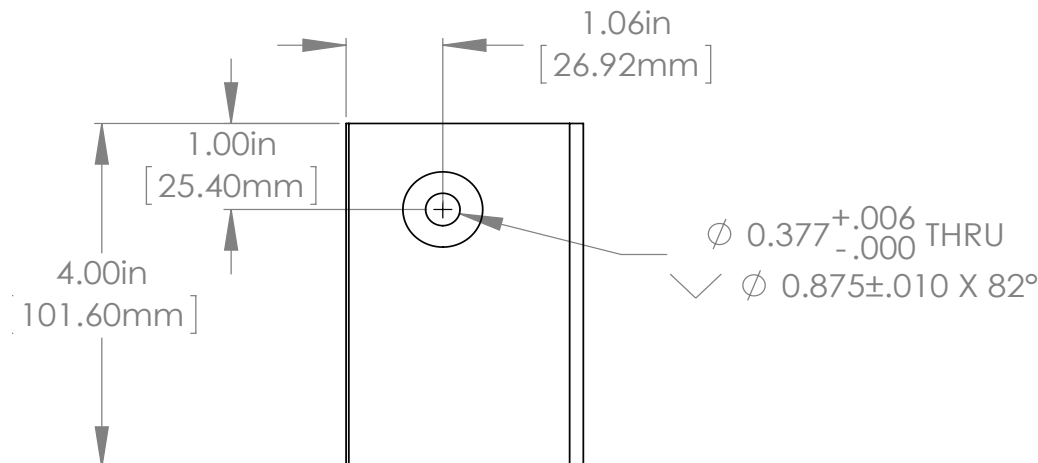
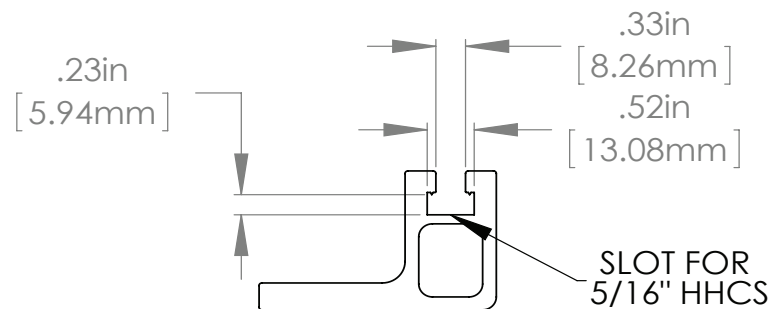
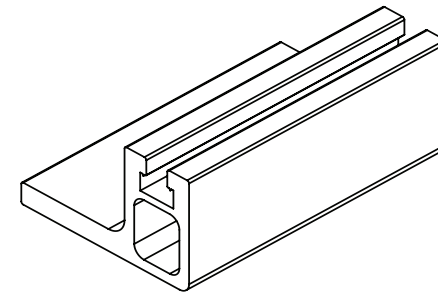
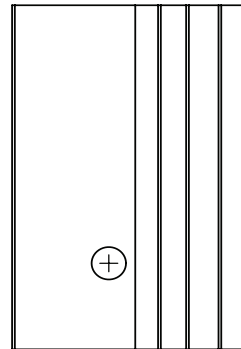


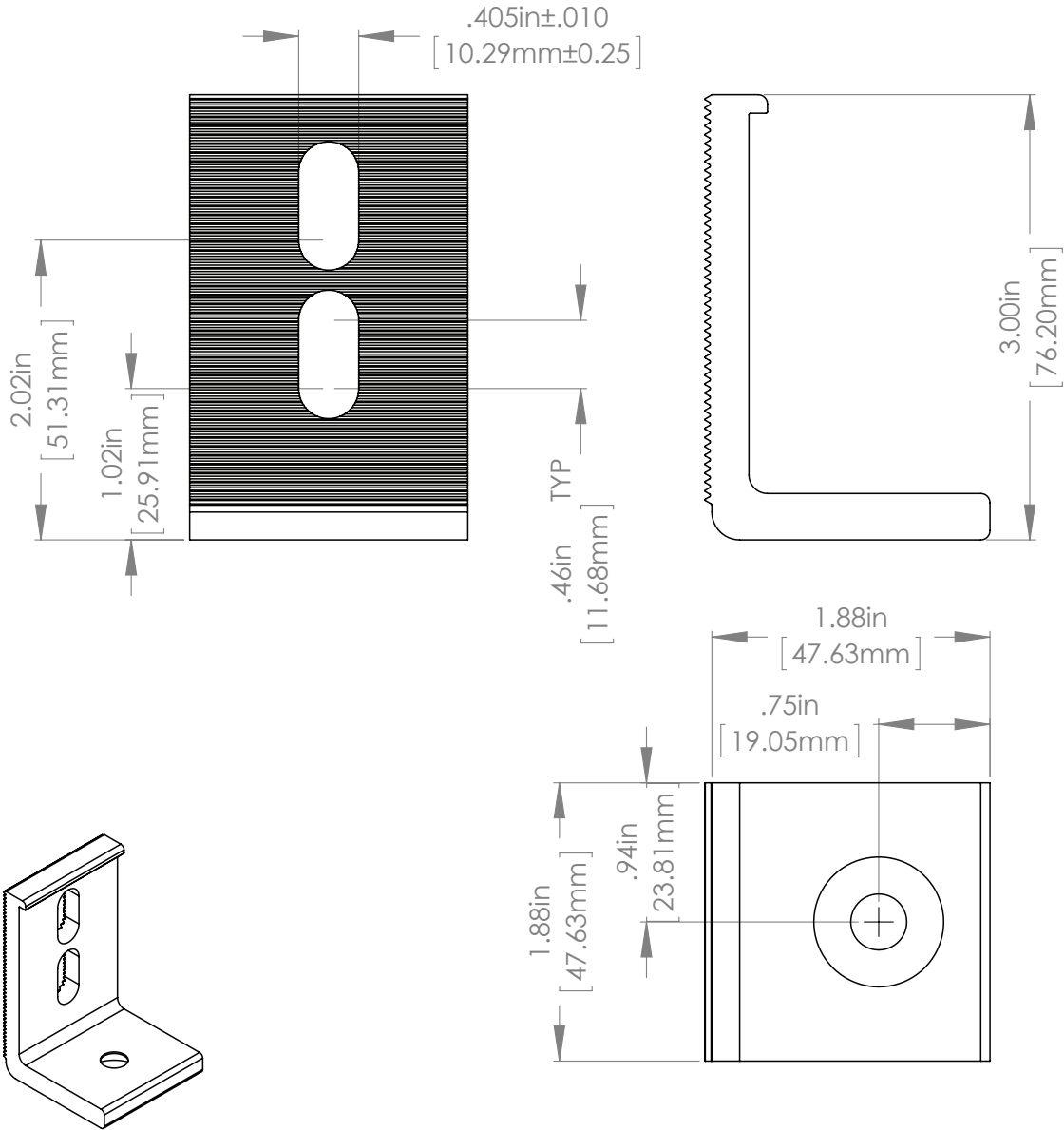


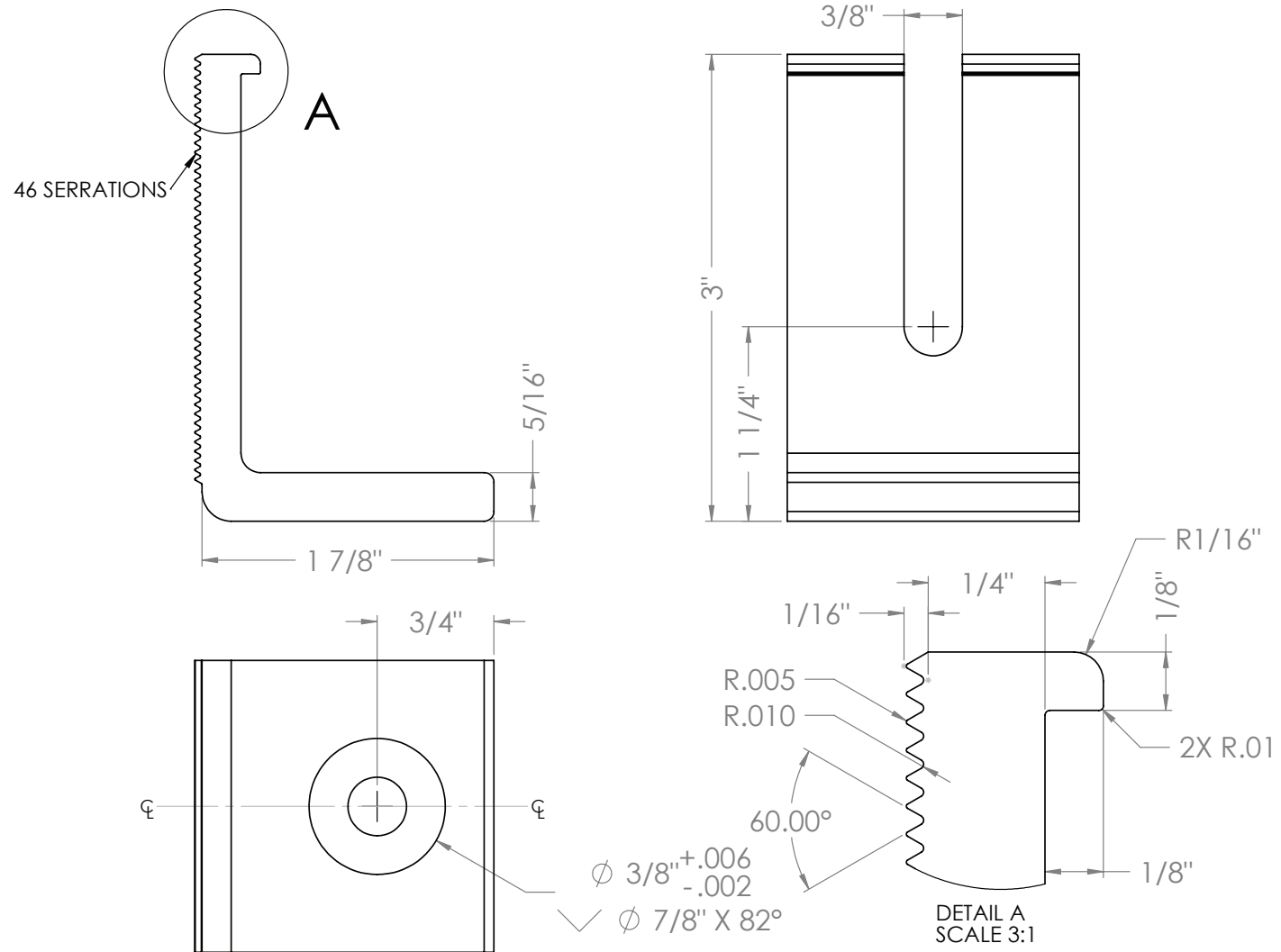




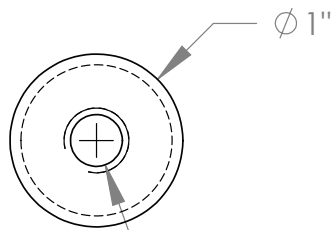






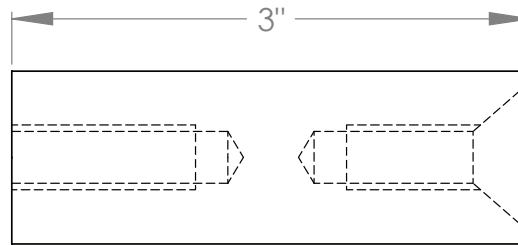


TOP VIEW

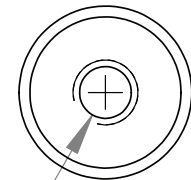


$\phi 5/16'' \nabla 1 \frac{1}{4}''$
 $3/8-16 \text{ UNC} \nabla 1 \frac{1}{16}''$

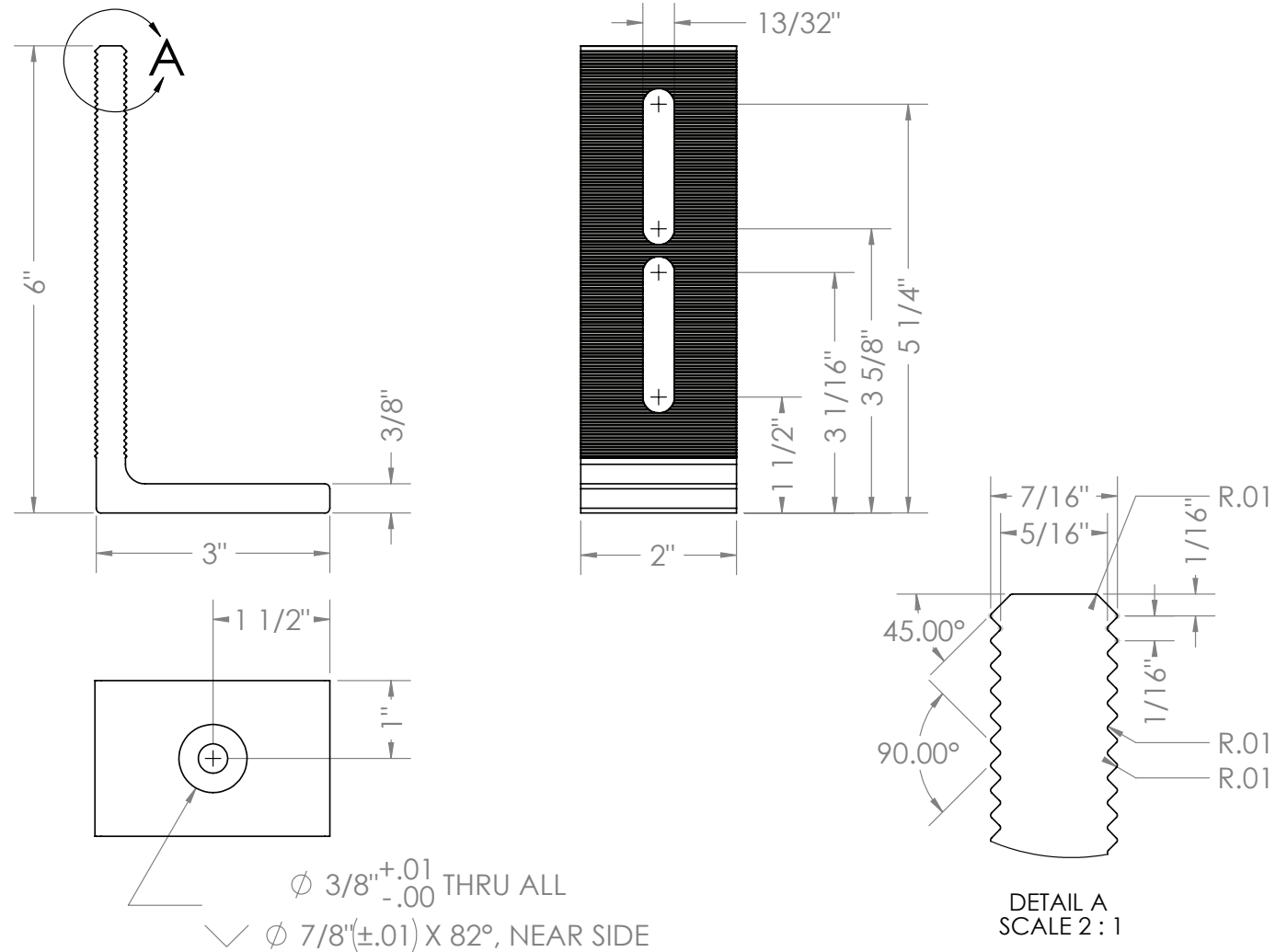
3"

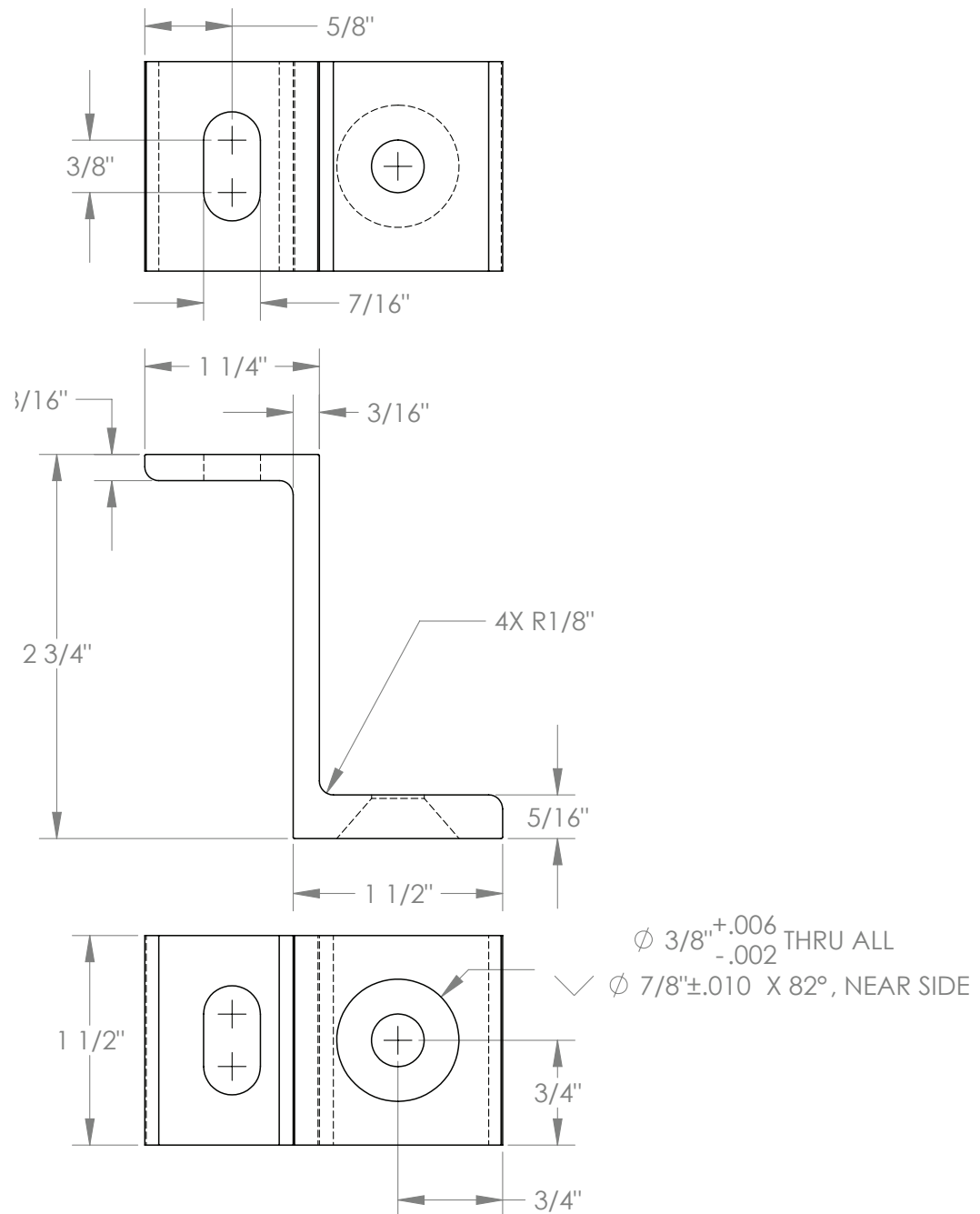


BOTTOM VIEW



$\phi 5/16'' \nabla 1 \frac{1}{4}''$
 $3/8-16 \text{ UNC} \nabla 1 \frac{1}{16}''$
 $\surd \phi 7/8'' \times 82^\circ$





PART 1 – GENERAL

1.1 SUMMARY

- A. WORK INCLUDES
 - 1. QuikFoot base plate attachment bracket that attaches directly to the roof deck.
 - 2. Provide appropriate bracket and fasteners for the roof system.
- B. RELATED SECTIONS
 - 1. Section 07600: Flashing and Sheet Metal
 - 2. Section 07500: Roofing
 - 3. Division 1: Administrative and Procedural Requirements
 - 4. Division 7: Thermal and Moisture Protection

1.2 SYSTEM DESCRIPTION

- A. COMPONENTS:
 - 1. QuikFoot system consists of aluminum bracket and base plate with (1) stainless steel stud, (1) stainless steel nut, (1) EPDM washer and (1) bonded stainless steel and EPDM washer.
 - 2. Fasteners
 - A. To be of metal compatible with QuikFoot bracket.
 - B. Fasteners should be selected for compatibility with the roof deck.
 - C. Fastener strength should exceed or be equal to that of the allowable load of the system. See test data at www.ecofastensolar.com
 - 3. Sealant (if required by roof manufacturer): to be roof manufacturer approved.
 - 4. Aluminum counter-flashing
 - 5. Aluminum attachment bracket
- B. DESIGN REQUIREMENTS:
 - 1. Bracket spacing to be recommended by project engineer.
 - 2. Install a minimum of two fasteners per base plate.
 - 3. It is important to design new structures or assess existing structures to make sure that they can withstand retained loads.

1.3 SUBMITTAL

- A. Submit manufacturer's written specifications.
- B. Submit standard product cut sheets.
- C. Submit installation instructions.
- D. Submit product specific load test data, showing ultimate and allowable load values specific to the roof deck specified for the project.

1.4 QUALITY ASSURANCE

Installer to be experienced in the installation of specified roofing material for no less than 5 years in the area of the project.

1.5 DELIVERY / STORAGE / HANDLING

Inspect material upon delivery. Notify manufacturer within 24 hours of any missing or defective items. Keep material dry, covered, and off the ground until installed.

PART 2 - PRODUCTS

2.1 MANUFACTURER

EcoFasten Solar®
289 Harrel Street, Morrisville, VT 05661
(877) 859-3947
www.ecofastensolar.com

2.2 MATERIALS

- A. Attachment Bracket
 - 6000 Series Aluminum (choose one)
 - 1. CP-SQ-Slotted
 - 2. F-111-A
 - 3. P-3-CSK
 - 4. SCL-101-3
 - 5. L-102-3"
 - 6. L-102-6"
 - 7. Z-101
 - 8. Comp Slide
 - 8. Custom

- B. Base plate is 6000 series aluminum with one PEM Type Press-In Stud 18.8 SS.
- C. Fasteners to be compatible with chosen roof application and meet specified pull out values as shown in load test data.
- D. Counter flashing is .032 gauge aluminum embossed to accept shape of stainless steel base plate

2.3 FINISH

- A. Bracket is mill finish aluminum
- B. Base flashing- Black - kynar painted

PART 3 - EXECUTION

3.1 EXAMINATION

- A. Substrate: Inspect structure on which brackets are to be installed and verify that it will withstand any additional loading that may be incurred.
- B. Notify General Contractor of any deficiencies before installing EcoFasten Solar brackets.
- C. Verify that roofing material has been installed correctly prior to installing solar attachment brackets.

3.2 INSTALLATION

- A. Comply with architectural drawings and project engineer's recommendations for location of system. Comply with Manufacturer's written installation instructions for installation and layout.

