

# CONDUIT MOUNT

**CONDUIT SUPPORT  
FOR ALL ROOF TYPES**

## INSTALLATION GUIDE

**REVISION:** 1/24/25

**VERSION:** V3.2

# CONDUIT MOUNT

## INSTALLATION GUIDE



**EcoFasten®**  
For Installers. By Installers.

*CLICKING THE PAGE NAME WILL TAKE YOU TO THAT PAGE*

[\*\*TABLE OF CONTENTS\*\*](#) [\*\*PAGE 01\*\*](#)

[\*\*FEATURES & BENEFITS\*\*](#) [\*\*PAGE 02\*\*](#)

[\*\*COMPONENTS\*\*](#) [\*\*PAGE 03\*\*](#)

[\*\*INSTALLATION\*\*](#) [\*\*PAGE 04\*\*](#)

[\*\*SPECIFICATIONS\*\*](#) [\*\*PAGE 08\*\*](#)

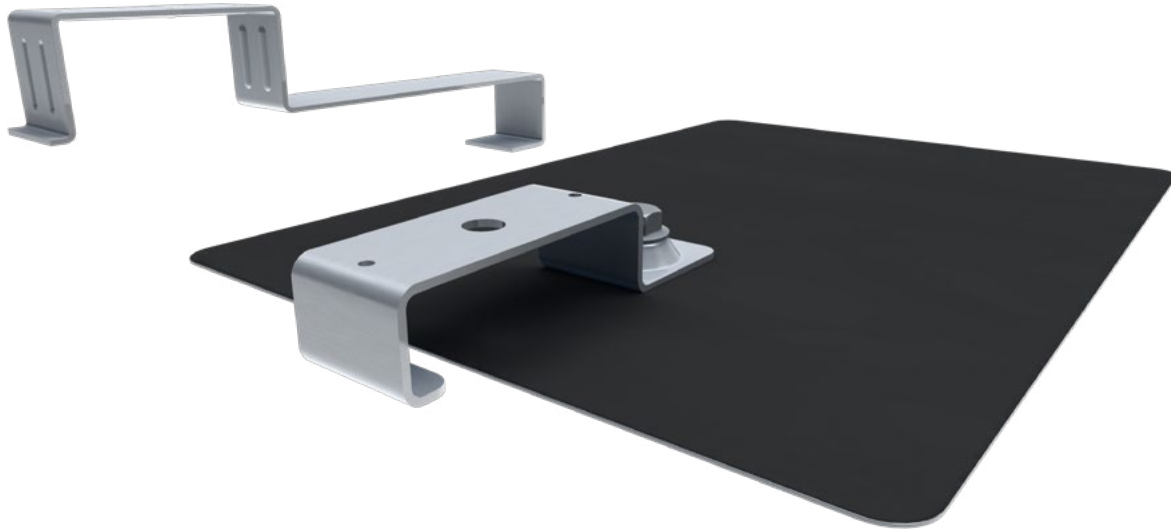
TABLE OF CONTENTS

# CONDUIT MOUNT

## INSTALLATION GUIDE



**EcoFasten®**  
For Installers. By Installers.



## CONDUIT MOUNT

The Conduit Mount Brackets can be installed onto a variety of roof types to lift electrical conduit off the roof surface, preventing wiring from overheating. The bracket features EcoFasten's patented watertight technology and can be paired with a GF-1 flashing on a new or retrofit composition shingle roof. They can also be combined with a SimpleSeal bushing for use on metal roofing.

## FEATURES

- Watertight Technology
- Mounts conduit off the surface of the roof to meet code
- Compatible with a variety of mounting systems
- Brackets can be mounted in any orientation

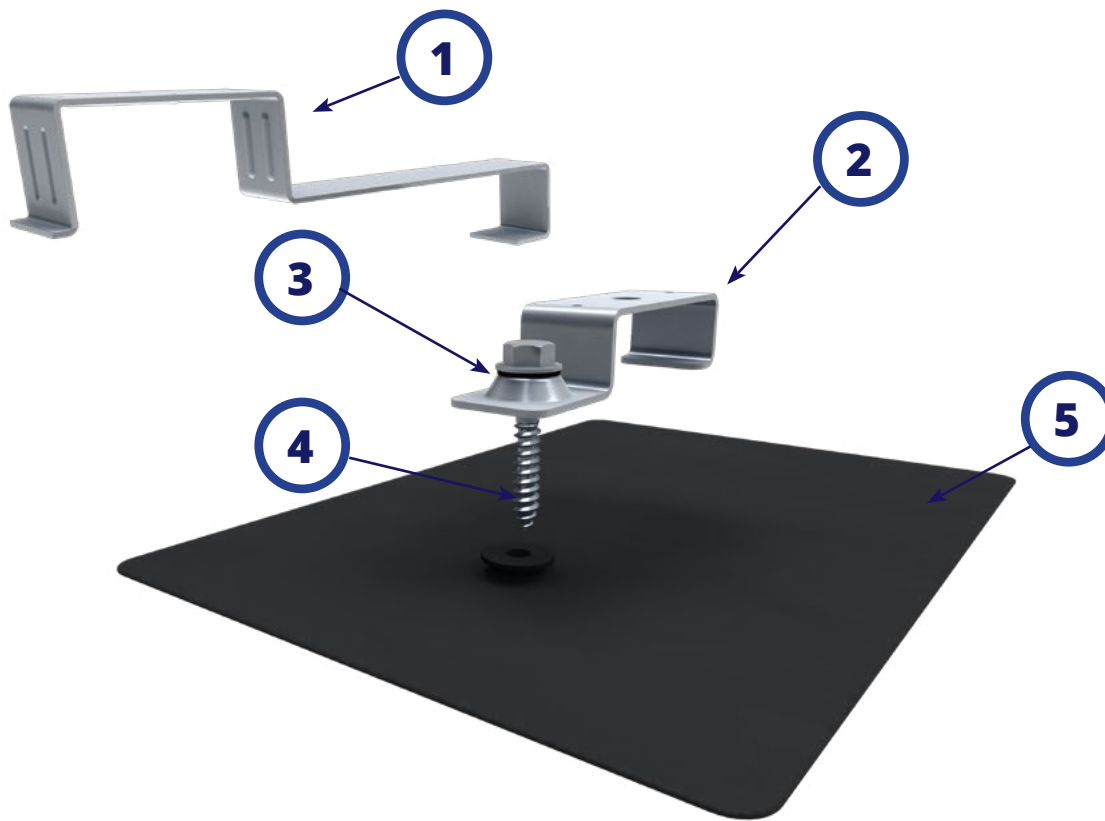
FEATURES + BENEFITS

# CONDUIT MOUNT

## INSTALLATION GUIDE



## SYSTEM COMPONENTS



**1. CONDUIT BRKT TILE MLL**  
(REQUIRES NO ADDITIONAL SYSTEM COMPONENTS)

**2. CONDUIT BRKT COMP MLL**  
(REQUIRES COMPONENTS 3, 4 & 5)

**3. 5/16" EPDM BONDED WASHER**

**4. 5/16"-2" LAG BOLT**

**5. GF-1 FLASHING WITH PRE-INSTALLED  
EPDM RUBBER GASKET**  
(AVAILABLE IN 8X10 OR 8X12, WITH BLACK FINISH  
ONLY)

COMPONENTS

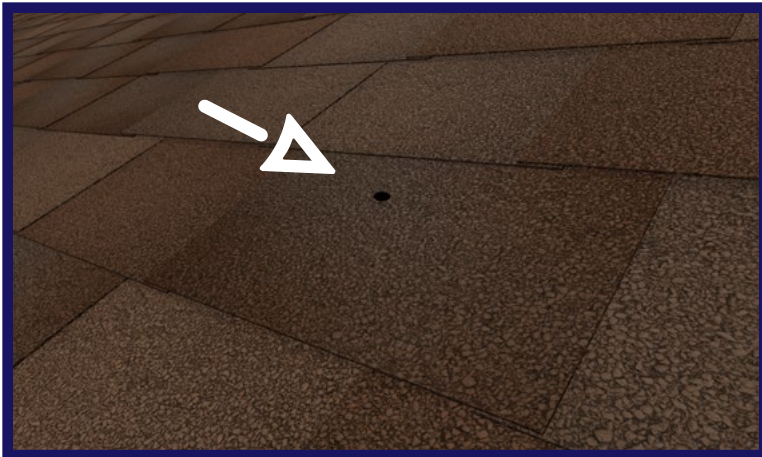
# CONDUIT MOUNT

## INSTALLATION GUIDE

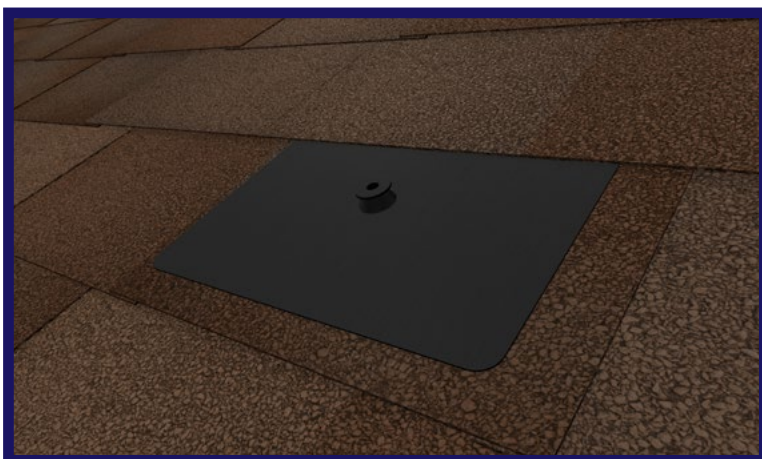


**EcoFasten®**  
For Installers. By Installers.

## INSTALLING CONDUIT MOUNT COMP



Drill a 7/32" pilot hole. Backfill with sealant compatible with the roof type.



Slide flashing up under the next row of shingles directly above the pilot hole, taking care to align the hole in the flashing with the pilot hole.

INSTALLATION



# CONDUIT MOUNT

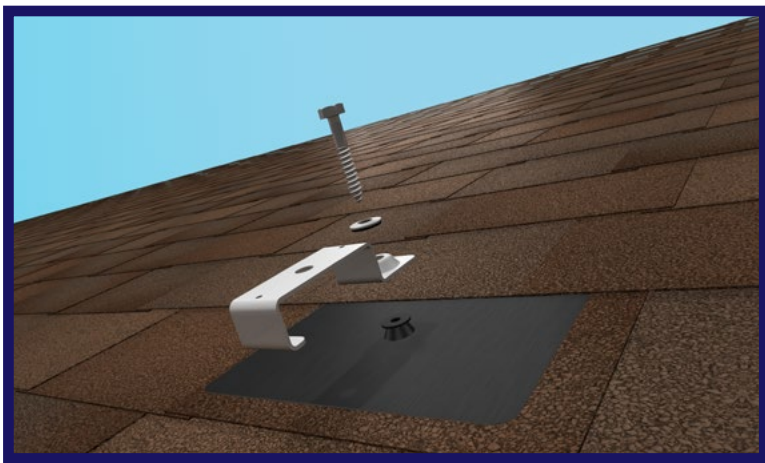
## INSTALLATION GUIDE

REVISION: 1/24/25

VERSION: V3.2

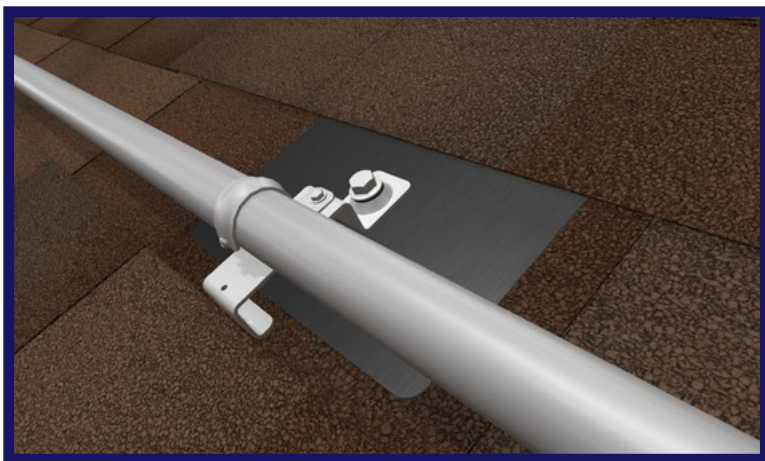


## INSTALLING CONDUIT MOUNT COMP



With the EPDM bonded washer threaded onto the lag bolt followed by the Conduit Mount Comp Bracket and then insert the lag bolt into the gasketed hole in the flashing.

The bracket can be rotated for orientation in any direction.



Drive the lag bolt down into the roof deck using an impact driver. The visual indicator for proper torque is when the EPDM on the underside of the bonded washer begins to push out the sides as the washer compresses. Do not over torque.

Install a conduit clamp (Not included) using either one of the mounting holes on the top of the bracket

INSTALLATION

# CONDUIT MOUNT

## INSTALLATION GUIDE



## INSTALLING CONDUIT MOUNT TILE



Lift up the tile above which overlaps the Tile you want to run conduit across. The tile does not need to be removed, just lifted on the front edge.



With the tile lifted to the appropriate height, slide the hook end of the Conduit Mount Tile under the tile and hook it on the tile below.

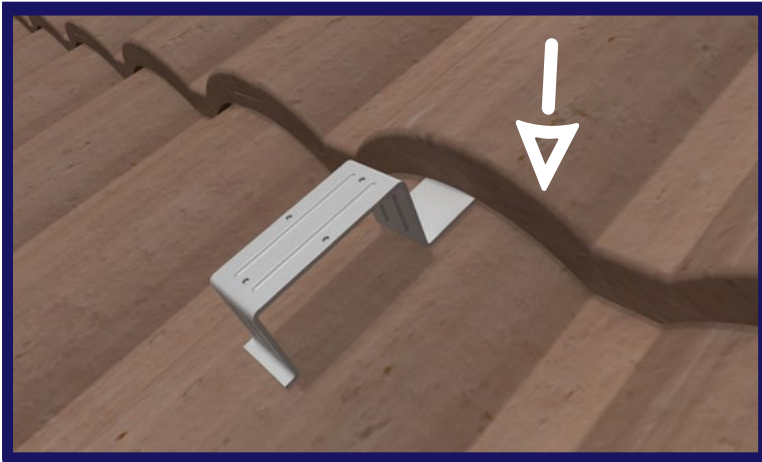
INSTALLATION

# CONDUIT MOUNT

## INSTALLATION GUIDE



## INSTALLING CONDUIT MOUNT TILE



Replace the top tile, taking care that it properly interconnects with adjacent tiles. The weight of the tile will hold the Conduit Mount Tile in place.



Install a conduit clamp (not included) using either one of the mounting holes on the top of the bracket.



# CONDUIT MOUNT

## INSTALLATION GUIDE



**EcoFasten®**  
For Installers. By Installers.

### SYSTEM COMPONENTS - CONDUIT BRKT COMP MLL

#### 1. **GF-1 Flashing:**

All flashing options come with a pre-installed integrated EPDM grommet and one bonded stainless steel EPDM washer. Flashing are available in two options:

1. 8 x 10" .032 gauge galvalume with black (kynar painted) finish.
2. 8 x 12" .032 gauge aluminum with black (kynar painted) finish.

#### 2. **Conduit Mount Comp Bracket**

Consists of (1) 5000 series aluminum Conduit Comp Bracket, (1) stainless steel 5/16"-2" hex head lag screw and (1) 5/16" EPDM bonded sealing washer.

#### 3. **Recommended Sealant:**

If required by roof manufacturer, sealant shall be roof manufacturer approved.

### SYSTEM COMPONENTS - CONDUIT BRKT TILE MLL

#### 1. **Conduit Mount Tile:**

Consists of (1) aluminum Conduit Mount Tile bracket.

### DELIVERY / STORAGE / HANDLING

Inspect material upon delivery. Notify manufacturer within 24 hours of any missing or defective items. Keep material dry, covered and off the ground until installed.

### PATENTS

# CONDUIT MOUNT

## INSTALLATION GUIDE



**EcoFasten®**  
For Installers. By Installers.

Visit [www.efpatents.com](http://www.efpatents.com) for patent information.

### DESIGN REQUIREMENTS

1. Spacing to be recommended by project engineer.
2. Fasten attachment to roof using included fastener. Conduit Mount Tile does not require a fastener, it is simply hooked onto the tile.
3. It is important to design new structures or assess existing structures to make sure they withstand retained loads.

### EXAMINATION

1. Notify General Contractor of any deficiencies before installing EcoFasten Solar brackets.
2. Verify that roofing material has been installed correctly prior to installing solar attachment bracket.

### INSTALLATION

Comply with architectural drawings and project engineer's recommendation for location of system. Comply with Manufacturer's written installation instructions for installation and layout.