

# SIMPLE BLOCK-U®

**PENETRATION-FREE STANDING  
SEAM METAL ROOF ATTACHMENT**

## INSTALLATION GUIDE

**REVISION:** 1/24/25

**VERSION:** V3.1

# SIMPLEBLOCK-U

## INSTALLATION GUIDE



**EcoFasten®**  
For Installers. By Installers.

*CLICKING THE PAGE NAME WILL TAKE YOU TO THAT PAGE*

**TABLE OF CONTENTS** **PAGE 01**

**FEATURES & BENEFITS** **PAGE 02**

**COMPATIBILITY** **PAGE 03**

**COMPONENTS** **PAGE 04**

**INSTALLATION** **PAGE 05**

**SPECIFICATIONS** **PAGE 07**

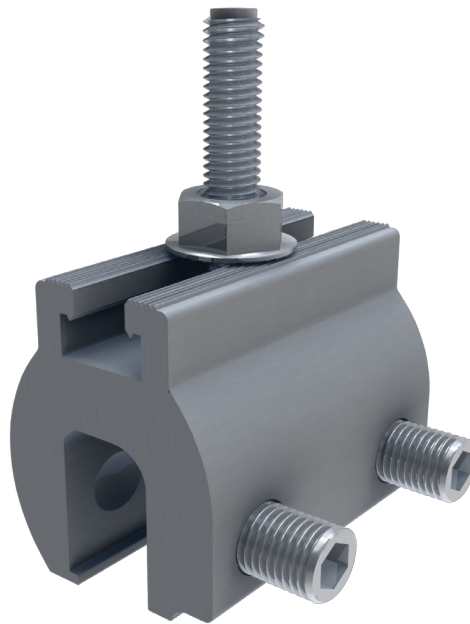
**TABLE OF CONTENTS**

# SIMPLEBLOCK-U

## INSTALLATION GUIDE



**EcoFasten®**  
For Installers. By Installers.



## SIMPLEBLOCK-U

SimpleBlock®-U has a streamlined design that offers a lightweight yet durable solution for mounting a variety of brackets to a standing seam roof. Two oval-point set screws are pre-installed, saving time on installation and eliminating the need to penetrate the roof.

## FEATURES

- Installs on vertical, double-lock standing seam profiles
- No roof penetrations required
- Open T-slot for North-South adjustability
- The technology in this product is licensed by S-5!

FEATURES + BENEFITS

# SIMPLEBLOCK-U

## INSTALLATION GUIDE

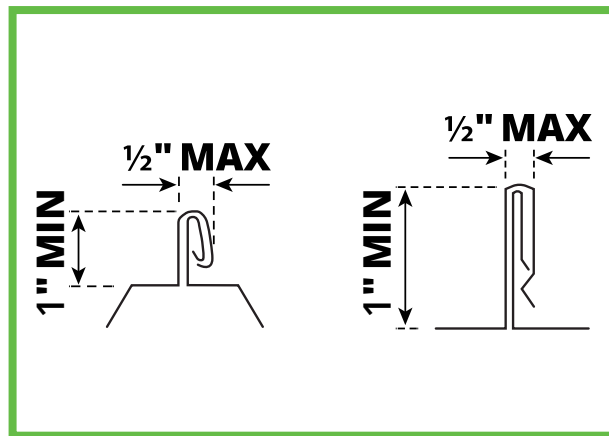
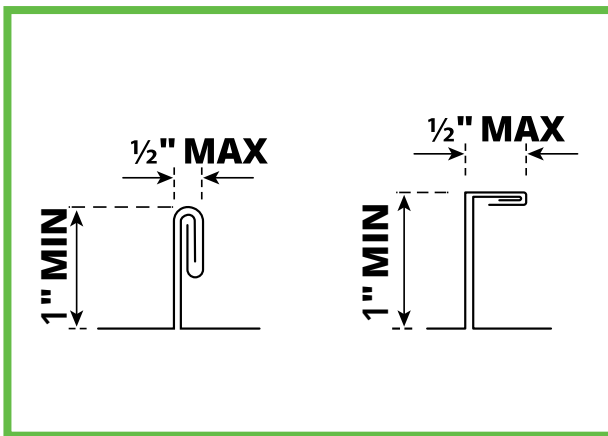


**EcoFasten®**  
For Installers. By Installers.

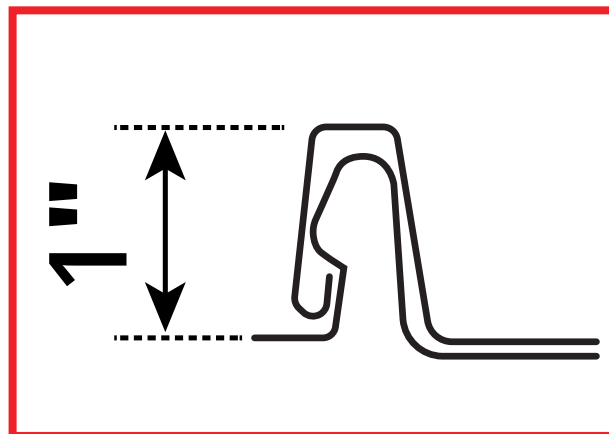
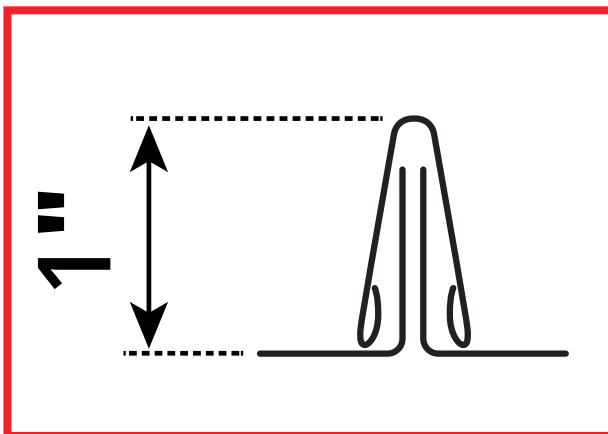
## STANDING SEAM PROFILES COMPATIBILITY

SimpleBlock-U is compatible with standing seam roofs (folding and snapping styles) with a vertical seam height of at least 1.0" and a horizontal seam width maximum of 0.5".

### ACCEPTABLE PROFILES



### UNACCEPTABLE PROFILES



COMPATIBILITY

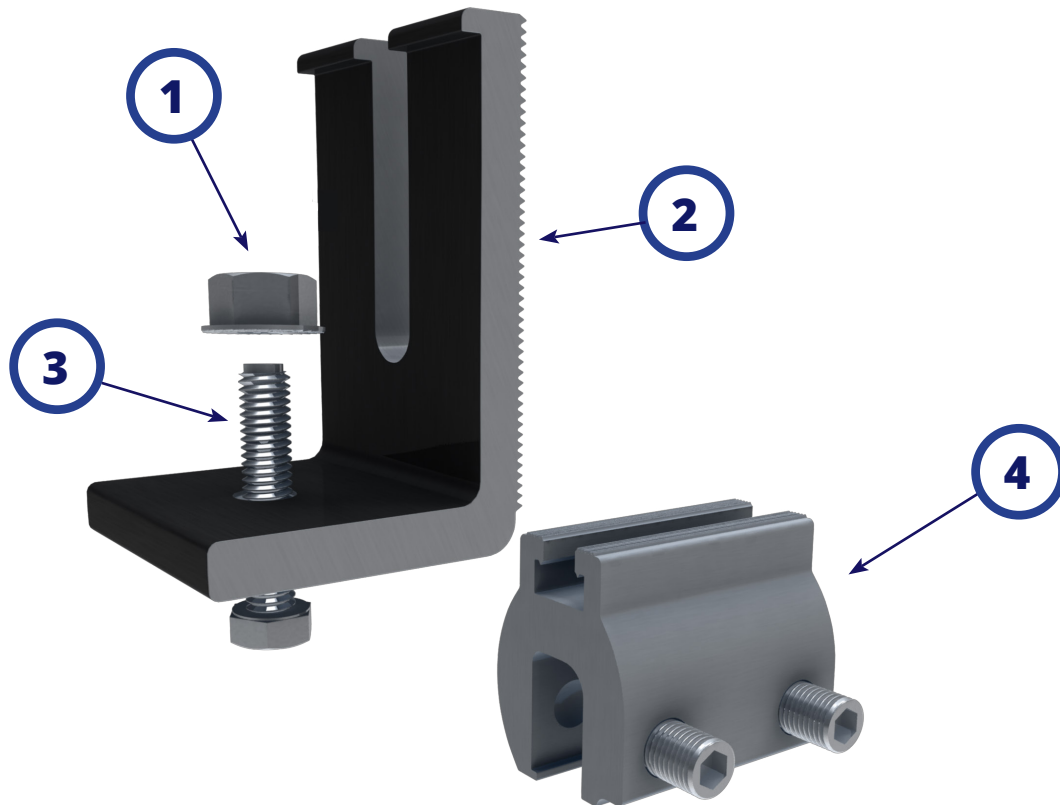
# SIMPLEBLOCK-U

## INSTALLATION GUIDE



**EcoFasten®**  
For Installers. By Installers.

## SYSTEM COMPONENTS



**1. 5/16" SERRATED FLANGE NUT**

**2. SCL-101 BLK 3"  
COMPRESSION BRACKET**

**3. 5/16-18 1" HEX BOLT**

**4. SIMPLEBLOCK-U-AL  
ASSEMBLY**

COMPONENTS

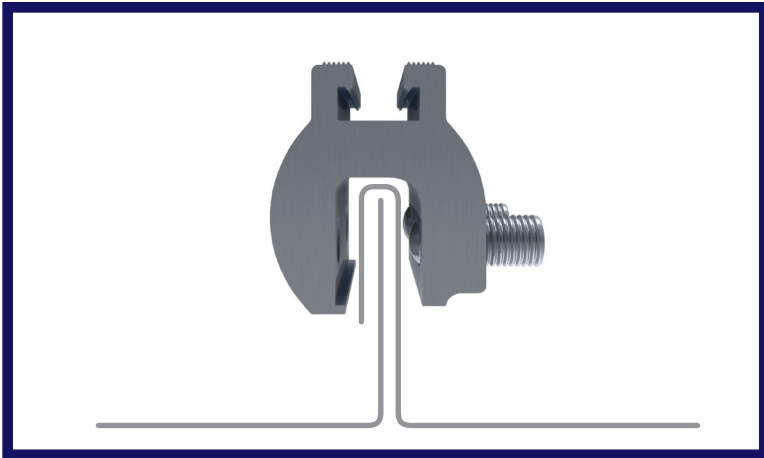
# SIMPLEBLOCK-U

## INSTALLATION GUIDE

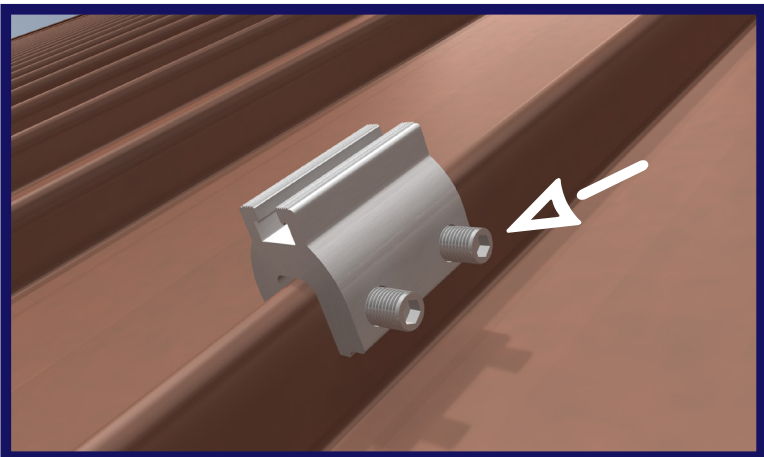


**EcoFasten®**  
For Installers. By Installers.

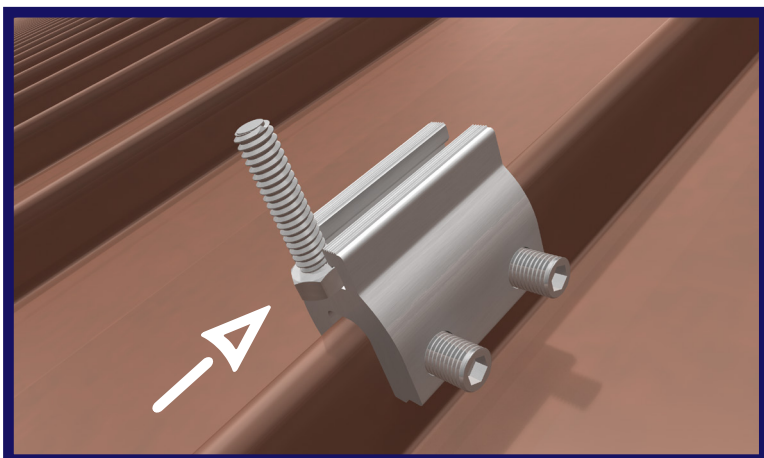
## INSTALLING SIMPLEBLOCK-U



Position SimpleBlock assembly on the panel seam. Make sure the block is fully seated on the metal seam.



Torque set screws to 150 in-lbs using included 3/16" hex drive.



Slide hex bolt into the channel on the top of the SimpleBlock-U assembly.

INSTALLATION



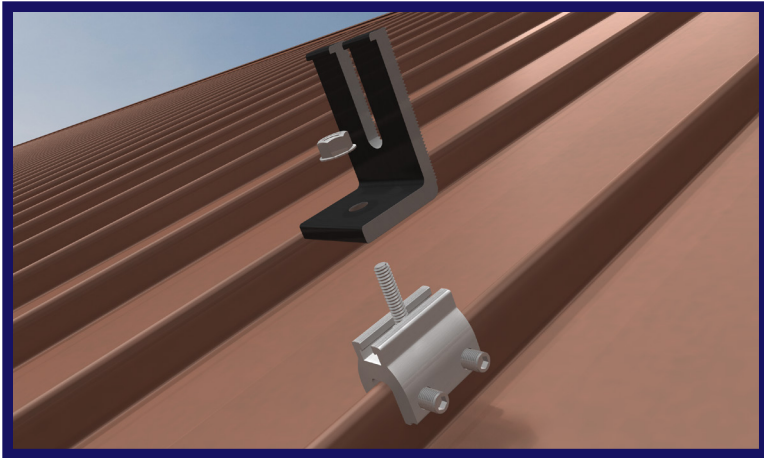
# SIMPLEBLOCK-U

## INSTALLATION GUIDE

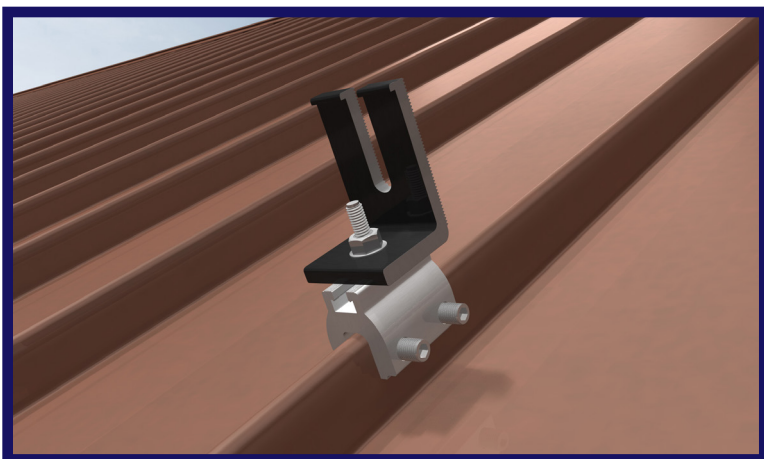


**EcoFasten®**  
For Installers. By Installers.

## INSTALLING SIMPLEBLOCK-U



Place the bracket onto the installed hex bolt followed by the serrated flange nut.



Torque flange nut to 150 in-lbs.

INSTALLATION

# SIMPLEBLOCK-U

## INSTALLATION GUIDE



**EcoFasten®**  
For Installers. By Installers.

### SYSTEM COMPONENTS

#### 1. SimpleBlock-U Mount AL

Consists of (1) aluminum SimpleBlock-U assembly with 2 preinstalled 3/8"-24 oval point set screws, (1) 5/16"-18 x 1.25" hex bolt, and (1) 5/16" stainless steel flange nut.

#### 2. Aluminum Compression Bracket:

Compatible with our 3" aluminum open slot black L-Foot.

### DELIVERY / STORAGE / HANDLING

Inspect material upon delivery. Notify manufacturer within 24 hours of any missing or defective items. Keep material dry, covered and off the ground until installed.

### PATENTS

Visit [www.efpatents.com](http://www.efpatents.com) for patent information.

### DESIGN REQUIREMENTS

1. Bracket spacing to be recommended by project engineer.
2. It is important to design new structures or assess existing structures to make sure they withstand retained loads.

### EXAMINATION

1. Substrate: Inspect structure on which brackets are to be installed and verify



# SIMPLEBLOCK-U

## INSTALLATION GUIDE



**EcoFasten®**  
For Installers. By Installers.

that it will withstand any additional loading that may be incurred.

2. Notify General Contractor of any deficiencies before installing EcoFasten Solar brackets.
3. Verify that roofing material has been installed correctly prior to installing solar attachment bracket.

### INSTALLATION

Comply with architectural drawings and project engineer's recommendation for location of system. Comply with Manufacturer's written installation instructions for installation and layout.

SPECIFICATIONS

PAGE  
**08**