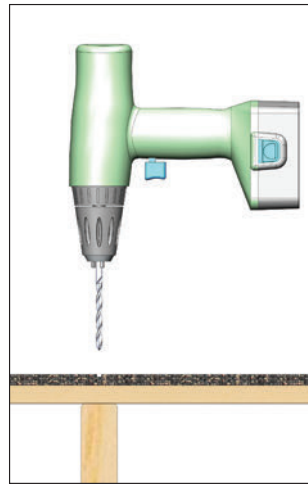


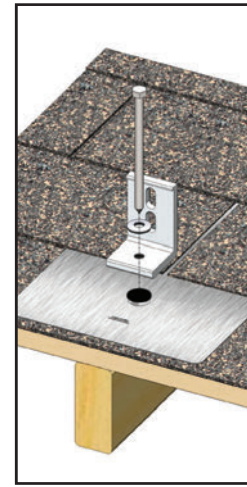
1



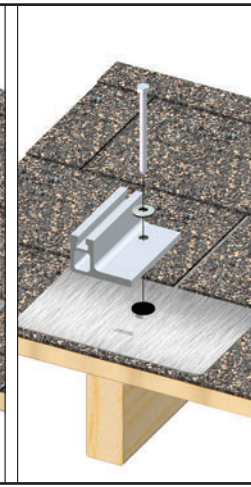
2



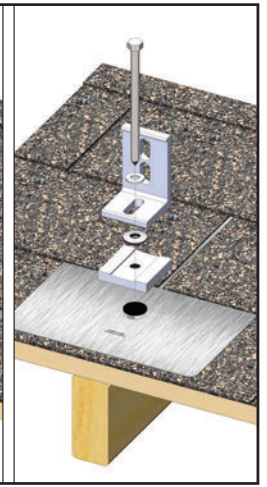
3



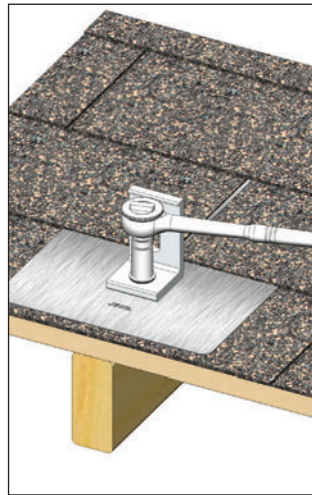
4a



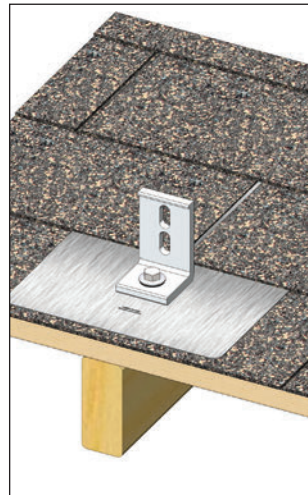
4b



4c



5



1. Locate the rafters and snap horizontal and vertical lines to mark the installation position for each GreenFasten flashing.
2. Drill a pilot hole (1/4" diameter) for the lag bolt. Backfill with sealant. EcoFasten Solar recommends an EPDM mastic.
3. Insert the flashing so the top part is under the next row of shingles and pushed far enough up slope to prevent water infiltration through vertical joint in shingles. The leading edge of flashing must butt against upper row of nails to prevent turning when torqued. See page 2.2 for vertical adjustment when leading edge of flashing hits nails in upper shingle courses.
4. Line up pilot hole with GreenFasten flashing hole.
  - 4a Insert the lag bolt through the EPDM washer, the top compression component bracket (L-102-3, Rock-It SlideComp\*, SCL-101-3\*, Z-101\*, Conduit Mount Bracket\*) and the gasketed hole in the flashing and into the rafter.
  - 4b Insert the lag bolt through the EPDM washer, the Comp Mount Slide compression bracket and the gasketed hole in the flashing and into the rafter.
  - 4c Insert the lag bolt through the SS washer, the third-party bracket, the EPDM bonded washer, the CP-SQ-Slotted compression bracket and the gasketed hole in the flashing and into the rafter.
5. Torque: The range is between 100-140 torque inch-pounds depending on the type of wood and time of year. The visual indicator for proper torque is when the EPDM on the underside of the bonded washer begins to push out the sides as the washer compresses. If using an impact wrench to install the fasteners be careful not to over torque the fastener. You may need to stop and use a ratchet to finish the install.

\*not pictured.

Consult an engineer or go to [www.ecofastensolar.com](http://www.ecofastensolar.com) for engineering data.