



## SIMPLERACK®

### RAIL-LESS RACKING FOR CONCRETE ROOFS

The rail-less SimpleRack system is engineered specifically for use in flat concrete roofing applications. The system is ideal for fast, easy fixed-positioning mounting. Simple and straight forward hardware accommodate both low & high profile mounting. SimpleRack provides integrated bonding and is UL 2703 certified.

### FEATURES & BENEFITS

- Rail-less racking that conforms to UL 2703
- 10° fixed-position mounting solution
- Integrated bonding
- Tested for 170 mph winds (Exposure D)

### SINGLE BOLT PENETRATION, FIXED-POSITION MOUNTING SYSTEM



ROOF TYPE

Flat concrete roofs



RACKING

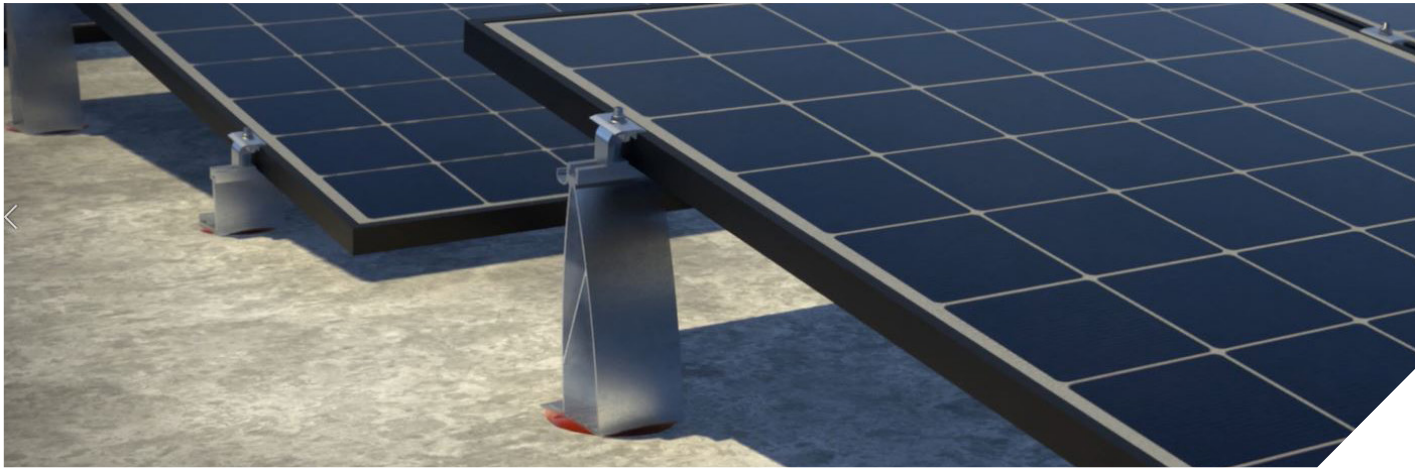
Rail-less



ATTACHMENT

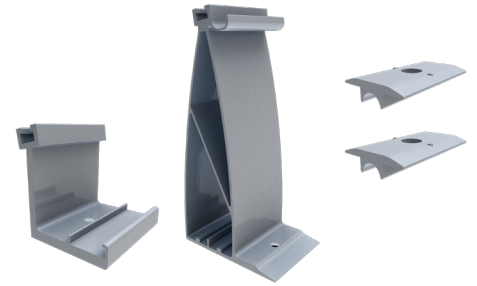
Direct attach





**SR-X LEG KIT:**

	PRODUCT IMAGE	PART NUMBER	PART DESCRIPTION	BOX QUANTITY	PALLET QUANTITY
<i>INCLUDES (1) SHORT LEG, (1) TALL LEG, (2) MIDCLAMPS, (2) FLANGE NUTS, (2) SET SCREWS &amp; (2) T-NUT MOUNTS</i>					
<b>SYSTEM</b>		<b>SR-X LEG KIT</b>	SIMPLERACK SHORT/TALL LEGS WHW	12	NOT OFFERED
<b>SPACERS</b>		<b>SR-X END 32</b>	SIMPLERACK 32MM END SPACER	50	NOT OFFERED
		<b>SR-X END 35</b>	SIMPLERACK 35MM END SPACER	50	NOT OFFERED
		<b>SR-X END 40</b>	SIMPLERACK 40MM END SPACER	50	NOT OFFERED
<i>ASSEMBLED WITH (1) CARRIAGE BOLT &amp; (1) FLANGE NUT</i>					
<b>ACCS.</b>		<b>ROCK-IT CLIP 2.0</b>	ROCK-IT CLIP 2.0 W/MLPE CLIP	300	10800



**CHOOSE YOUR SPACER:**

\* SPECIAL ORDER ITEM

