

CONDUIT MOUNT

CONDUIT SUPPORT FOR ALL ROOF TYPES

The Conduit Mount Brackets can be installed onto a variety of roof types to lift electrical conduit off the roof surface, preventing wiring from overheating. The bracket features EcoFasten's patented watertight technology and can be paired with a GF-1 flashing on a new or retrofit composition shingle roof. They can also be combined with a SimpleSeal bushing for use on metal roofing.

FEATURES & BENEFITS

- Patented Watertight Technology
- Mounts conduit off the surface of the roof
- Pipe clamp can be mounted in any orientation
- Compatible with a variety of mounting systems



All Roof Types



Rail-Based
Rail-Less

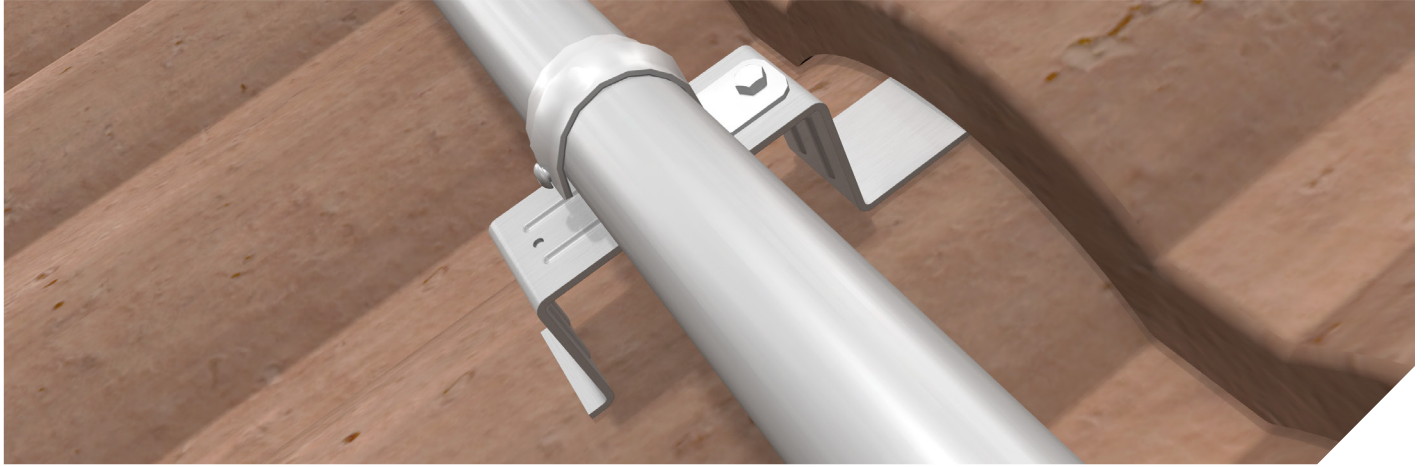


Direct-attach or
Hooks to Tile



FAST INSTALLING & CODE COMPLIANT

CONDUIT MOUNT CONDUIT SUPPORT FOR ALL ROOF TYPES

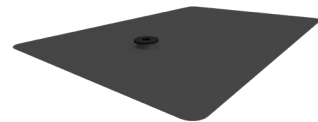


	PRODUCT IMAGE	PART NUMBER	PART DESCRIPTION	BOX QUANTITY	PALLET QUANTITY
MOUNTS	INCLUDES (1) 2" LAG BOLT AND (1) SS 8-18 X 3/4" TEK SCREW				
		3011010	CONDUIT BRKT COMP MLL	50	10350
MOUNTS	INCLUDES (1) SS 8-18 X 3/4" TEK SCREW				
		3011011	CONDUIT BRKT TILE MLL	60	4320
FLASHINGS	ASSEMBLED WITH (1) GF GROMMET AND INCLUDES (1) 5/16" EPDM BONDED WASHER				
		3012010	GF-1 FLASHING GLV BLK 8X12"	50	3000
		3012020	GF-1 FLASHING GLV BLK 8X10" (NO WASHER)	50	3600
		3012011	GF1 8X12" GALVALUME MLL FLASHING	50	3000
FLASHINGS		3012013	GF-2V FLASHING AL BLK 8X12"	50	3000
ACCESSORIES	SOLD SEPARATELY IN PACKAGES OF 50				
		3016015	SIMPLESEAL EPDM BUSHING (50)	50/10,000	80000
ACCESSORIES		3016014	EPDM BOND WASHER SS .313" (51)	50/5,000	315000

CHOOSE YOUR ROOF TYPE:

COMPOSITION SHINGLE ROOF:

COMBINE FLASHING AND CONDUIT MOUNT BRACKET



3012010
3012020
3012011
3012013

3011010



METAL ROOF:

COMBINE SIMPLE SEAL WITH CONDUIT MOUNT BRACKET



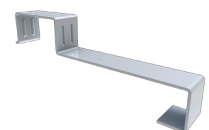
3016015

3011010



TILE ROOF:

3011011



*CONDUIT CLAMP NOT INCLUDED. COMPATIBLE WITH ALL CONDUIT CLAMPS USING INCLUDED TEK SCREWS.