

# CONDUIT MOUNTS

## AVAILABLE SYSTEM COMPONENTS

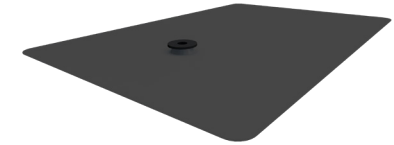
	PRODUCT IMAGE	PART NUMBER	PART DESCRIPTION	BOX QUANTITY	PALLET QUANTITY
MOUNTS	INCLUDES (1) 2" LAG BOLT AND (1) SS 8-18 X 3/4" TEK SCREW				
		3011010	CONDUIT BRKT COMP MLL	50	10350
MOUNTS	INCLUDES (1) SS 8-18 X 3/4" TEK SCREW				
		3011011	CONDUIT BRKT TILE MLL	60	4320
FLASHINGS	ASSEMBLED WITH (1) GF GROMMET AND INCLUDES (1) 5/16" EPDM BONDED WASHER				
		3012010	GF-1 FLASHING GLV BLK 8X12"	50	3600
		3012020	GF-1 FLASHING GLV BLK 8X10" (NO WASHER)	50	3200
		3012011	GF1 8X12" GALVALUME MLL FLASHING	50	3000
FLASHINGS		3012013	GF-2V FLASHING AL BLK 8X12"	50	3000
ACCESSORIES	SOLD SEPARATELY IN PACKAGES OF 50				
		3016015	SIMPLESEAL EPDM BUSHING (50)	50/10000	80000
ACCESSORIES		3016014	EPDM BOND WASHER SS .313" (51)	50/5000	315000

\*CONDUIT CLAMP NOT INCLUDED. COMPATIBLE WITH ALL CONDUIT CLAMPS USING INCLUDED TEK SCREWS.

### CHOOSE YOUR ROOF TYPE:

#### COMPOSITION SHINGLE ROOF:

COMBINE FLASHING AND CONDUITMOUNT BRACKET



3012010  
3012011  
3012013  
3012020

3011010



#### METAL ROOF:

COMBINE SIMPLE SEAL WITH CONDUIT MOUNT BRACKET



3016015



3011010

#### TILE ROOF:



3011011