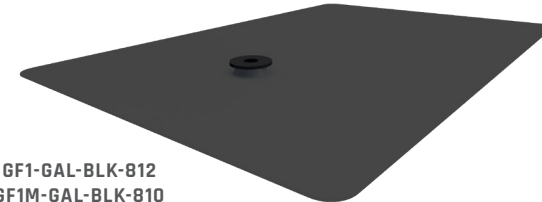


	PRODUCT IMAGE	PART NUMBER	PART DESCRIPTION	BOX QUANTITY	PALLET QUANTITY
FLASHINGS	ASSEMBLED WITH (1) GF GROMMET AND INCLUDES (1) 5/16" EPDM BONDED WASHER				
		3012010	GF-1 FLASHING GLV BLK 8X12"	50	3000
		3012020	GF-1 FLASHING GLV BLK 8X10" (NO WASHER)	50	3600
		3012011	GF1 8X12" GALVALUME MLL FLASHING	50	3000
		3012013	GF-2V FLASHING AL BLK 8X12"	50	3000
BRACKETS	INCLUDES (1) 3/8"-16 X1 1/4" HEX BOLT AND (1) 3/8"-16 FLANGE NUT FOR RACKING				
		2012022	CF UNIV L-FOOT MLL 3" (NO HARDWARE NEEDED)	50	1800
		3011018	L-FOOT SCL-101 BLK 3"	50	6000
		3011015	L-FOOT L-102 BLK 3"	50	6000
		3011017	L-FOOT SCL-101 MLL 3"	50	6000
		3011016*	L-FOOT L-102 MLL 6"	50	2400
	INCLUDES (1) 2" LAG BOLT AND (1) SS 8-18 X 3/4" TEK SCREW				
		3011010	CONDUIT BRKT COMP MLL	50	10350
	INCLUDES (1) 4" LAG SCREW AND (1) EPDM BONDED WASHER (PRE-ASSEMBLED)				
		2011013	RI COMP SLIDE AL BLK	50	3600
FASTENER		3016013	LAG SCREW SS .313X4" (50)	50/500	22500

CHOOSE YOUR FLASHING:

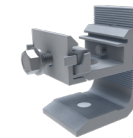


GF1-GAL-MLL-812



GF1-GAL-BLK-812
GF1M-GAL-BLK-810
GF1-BLK-812

CHOOSE YOUR BRACKET:



1500004



L-102-3-ANOD BLK



SCL-101-3
SCL-101-3 ANOD BLK



CONDUITMOUNT-BRKT
1510001



L-102-6*



SLDCOMP BLK

* SPECIAL ORDER ITEM