

# RIBFIT™

## RAIL-LESS RACKING FOR METAL R-PANEL & TRAPEZOIDAL ROOFS

RibFit is a rail-less solar mounting system designed for use on metal roofs. The RibFit system conforms to UL 2703 and consists of an aluminum slide that attaches directly to the rib. Minimal components and integrated bonding pins reduce installation times compared to rail-based systems. RibFit is compatible with most metal R-panel and trapezoidal roof panels with a ridge width of  $\frac{3}{4}$  inch or greater and 26-gauge or thicker.

## FEATURES & BENEFITS

- Four component system
- Three levels of water protection
- Utilizes self piercing screws for a quick installation
- Click-on mid and end clamps
- Conforms to UL 2703

## MOUNTS MODULES IN LANDSCAPE ORIENTATION



Metal R-Panel,  
Metal Trapezoidal



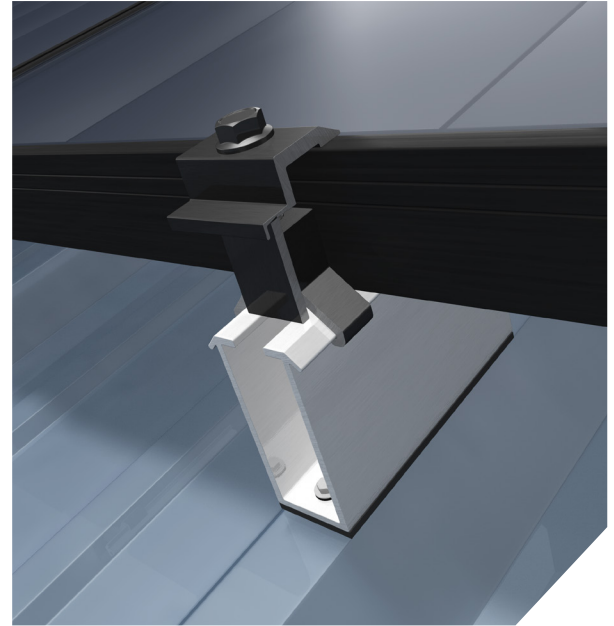
Rail-Less



Direct-Attach



	PRODUCT IMAGE	PART NUMBER	PART DESCRIPTION	BOX QUANTITY	PALLET QUANTITY
MOUNT		<b>2013010</b>	RF STEEL SLIDE AL MLL (NO HARDWARE NEEDED)	50	2400
		<b>2013011</b>	RF METAL SCREW SS #12X1" (50)	100/1000	54000
CLAMPS		<b>2099016</b>	CF/RF END CLAMP AL BLK 30MM	20	7800
		<b>2099017</b>	CF/RF END CLAMP AL BLK 32MM	50	7800
		<b>2099018</b>	CF/RF END CLAMP AL BLK 35MM	50	7800
		<b>2099019</b>	CF/RF END CLAMP AL BLK 38MM	50	7800
		<b>2099020</b>	CF/RF END CLAMP AL BLK 40MM	50	7800
		<b>2099021</b>	CF/RF END CLAMP AL BLK 45MM	50	6500
		<b>2099022</b>	CF/RF MID CLAMP AL BLK 30-40MM	50	8500
		<b>2099023</b>	CF/RF MID CLAMP AL BLK 40-50MM	50	7650
ACCESSORIES		<b>2012019</b>	CF MLPE MOUNT SS	50/400	17600
	ASSEMBLED WITH (1) CARRIAGE BOLT & (1) FLANGE NUT				
		<b>4011012</b>	FRAME MLPE MOUNT SS	50/300	12500



**RIBFIT SYSTEM**



**RIBFIT SLIDE**

Features a water-tight EPDM strip, and can be directly attaches to ridge with (2) or (4) self-piercing screws.



**END CLAMP**

Easily clicks onto the top of the RibFit Slide. Available for module widths of 30MM, 32MM, 35MM, 38MM, 40MM, 45MM, & 50MM.



**MID CLAMP**

Features integrated bonding pins and is available for module widths from 30-40MM & 40-50MM.



**THREE LEVELS OF WATER PROTECTION**

1. Mounts to rib to minimize exposure to water
2. Self-piercing screws feature EPDM gaskets for a complete seal
3. Watertight EPDM strip at the base of the slide seals the hole from the sides

