





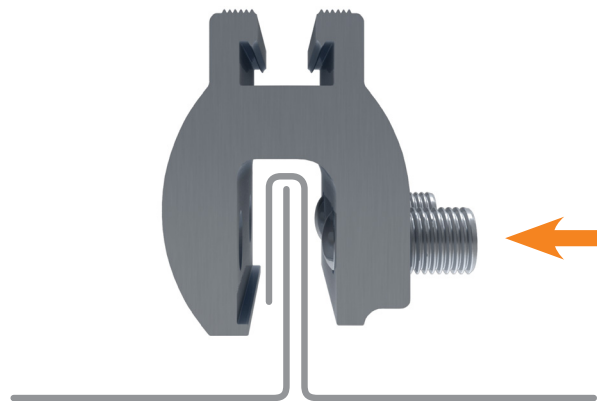


SIMPLEBLOCK-U®

AVAILABLE SYSTEM COMPONENTS

	PRODUCT IMAGE	PART NUMBER	PART DESCRIPTION	BOX QUANTITY	PALLET QUANTITY
MOUNT	ASSEMBLED WITH (2) SS SET SCREWS OP 3/8"-24X7/8", (1) SS HEX TAP BOLT 5/16"-18X1.25" AND (1) SS HEX NUT 5/16"-18				
		3014011	SIMPLEBLOCK-U MOUNT AL	50	4800
BRACKETS	INCLUDES (1) 3/8"-16 X 1 1/4" HEX BOLT AND (1) 3/8"-16 FLANGE NUT FOR RACKING				
		2012016	CF L-FOOT MLL 3" (NO HARDWARE NEEDED)	50	1800
		3011018	L-FOOT SCL-101 BLK 3"	50	6000
		3011015	L-FOOT L-102 BLK 3"	50	6000
		3011017	L-FOOT SCL-101 MLL 3"	50	6000
		3011016*	L-FOOT L-102 MLL 6"	50	2400

* SPECIAL ORDER ITEM



SimpleBlock-U fits most standing seam profiles

Pre-assembled oval-point set screws securely fasten the block to a standing seam.

SIMPLEBLOCK-U:



CHOOSE YOUR BRACKET:



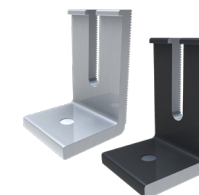
2012016



3011018



3011015*



3011017
3011016

SIMPLEBLOCK-U IS ALSO COMPATIBLE WITH THIRD-PARTY BRACKETS