

SIMPLE SEAL

WATERTIGHT SEAL FOR ECOFASTEN BRACKETS

SimpleSeal was designed for installation on most metal roofs. The system utilizes a cone-shaped EPDM rubber bushing that fits into the countersink found on the underside of any EcoFasten compression bracket. When fastened to the roof, engaging a purlin or rafter, the SimpleSeal bushing is compressed inside the bracket, creating a watertight seal.

FEATURES & BENEFITS

- Patented watertight technology
- Minimal components
- Compatible with a variety of EcoFasten compression brackets

ECONOMICAL & VERSATILE MOUNTING SOLUTION FOR METAL ROOFS



Metal



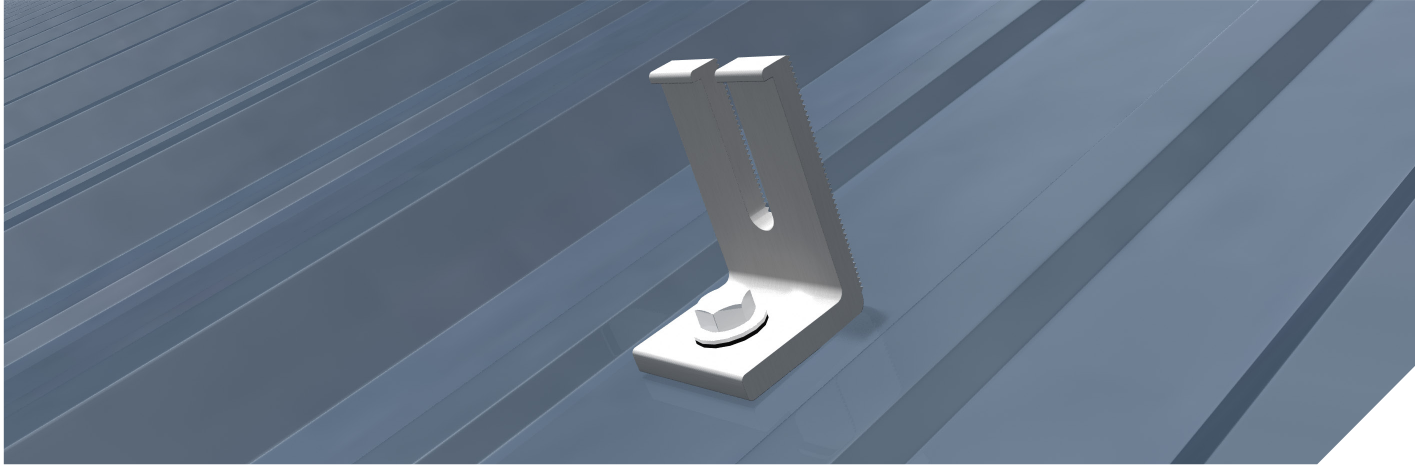
**Rail-Less
Rail-Based**



Structural-Attach



SIMPLESEAL WATERTIGHT SEAL FOR ECOFASTEN BRACKETS



	PRODUCT IMAGE	PART NUMBER	PART DESCRIPTION	BOX QUANTITY	PALLET QUANTITY	
BOTH PARTS ARE REQUIRED FOR PROPER INSTALLATION, BUT SOLD SEPARATELY IN PACKAGES OF 50						
SIMPLESEAL		3016015	SIMPLESEAL EPDM BUSHING (50)	50/10000	80000	
		3016014	EPDM BOND WASHER SS .313" (51)	50/5000	315000	
INCLUDES (1) 3/8"-16 X 1 1/4" HEX BOLT AND (1) 3/8"-16 FLANGE NUT FOR RACKING						
BRACKETS		2012022	CF UNIV L-FOOT MLL 3" (NO HARDWARE NEEDED)	50	1800	
		3011018	L-FOOT SCL-101 BLK 3"	50	6000	
		3011015	L-FOOT L-102 BLK 3"	50	6000	
		3011017	L-FOOT SCL-101 MLL 3"	50	6000	
		3011016*	L-FOOT L-102 MLL 5"	50	2400	
	INCLUDES (1) 2" LAG BOLT AND (1) SS 8-18 X 3/4" TEK SCREW					
		3011010	CONDUIT BRKT COMP MLL	50	10350	
INCLUDES (1) 4" LAG SCREW AND (1) EPDM BONDED WASHER (PRE-ASSEMBLED)						
FASTENER		2011013	RI COMP SLIDE AL BLK	50	3600	
		3016013	LAG SCREW SS .313X4" (50)	50/500	22500	

* SPECIAL ORDER ITEM

SIMPLE SEAL



3016015
3016014

CHOOSE YOUR BRACKET:



2012022

3011015

3011017
3011018

3011010

3011016*

2011013