

TILE HOOK FLASHING

STAND ALONE REPLACEMENT FLASHING FOR TILE HOOKS

Tile Hook Flashing is a standalone flashing that can be used in conjunction with our ClickFit System or other third-party tile hooks. The flashing replaces a concrete tile, so there is no need for the cutting, drilling, or grinding of tiles. The flashing comes in three shapes that are made to fit most tile profiles.

FEATURES & BENEFITS

- Compatible with the ClickFit System or third-party tile hooks
- Replaces a complete tile
- Available in Flat, S, and W-shaped tile profiles
- Sierra Tan finish blends with most roof tiles

ELIMINATES THE NEED FOR CUTTING, DRILLING, OR GRINDING TILES



Flat Tile S Tile, W Tile

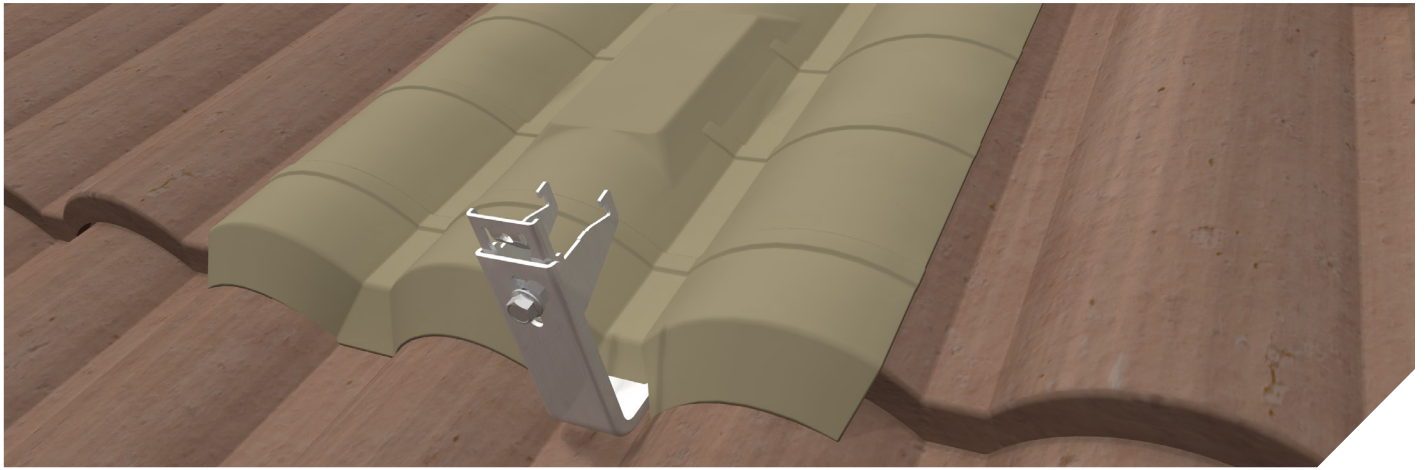


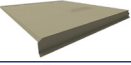
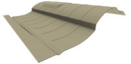
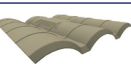



Rail-Based



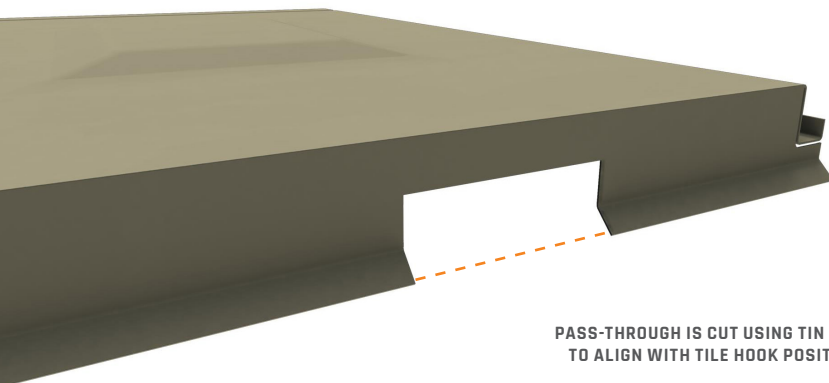
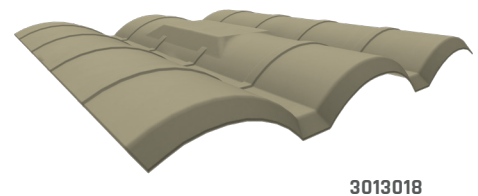
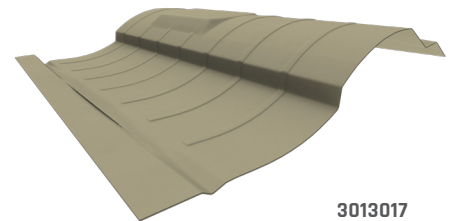
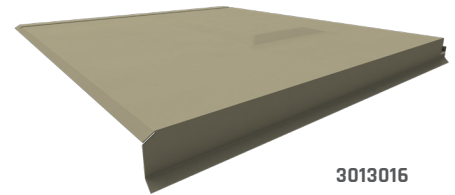
TILE HOOK FLASHING

STAND ALONE REPLACEMENT FLASHING FOR TILE HOOKS



	PRODUCT IMAGE	PART NUMBER	PART DESCRIPTION	BOX QUANTITY	PALLET QUANTITY
FLASHINGS		3013016	TILE HOOK FLASH FLAT AL ST	12	576
		3013017	TILE HOOK FLASH S AL ST	12	576
		3013018	TILE HOOK FLASH W AL ST	12	576
ACCESSORIES		2012026	CF UNIV TILE HOOK	20	480
		2012027	CF UNIV TILE HOOK SUB FLASH AL	20	2200
	INCLUDES (1) TEK SCREW (DOES NOT INCLUDE ONE HOLE PIPE STRAP & CONDUIT)				
		3011011	CONDUIT BRKT TILE MLL	60	4320

CHOOSE YOUR TILE PROFILE:



PASS-THROUGH IS CUT USING TIN SNIPS TO ALIGN WITH TILE HOOK POSITION.