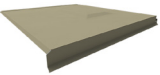
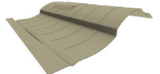
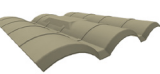



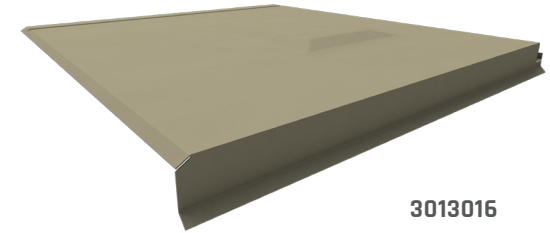


TILE HOOK FLASHING

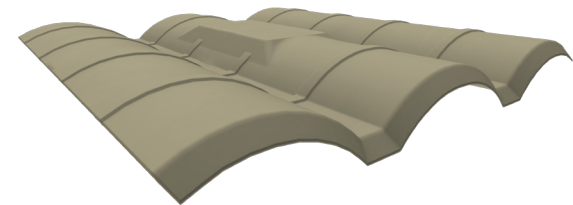
AVAILABLE SYSTEM COMPONENTS

| | PRODUCT IMAGE | PART NUMBER | PART DESCRIPTION | BOX QUANTITY | PALLET QUANTITY |
|-------------|---|-------------|--------------------------------|--------------|-----------------|
| FLASHINGS |  | 3013016 | TILE HOOK FLASH FLAT AL ST | 12 | 576 |
| |  | 3013017 | TILE HOOK FLASH S AL ST | 12 | 576 |
| |  | 3013018 | TILE HOOK FLASH W AL ST | 12 | 576 |
| ACCESSORIES |  | 2012026 | CF UNIV TILE HOOK | 20 | 480 |
| |  | 2012027 | CF UNIV TILE HOOK SUB FLASH AL | 20 | 2200 |
| | INCLUDES (1) TEK SCREW (DOES NOT INCLUDE ONE HOLE PIPE STRAP & CONDUIT) | | | | |
| |  | 3011011 | CONDUIT BRKT TILE MLL | 60 | 4320 |

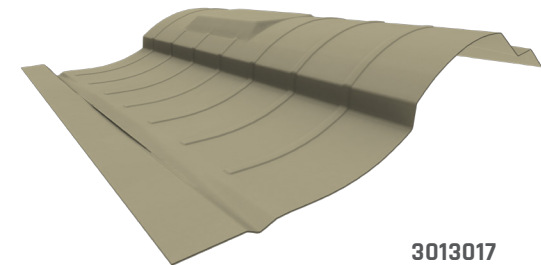
CHOOSE YOUR TILE PROFILE:



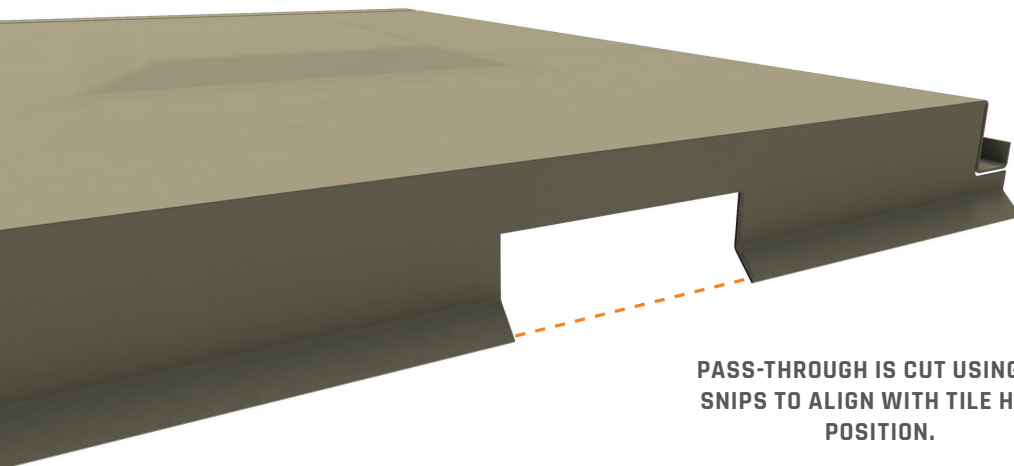
3013016



3013018



3013017



PASS-THROUGH IS CUT USING TIN SNIPS TO ALIGN WITH TILE HOOK POSITION.