

eBoS

ELECTRICAL BALANCE OF SYSTEM

EcoFasten offers a full line of electrical balance of system accessories (eBoS) that are compatible with our solar rooftop mounting systems and solar roof attachments. Successful solar installations rely on many factors coming into play including the efficiency of the PV modules, the strength and durability of the solar roof mounting systems, and the dependability of the electrical balance of system accessories used. Electrical balance of system components play an important role in the overall safety and functionality of an array.

ELECTRICAL COMPONENTS FOR OPTIMIZING PV INSTALLATIONS



Wire Mgmt,
Bonding, Conduit



Direct-Attach,
Rail-Attach





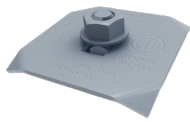
CLICKFIT WIRE CLIP

The Stainless Steel ClickFit Wire Clip clicks onto the top of the rail & accommodates 1-3 PV wires. This clip can be installed on both the north & the south side of each rail for optimum wire management.



FRAME WIRE MANAGEMENT CLIP

The Frame Wire Management Clip is a universal wire management clip that can be used with all systems. The clip mounts directly to the module frame holding PV cables, Q cables, and string cables.



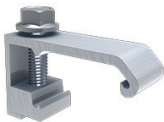
FRAME MLPE MOUNT

The Frame MLPE Mount attaches, mounts, & fully bonds Module Level Power Electronics to the module frame using a single-bolt clip. This accessory can be used with any racking system to attach the Module Level Power Electronics to the module frame.



MODULE JUMPER

The Module Jumper slides onto the frame of the PV module, bonding N-S (ClickFit) or E-W (RibFit). One Module Jumper per row or column of modules is required. Our Module Jumper can be installed quickly & easily to conform to UL 2703.



CLICKFIT MLPE MOUNT

The MLPE Mount attaches & mounts the Module Level Power Electronics to the top of the rail. The MLPE Mount was designed for use with our ClickFit system & can be placed anywhere along the rails.



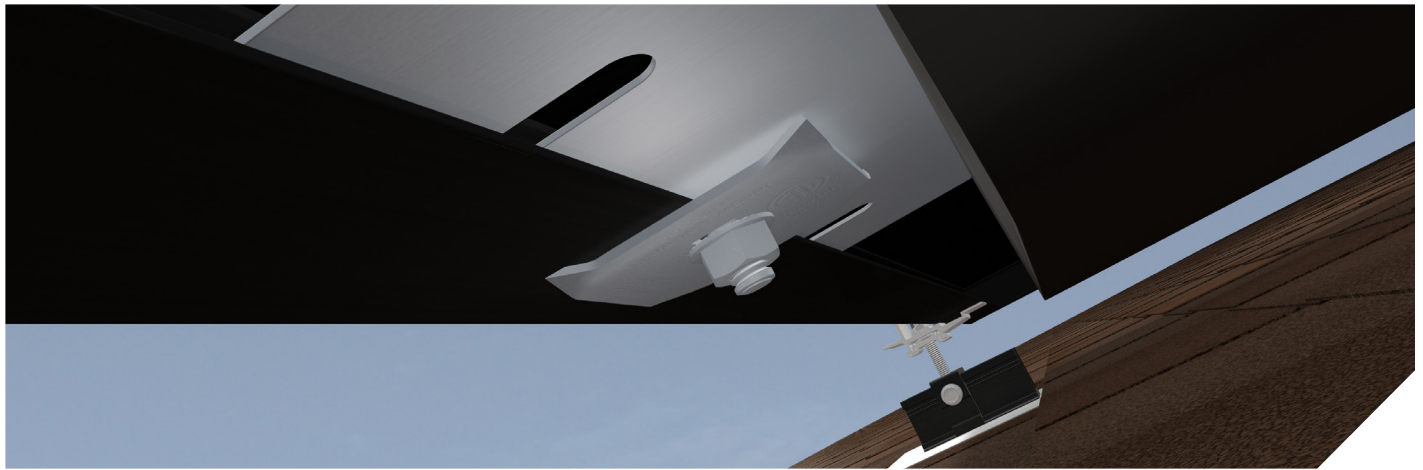
CONDUIT MOUNTS: COMP, TILE, & METAL

The Conduit Mount Brackets can be installed onto a variety of roof types to lift electrical conduit off the roof surface, preventing wiring from overheating. The bracket features EcoFasten's patented watertight technology and can be paired with a GF-1 flashing on a new or retrofit composition shingle roof. They can also be combined with a SimpleSeal bushing for use on metal roofing.



J-BOX COMP BRACKET

Our J-Box Comp Bracket functions as a standoff and base plate for all junction boxes. Combined with our GF-1 flashing, the J-Plate can raise each junction box off the roof to match different conduit support brackets. The J-Plate can be mounted directly to the deck.

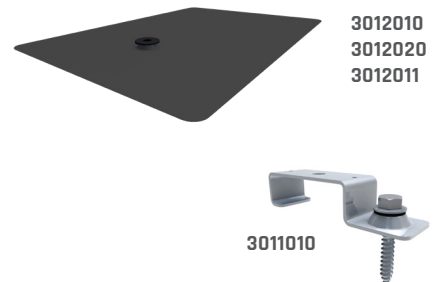


	PRODUCT IMAGE	PART NUMBER	PART DESCRIPTION	BOX QUANTITY	PALLET QUANTITY	
WIRE MANAGEMENT		2012020	CF WIRE MGMT CLIP SS	1000	TBD	
		2011017	FRAME WIRE MGMT CLIP SS	1000/4000	144000	
MLPE CLIP ASSEMBLED WITH (1) 5/8" CARRIAGE BOLT & (1) FLANGE NUT						
BONDING		4011012	FRAME MLPE MOUNT SS	50/300	12600	
		4011011	MODULE JUMPER 8"	25/1000	18000	
		2012019	CF MLPE MOUNT SS	400	17600	
COMP CONDUIT BRACKET INCLUDES (1) 2" LAG BOLT AND (1) SS 8-18 X 3/4" TEK SCREW						
CONDUIT		3011010	CONDUIT BRKT COMP MLL	50	4500	
	TILE CONDUIT BRACKET INCLUDES (1) SS 8-18 X 3/4" TEK SCREW					
		3011011	CONDUIT BRKT TILE MLL	60	3840	
		3011014	J-BOX COMP BRKT MLL	50	1800	

CONDUIT CLAMP NOT INCLUDED. COMPATIBLE WITH ALL CONDUIT CLAMPS USING INCLUDED TEK SCREWS.

CONDUIT BRACKET COMP

THE CONDUIT BRACKET COMP COMBINES WITH THE GF-1 FLASHING OF YOUR CHOICE FOR DIRECT-TO-DECK INSTALLATION ON COMPOSITION SHINGLE ROOFS.



CONDUIT BRACKET METAL

THE CONDUIT BRACKET METAL COMBINES WITH THE SIMPLE SEAL EPDM BUSHING FOR DIRECT-TO-DECK INSTALLATION ON METAL ROOFS.

