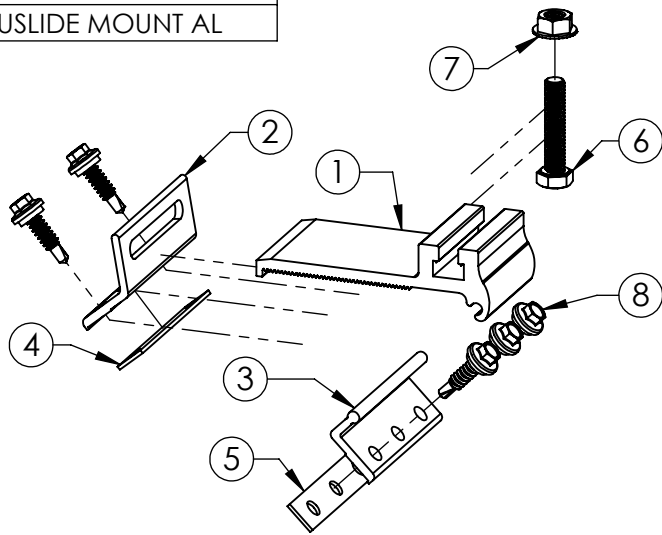


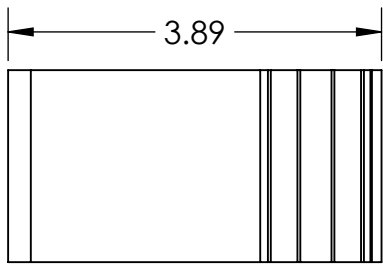
CORRUSLIDE MOUNT AL

PART NUMBER	DESCRIPTION
3014010	CORRUSLIDE MOUNT AL

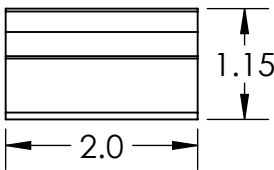
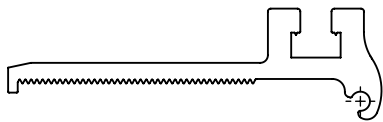


ITEM NO.	DESCRIPTION
1	CORRUSLIDE-TOP-LONG
2	SLOT BRACKET-SIMPLIFIED MACHINING OPERATION
3	CORRUSLIDE-FLIPPER MACHINING OPERATION
4	EPDM GASKET SEAL
5	EPDM GASKET SEAL CORRUSLIDE FLIPPER
6	SS HEX HD CAP SCREW, FULL THREAD, 5/16-18UNC X 1.50 LONG
7	SS SERRATED FLANGE LOCK NUT, 5/16-18
8	1/4\"-14 X 7/8\" DP1/LAP W/VRT BLAZER STAINLESS CAP HEAD W/ SEALING WASHER

1) CORRUSLIDE-TOP-LONG

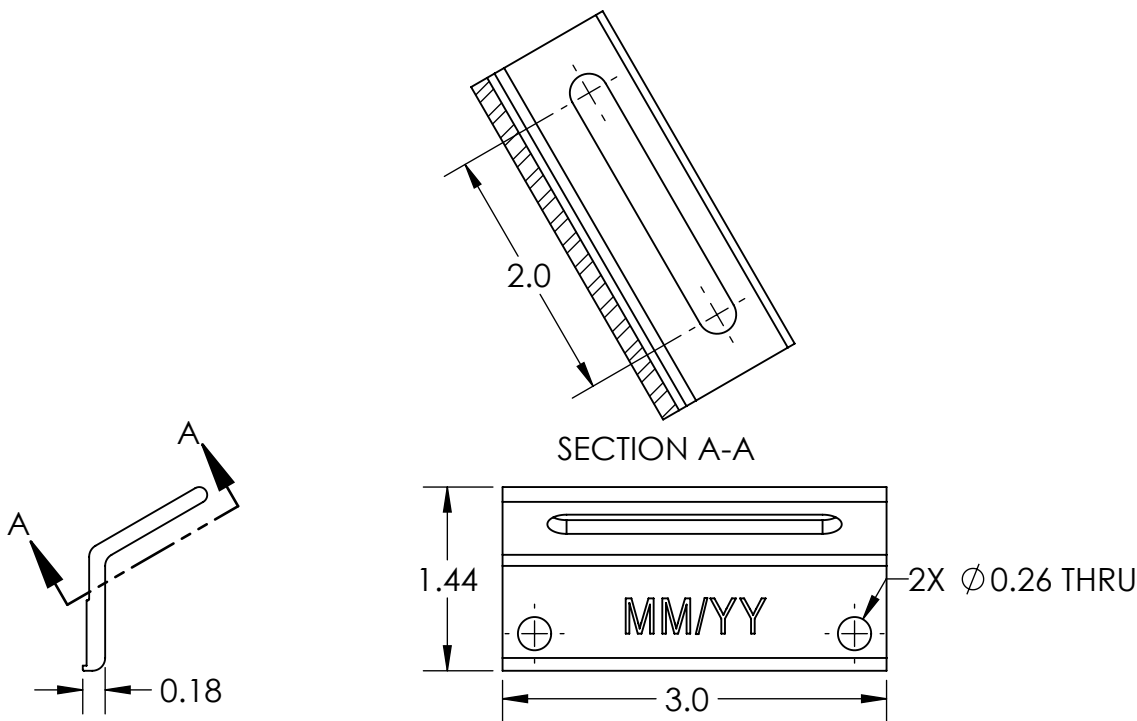


Material	Aluminum
Finish	Mill



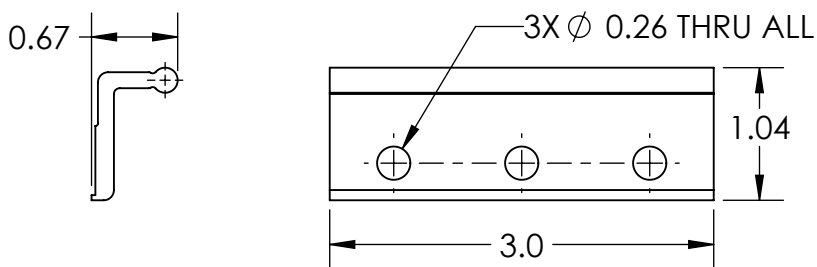
CORRUSLIDE MOUNT AL

2) SLOT BRACKET-SIMPLIFIED MACHINING OPERATION



Material	Aluminum
Finish	Mill

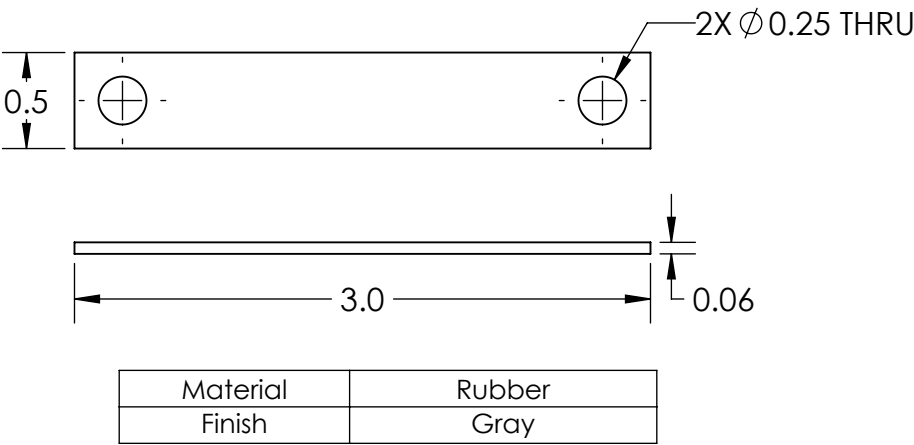
3) CORRUSLIDE-FLIPPER MACHINING OPERATION



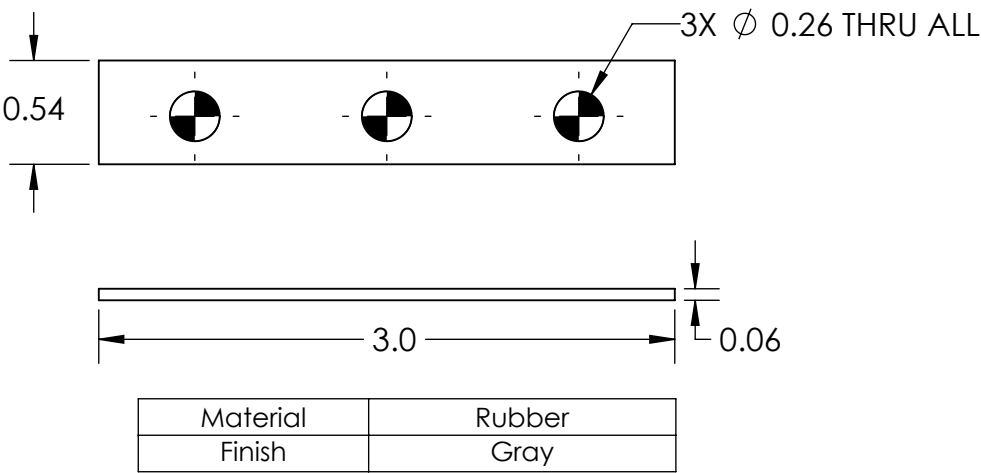
Material	Aluminum
Finish	Mill

CORRUSLIDE MOUNT AL

4) EPDM GASKET SEAL

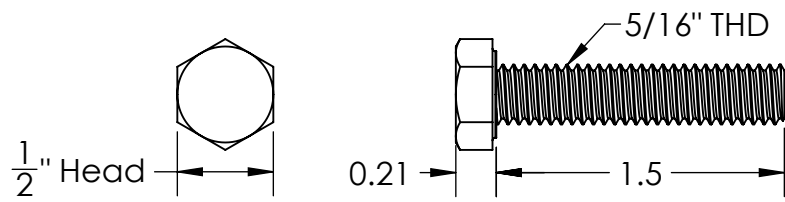


5) EPDM GASKET SEAL CORRUSLIDE FLIPPER



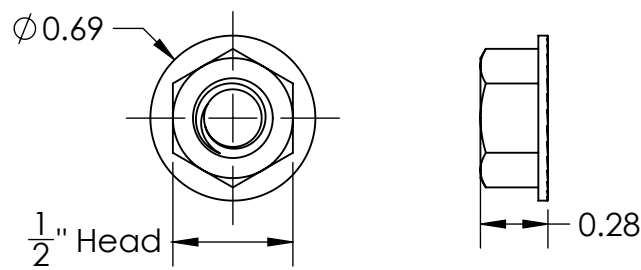
CORRUSLIDE MOUNT AL

6) SS HEX HD CAP SCREW, FULL THREAD, 5/16-18UNC X 1.50 LONG



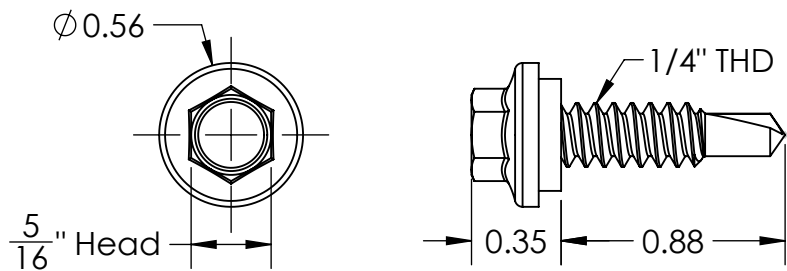
Material	Stainless Steel
Finish	Mill

7) SS SERRATED FLANGE LOCK NUT, 5/16-18



Material	Stainless Steel
Finish	Mill

8) 1/4"-14 X 7/8" DP1/LAP W/VRT BLAZER STAINLESS CAP HEAD W/ SEALING WASHER



Material	Stainless Steel
Finish	Mill