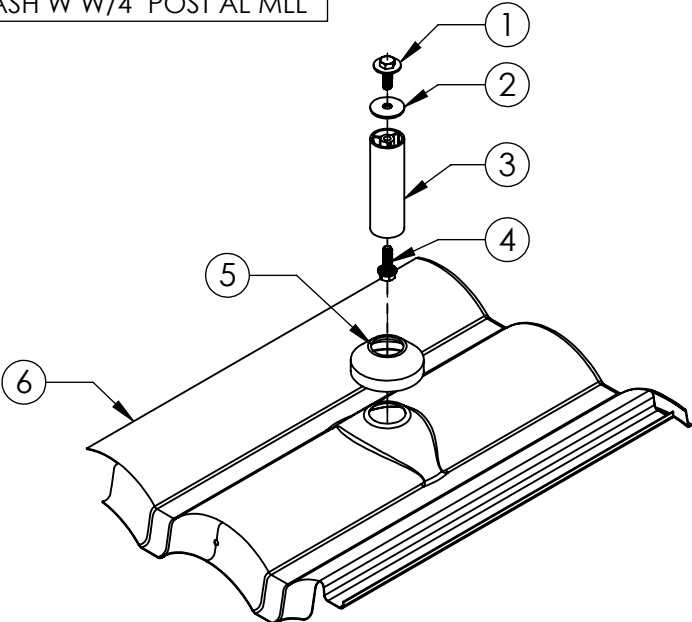


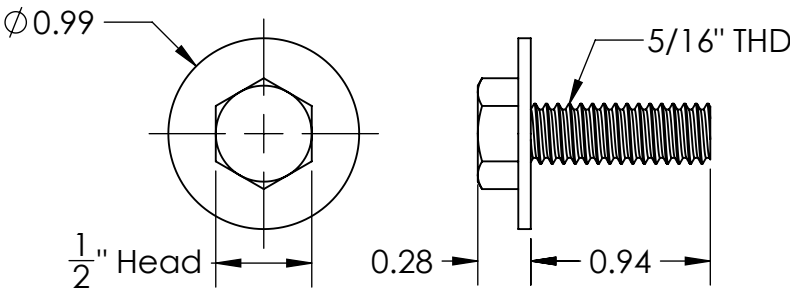
TR FLASH W W/4" POST AL MLL

PART NUMBER	DESCRIPTION
3013022	TR FLASH W W/4" POST AL MLL



ITEM NO.	DESCRIPTION
1	CAP SCREW, 5/16"-18 X 1" UNC-2A, NYLON PATCH, W/ CAPTIVE WASHER, 1"OD
2	WASHER, SEALING, 5/16" ID X 1-1/4" OD, EPDM BONDED SS
3	POST, HOLLOW, 1-1/4"OD X 4". MILL
4	CAP SCREW, SERRATED FLANGE, HEX HEAD, 5/16"-18 X 1" UNC-2A, MAGNI 525
5	COLLAR, COUNTER FLASHING, 1-1/4" ID
6	FLASHING, REPLACEMENT TILE, W-TILE, .625" CONE, MILL

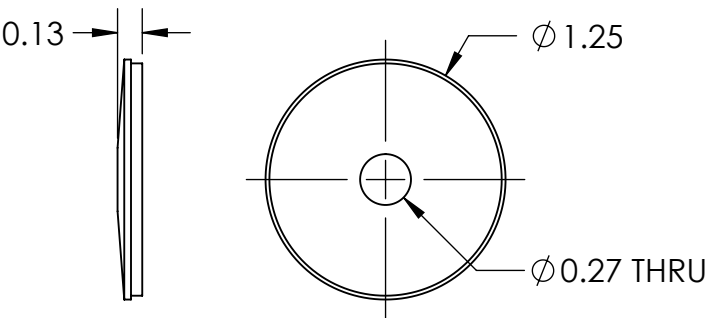
1) CAP SCREW, 5/16"-18 X 1" UNC-2A, NYLON PATCH, W/ CAPTIVE WASHER, 1"OD



Material	Stainless Steel
Finish	Mill

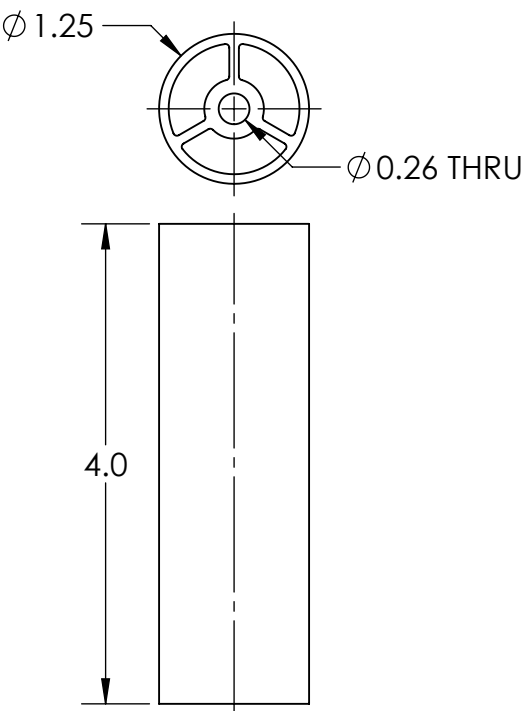
TR FLASH W W/4" POST AL MLL

2) WASHER, SEALING, 5/16" ID X 1-1/4" OD, EPDM BONDED SS



Material	Stainless Steel/EPDM
Finish	Mill

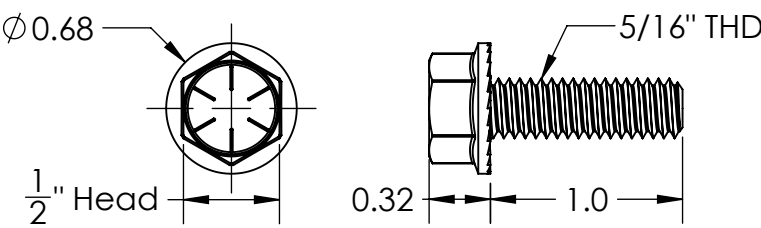
3) POST, HOLLOW, 1-1/4"OD X 4". MILL



Material	Aluminum
Finish	Mill

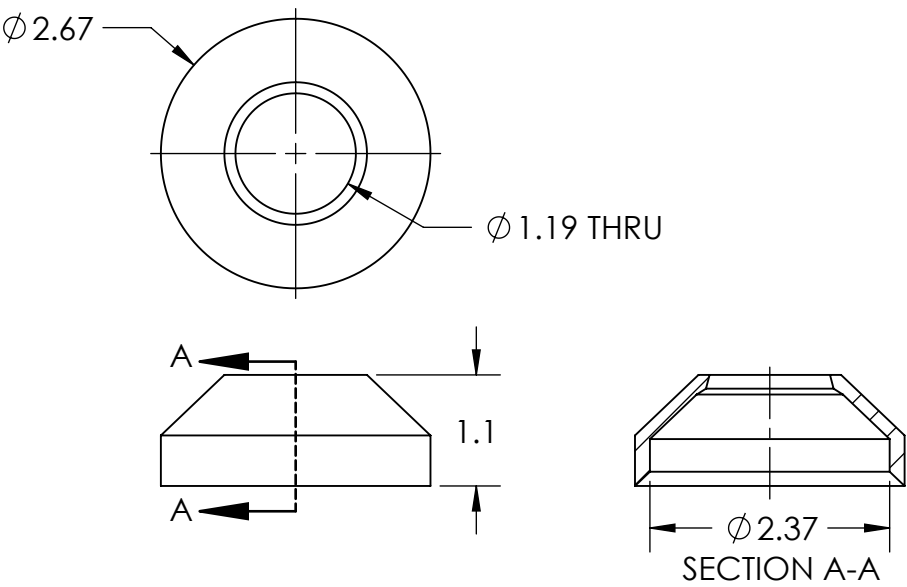
TR FLASH W W/4" POST AL MLL

4) CAP SCREW, SERRATED FLANGE, HEX HEAD, 5/16"-18 X 1" UNC-2A, MAGNI 525



Material	Steel
Finish	Mill

5) COLLAR, COUNTER FLASHING, 1-1/4" ID



Material	EPDM
Finish	Black

TR FLASH W W/4" POST AL MLL

6) FLASHING, REPLACEMENT TILE, W-TILE, .625" CONE, MILL

