

CONDUIT MOUNT

**CONDUIT SUPPORT
FOR ALL ROOF TYPES**

INSTALLATION GUIDE

REVISION: 2/12/24

VERSION: V3.1

CONDUIT MOUNT

INSTALLATION GUIDE



EcoFasten®
For Installers. By Installers.

CLICKING THE PAGE NAME WILL TAKE YOU TO THAT PAGE

TABLE OF CONTENTS **PAGE 01**

FEATURES & BENEFITS **PAGE 02**

COMPONENTS **PAGE 03**

INSTALLATION **PAGE 04**

LINE DRAWINGS **PAGE 08**

SPECIFICATIONS **PAGE 15**

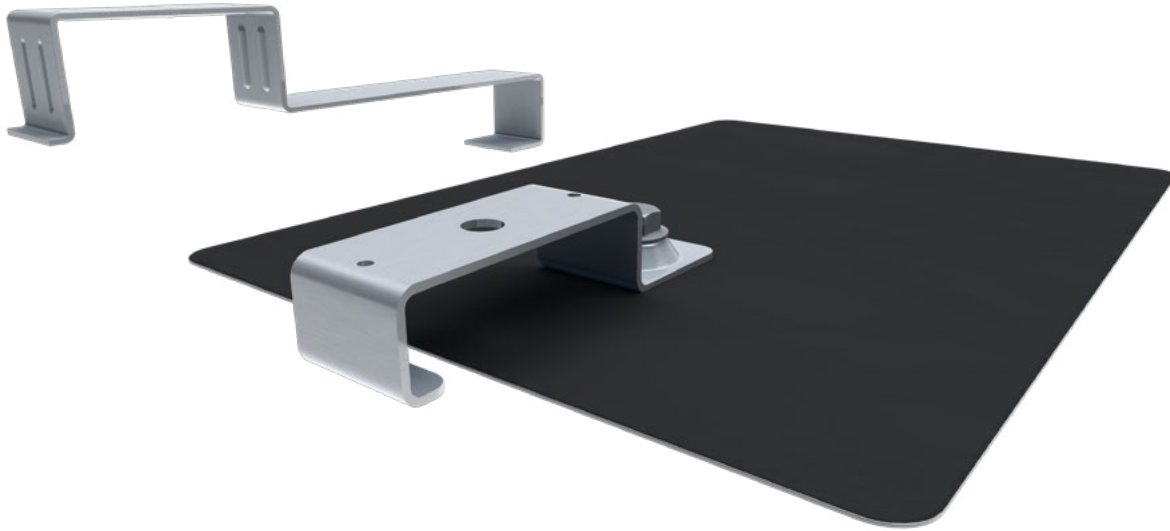
TABLE OF CONTENTS

CONDUIT MOUNT

INSTALLATION GUIDE



EcoFasten®
For Installers. By Installers.



CONDUIT MOUNT

The Conduit Mount Brackets can be installed onto a variety of roof types to lift electrical conduit off the roof surface, preventing wiring from overheating. The bracket features EcoFasten's patented watertight technology and can be paired with a GF-1 flashing on a new or retrofit composition shingle roof. They can also be combined with a SimpleSeal bushing for use on metal roofing.

FEATURES

- Watertight Technology
- Mounts conduit off the surface of the roof to meet code
- Compatible with a variety of mounting systems
- Brackets can be mounted in any orientation

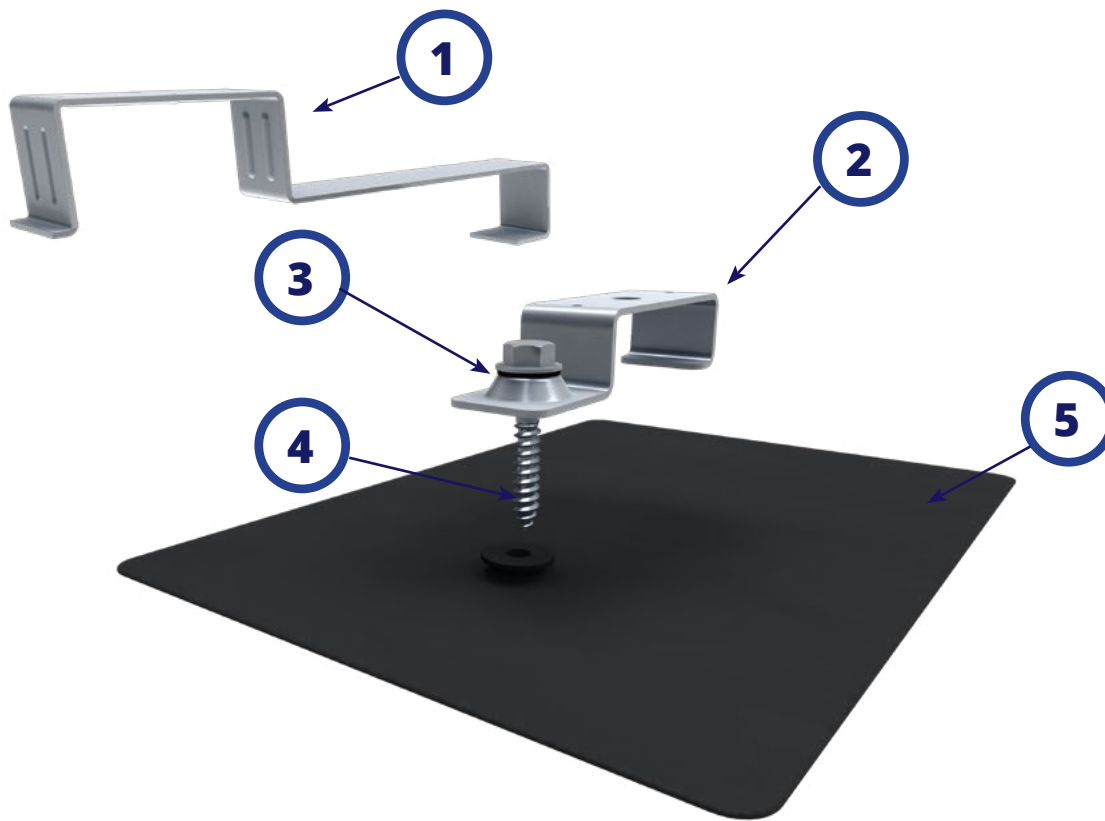
FEATURES + BENEFITS

CONDUIT MOUNT

INSTALLATION GUIDE



SYSTEM COMPONENTS



1. CONDUIT BRKT TILE MLL
(REQUIRES NO ADDITIONAL SYSTEM COMPONENTS)

2. CONDUIT BRKT COMP MLL
(REQUIRES COMPONENTS 3, 4 & 5)

3. 5/16" EPDM BONDED WASHER

4. 5/16"-2" LAG BOLT

**5. GF-1 FLASHING WITH PRE-INSTALLED
EPDM RUBBER GASKET**
(AVAILABLE IN 8X10 OR 8X12, WITH BLACK FINISH
ONLY)

COMPONENTS

CONDUIT MOUNT

INSTALLATION GUIDE

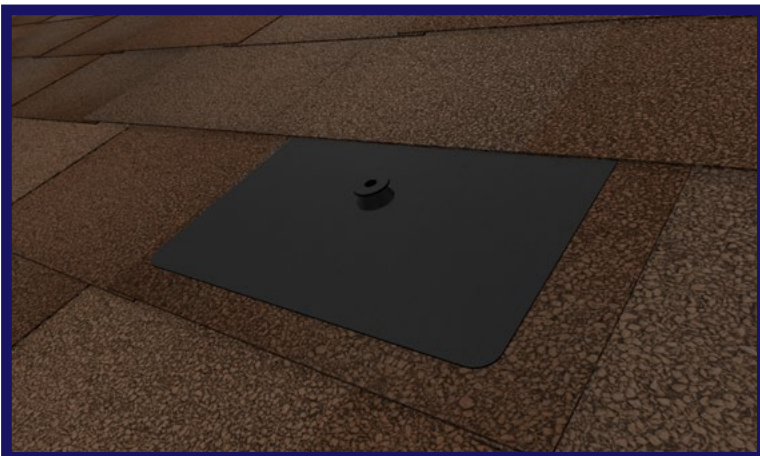


EcoFasten®
For Installers. By Installers.

INSTALLING CONDUIT MOUNT COMP



Drill a 7/32" pilot hole. Backfill with sealant compatible with the roof type.



Slide flashing up under the next row of shingles directly above the pilot hole, taking care to align the hole in the flashing with the pilot hole.

INSTALLATION

CONDUIT MOUNT

INSTALLATION GUIDE

REVISION: 2/12/24

VERSION: V3.1

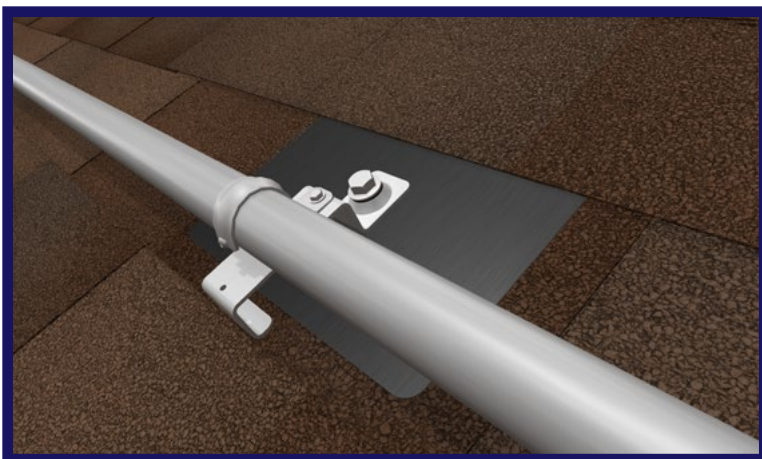


INSTALLING CONDUIT MOUNT COMP



With the EPDM bonded washer threaded onto the lag bolt followed by the Conduit Mount Comp Bracket and then insert the lag bolt into the gasketed hole in the flashing.

The bracket can be rotated for orientation in any direction.



Drive the lag bolt down into the roof deck using an impact driver. The visual indicator for proper torque is when the EPDM on the underside of the bonded washer begins to push out the sides as the washer compresses. Do not over torque.

Install a conduit clamp (Not included) using either one of the mounting holes on the top of the bracket

INSTALLATION

CONDUIT MOUNT

INSTALLATION GUIDE



INSTALLING CONDUIT MOUNT TILE



Lift up the tile above which overlaps the Tile you want to run conduit across. The tile does not need to be removed, just lifted on the front edge.



With the tile lifted to the appropriate height, slide the hook end of the Conduit Mount Tile under the tile and hook it on the tile below.

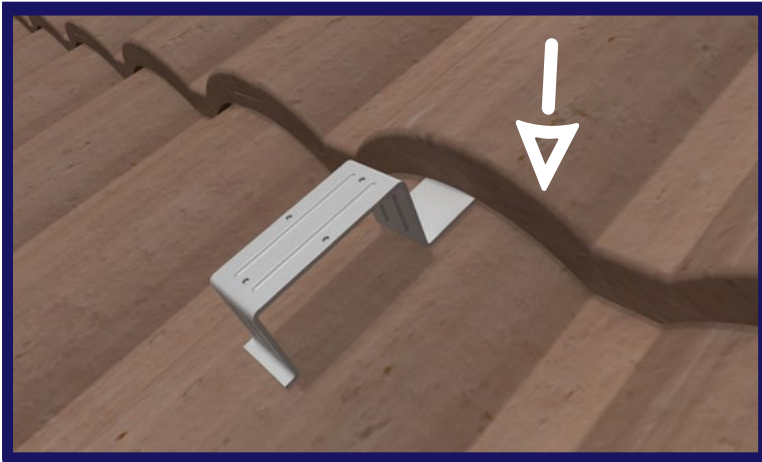
INSTALLATION

CONDUIT MOUNT

INSTALLATION GUIDE



INSTALLING CONDUIT MOUNT TILE



Replace the top tile, taking care that it properly interconnects with adjacent tiles. The weight of the tile will hold the Conduit Mount Tile in place.



Install a conduit clamp (not included) using either one of the mounting holes on the top of the bracket.

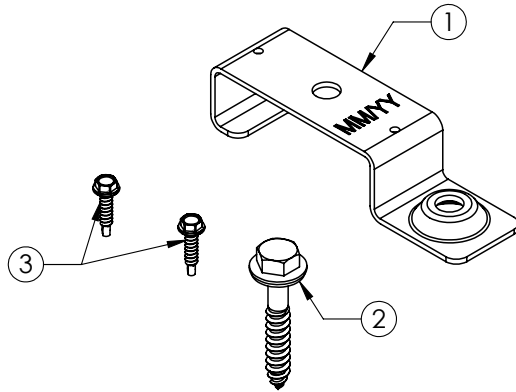
CONDUIT MOUNT

INSTALLATION GUIDE



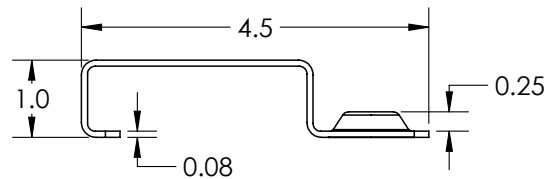
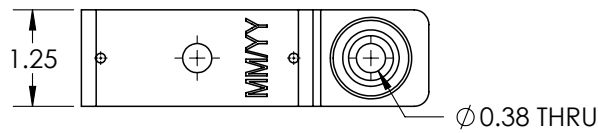
CUT SHEET: CONDUIT BRKT COMP MLL

PART NUMBER	DESCRIPTION
3011010	CONDUIT BRKT COMP MLL



ITEM NO.	DESCRIPTION
1	CONDUIT MOUNT - COMP. SHINGLE, W/ DIMPLE
2	SS LAG BOLT AND BONDED WASHER ASSEMBLY, 5/16-9 X 2.00 LG.
3	SELF DRILLING SCREW, #8 X .75

1) CONDUIT MOUNT - COMP. SHINGLE, W/ DIMPLE



Material	Aluminum
Finish	Mill

REV.- CS1

LINE DRAWINGS

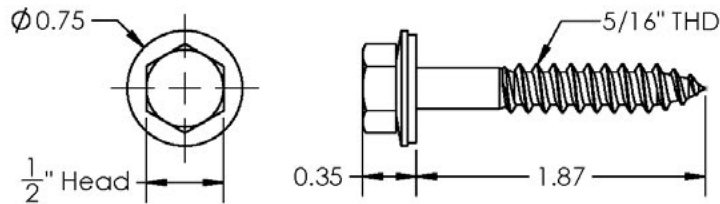
CONDUIT MOUNT

INSTALLATION GUIDE



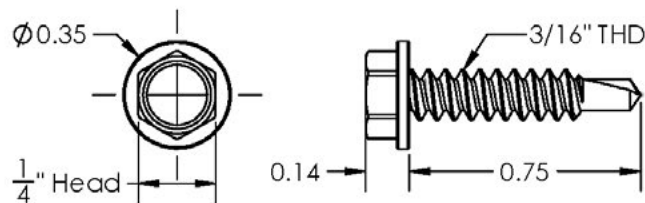
CUT SHEET: CONDUIT BRKT COMP MLL

2) SS LAG BOLT AND BONDED WASHER ASSEMBLY, 5/16-9 X 2.00 LG.



Material	Stainless Steel/EPDM
Finish	Mill

3) SELF DRILLING SCREW, #8 X .75



Material	Stainless Steel
Finish	Mill

REV.- CS1

LINE DRAWINGS

CONDUIT MOUNT

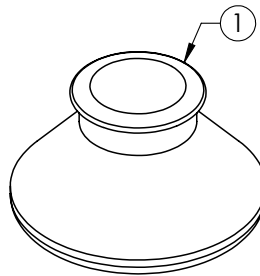
INSTALLATION GUIDE



EcoFasten®
For Installers. By Installers.

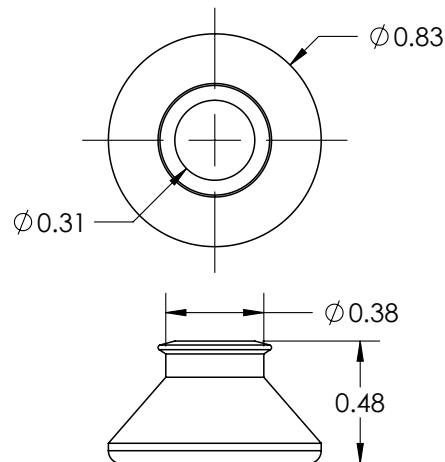
CUT SHEET: SIMPLESEAL EPDM BUSHING (50)

PART NUMBER	DESCRIPTION
3016015	SIMPLESEAL EPDM BUSHING (50)



ITEM NO.	DESCRIPTION
1	SIMPLE SEAL

1) SIMPLE SEAL



Material	Rubber
Finish	Black

REV.- CS1

LINE DRAWINGS

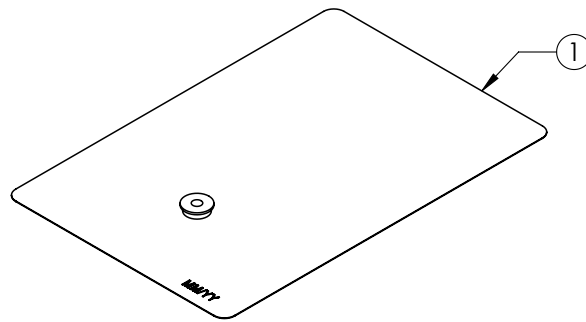
CONDUIT MOUNT

INSTALLATION GUIDE



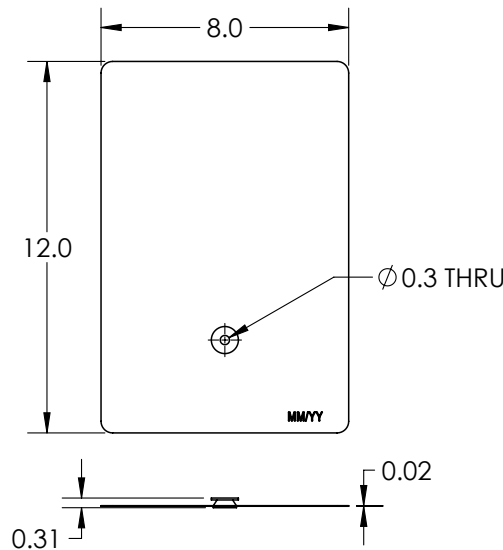
CUT SHEET: GF-1 FLASHING GLV BLK 8X12"

PART NUMBER	DESCRIPTION
3012010	GF-1 FLASHING GLV BLK 8X12"



ITEM NO.	DESCRIPTION
1	GF1-GAL-BLK-812

1) GF1-GAL-BLK-812



Material	Corrosion Resistant Steel
Finish	Black

REV.- CS1

LINE DRAWINGS

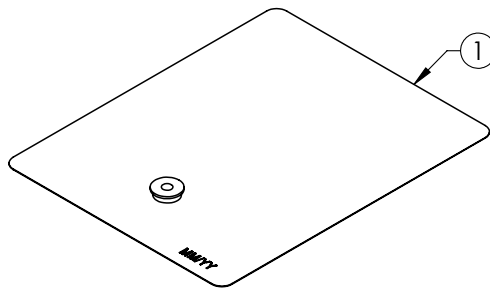
CONDUIT MOUNT

INSTALLATION GUIDE



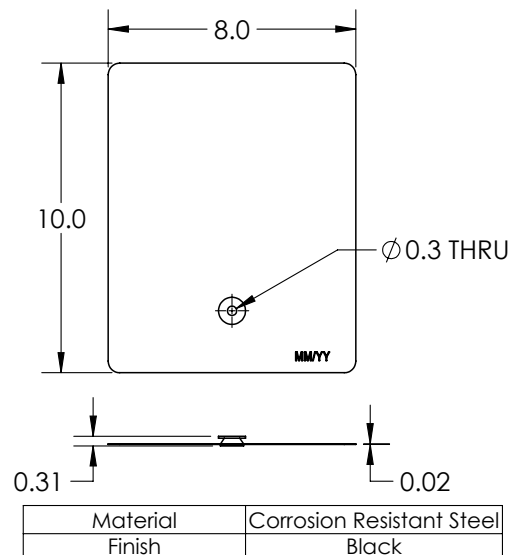
CUT SHEET: GF-1 FLASHING GLV BLK 8X10"

PART NUMBER	DESCRIPTION
3012020	GF-1 FLASHING GLV BLK 8X10"



ITEM NO.	DESCRIPTION
1	GF1M-GAL-BLK-810 W/O WASHER ASSEMBLY

1) GF1M-GAL-BLK-810 W/O WASHER ASSEMBLY



REV.- CS1

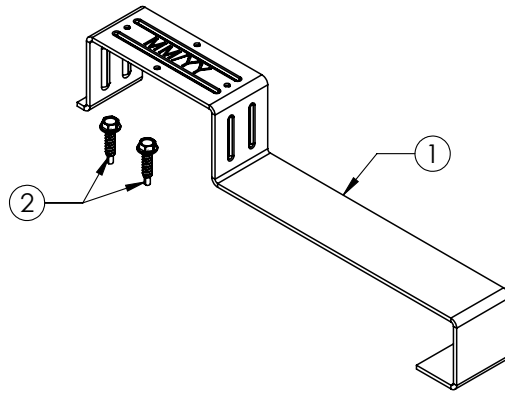
CONDUIT MOUNT

INSTALLATION GUIDE



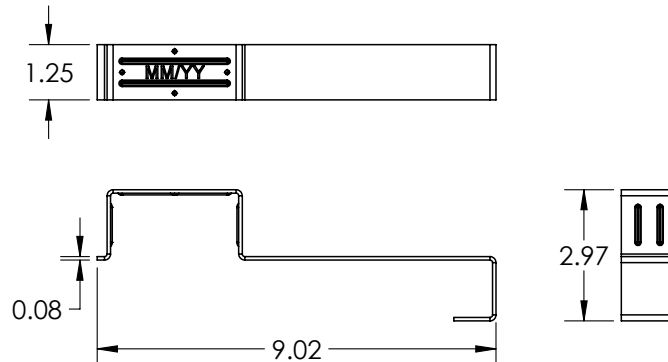
CUT SHEET: CONDUIT BRKT TILE MLL

PART NUMBER	DESCRIPTION
3011011	CONDUIT BRKT TILE MLL



ITEM NO.	DESCRIPTION
1	CONDUIT MOUNT-TILE
2	SELF DRILLING SCREW, #8 X .75

1) CONDUIT MOUNT-TILE



Material	Aluminum
Finish	Mill

REV.- CS1

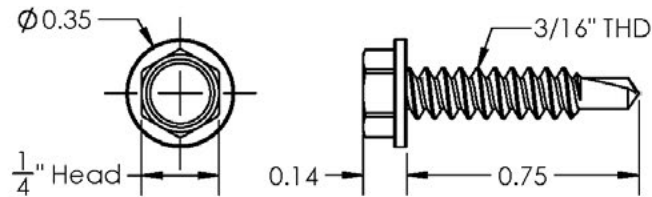
CONDUIT MOUNT

INSTALLATION GUIDE



CUT SHEET: CONDUIT BRKT TILE MLL

2) SELF DRILLING SCREW, #8 X .75



Material	Stainless Steel
Finish	Mill

REV.- CS1

LINE DRAWINGS

CONDUIT MOUNT

INSTALLATION GUIDE



EcoFasten®
For Installers. By Installers.

SYSTEM COMPONENTS - CONDUIT BRKT COMP MLL

1. **GF-1 Flashing:**

All flashing options come with a pre-installed integrated EPDM grommet and one bonded stainless steel EPDM washer. Flashing are available in two options:

1. 8 x 10" .032 gauge galvalume with black (kynar painted) finish.
2. 8 x 12" .032 gauge aluminum with black (kynar painted) finish.

2. **Conduit Mount Comp Bracket**

Consists of (1) 5000 series aluminum Conduit Comp Bracket, (1) stainless steel 5/16"-2" hex head lag screw and (1) 5/16" EPDM bonded sealing washer.

3. **Recommended Sealant:**

If required by roof manufacturer, sealant shall be roof manufacturer approved.

SYSTEM COMPONENTS - CONDUIT BRKT TILE MLL

1. **Conduit Mount Tile:**

Consists of (1) aluminum Conduit Mount Tile bracket.

DELIVERY / STORAGE / HANDLING

Inspect material upon delivery. Notify manufacturer within 24 hours of any missing or defective items. Keep material dry, covered and off the ground until installed.

PATENTS

CONDUIT MOUNT

INSTALLATION GUIDE



EcoFasten®
For Installers. By Installers.

Visit www.efpatents.com for patent information.

DESIGN REQUIREMENTS

1. Spacing to be recommended by project engineer.
2. Fasten attachment to roof using included fastener. Conduit Mount Tile does not require a fastener, it is simply hooked onto the tile.
3. It is important to design new structures or assess existing structures to make sure they withstand retained loads.

EXAMINATION

1. Notify General Contractor of any deficiencies before installing EcoFasten Solar brackets.
2. Verify that roofing material has been installed correctly prior to installing solar attachment bracket.

INSTALLATION

Comply with architectural drawings and project engineer's recommendation for location of system. Comply with Manufacturer's written installation instructions for installation and layout.