

CORRU SLIDE[®]

WATERTIGHT HINGE-STYLE SOLAR MOUNT

CorruSlide is engineered to universally fit nearly all corrugated metal roof profiles. The adjustable hinge-style mount attaches to the sides of the panel ribs, away from the valleys where water flows, and moisture accumulates. CorruSlide features allows for North-South & East-West adjustability, and the pre-installed EPDM gasket tape and five self-tapping screws with EPDM washers ensure rugged watertight performance. For use on corrugated roof panels with a minimum thickness of 26 gauge.

FEATURES & BENEFITS

- Patented watertight technology
- Versatile hinge-style mount fits most profiles
- Pre-installed EPDM gasket tape forms an impenetrable moisture barrier
- Five self-tapping screws with EPDM washers ensure optimum strength
- Ideal for use on both commercial and residential applications

MULTIPLE WATERTIGHT FASTENERS FOR OPTIMUM STRENGTH



ROOF TYPE

Corrugated &
Trapezoidal Metal



RACKING

Rail-Based
Rail-Less



ATTACHMENT

Direct-Attach
to Corrugation



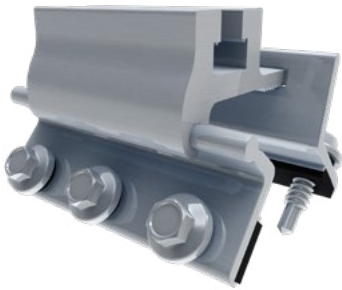
CORRUSLIDE®



WATERTIGHT,
HINGE-STYLE
SOLAR MOUNT

CONFIGURATION OPTIONS

1. CORRUSLIDE SYSTEM



Corruslide
Mount

2. CHOOSE YOUR BRACKET:

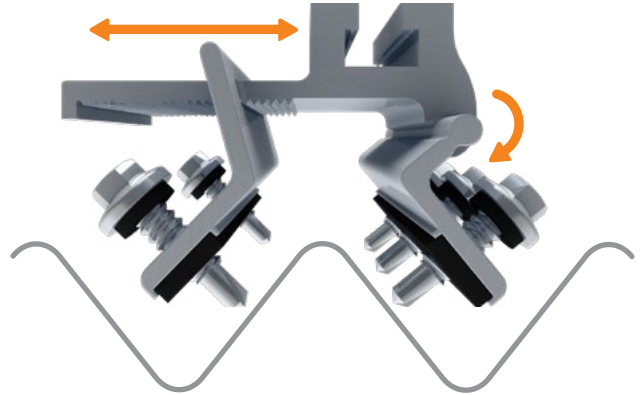


ClickFit Universal L-Foot
3", Mill Finish



3" Open Slot L-Foot
Black Anodized

HOW IT WORKS



Corruslide's hinged tongue-and-groove design provides a custom-fit to most corrugated profiles

CORRUSLIDE IS ALSO COMPATIBLE WITH THIRD-PARTY BRACKETS

[VIEW THE COMPLETE PARTS LIST](#)