

**CORRU
SLIDE®**

**MULTIPLE WATERTIGHT FASTENERS
FOR OPTIMUM STRENGTH**

INSTALLATION GUIDE

REVISION: 1/24/25

VERSION: V3.3

CORRUSLIDE

INSTALLATION GUIDE



EcoFasten®
For Installers. By Installers.

CLICKING THE PAGE NAME WILL TAKE YOU TO THAT PAGE

TABLE OF CONTENTS **PAGE 01**

FEATURES & BENEFITS **PAGE 02**

COMPONENTS **PAGE 03**

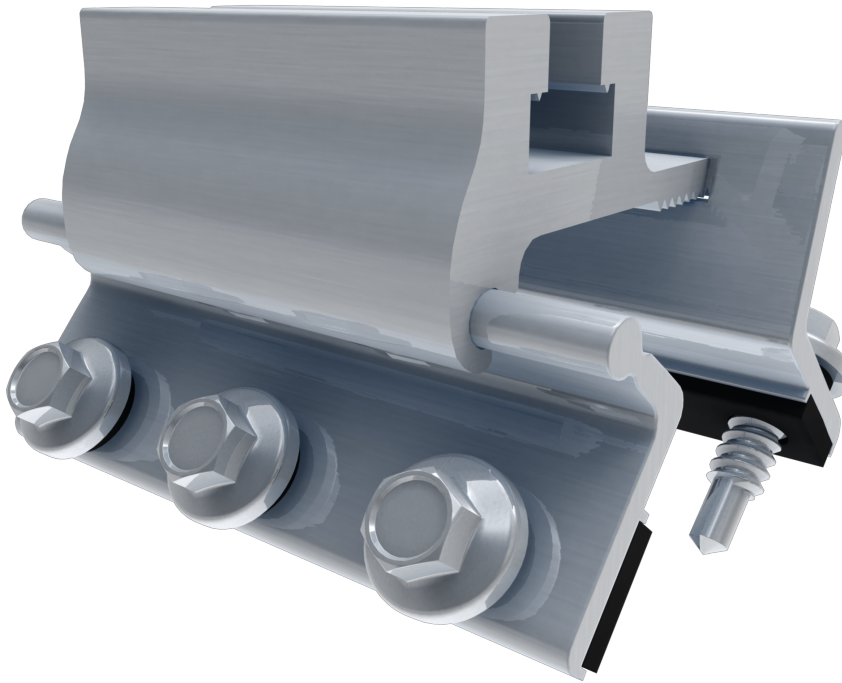
INSTALLATION **PAGE 04**

SPECIFICATIONS **PAGE 06**

TABLE OF CONTENTS

CORRUSLIDE

INSTALLATION GUIDE



CORRUSLIDE

CorruSlide is engineered to universally fit nearly any corrugated metal roof profile. The adjustable hinged mount attaches to the sides of the panel ridges, avoiding low areas where standing water may form. CorruSlide provides North-South & East-West adjustability. The pre-installed EPDM gaskets and five self-tapping screws with EPDM washers ensure rugged, watertight performance. For use on corrugated roof panels with a minimum thickness of 26 gauge.

FEATURES

- Watertight Technology
- Versatile hinge design fits nearly any profile
- Pre-installed EPDM gasket tape for an Impenetrable moisture barrier
- Five self-tapping screws with EPDM washers
- Ideal for use in both commercial and residential applications

CORRUSLIDE

INSTALLATION GUIDE

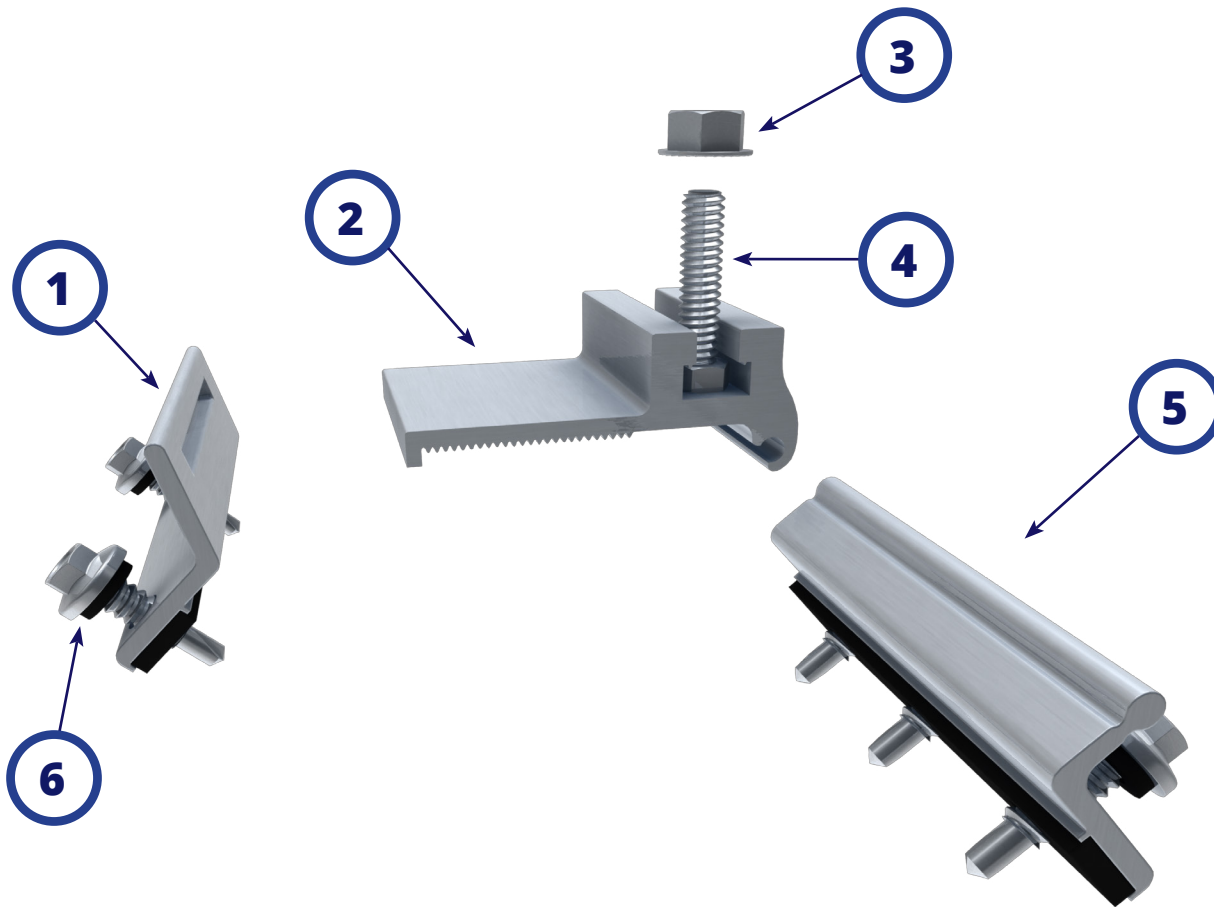
REVISION: 1/24/25

VERSION: V3.3



EcoFasten®
For Installers. By Installers.

SYSTEM COMPONENTS



1. CORRUSLIDE SLOT BRACKET

2. CORRUSLIDE TOP SLIDE

3. 5/16" SERATED FLANGE NUT

4. 5/16"-18x1.25 HEX BOLT

5. CORRUSLIDE FLIPPER

**6. 1/4"-14 SCREW WITH EPDM
BONDED SEALING WASHER (5X)**

COMPONENTS

CORRUSLIDE

INSTALLATION GUIDE

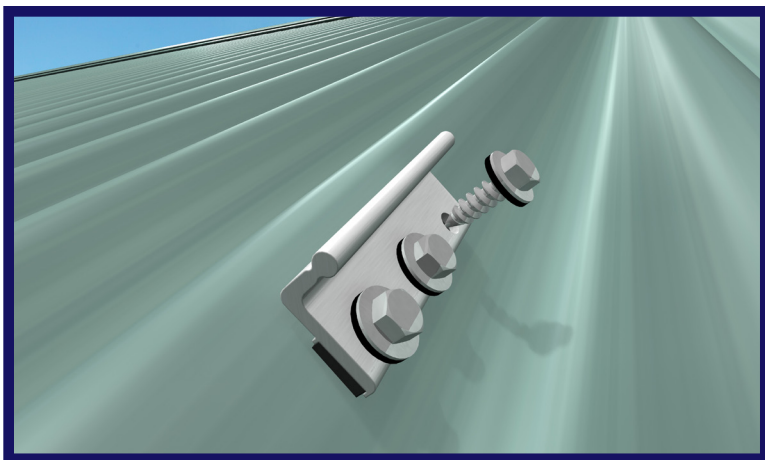
REVISION: 1/24/25

VERSION: V3.3



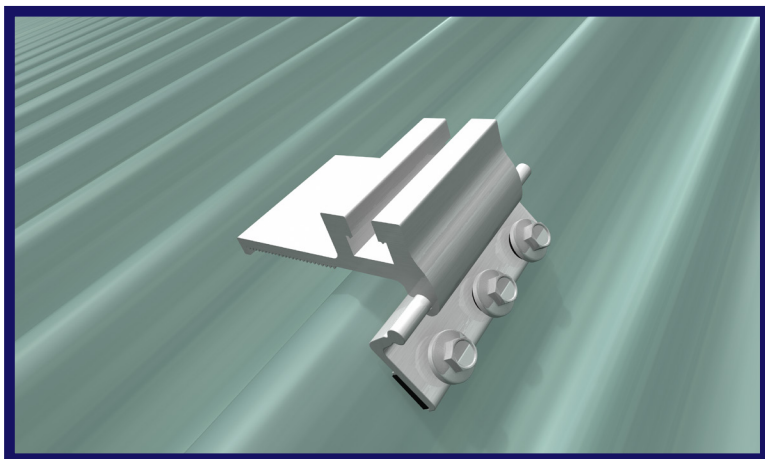
EcoFasten®
For Installers. By Installers.

INSTALLING CORRUSLIDE

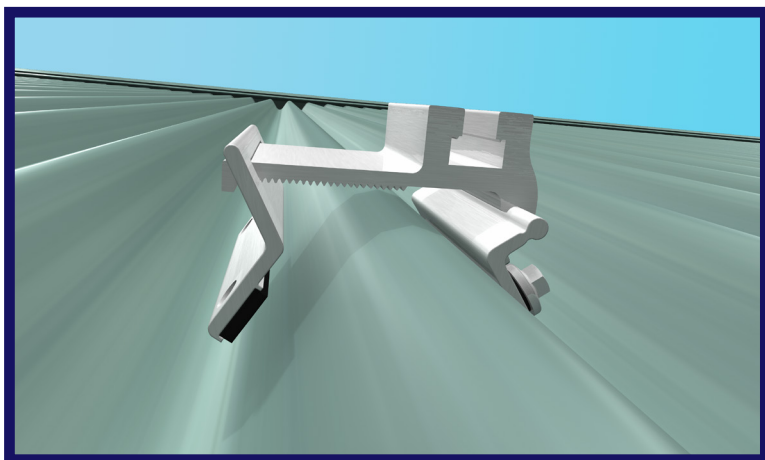


Pre-installation note: Check one complete CorruSlide assembly on the roof panel for proper fit and mounting location prior to installing the screws.

Installation: Place the CorruSlide-Flipper in position on the side of the metal roof corrugation and drill the 3 screws in to place.



Tilt the CorruSlide Top Slide upward and slide into place over the installed CorruSlide Flipper



Slide the CorruSlide Slot Bracket over the serrated leg of the CorruSlide Top Slide. It is important to adjust the Top Slide so that it is level with the roof. Note that depending upon the roof profile it may be necessary to skip a ridge/valley.

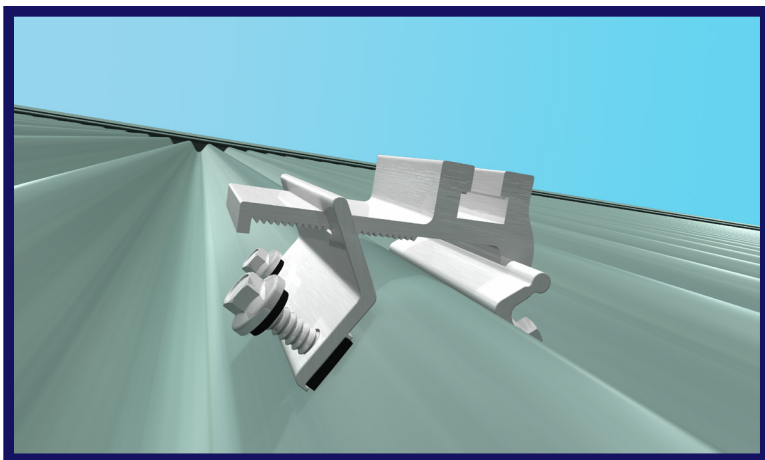
INSTALLATION

CORRUSLIDE

INSTALLATION GUIDE

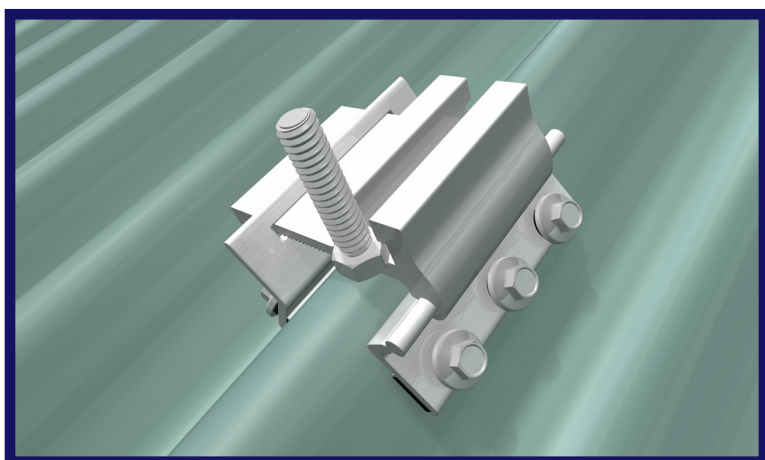


INSTALLING CORRUSLIDE

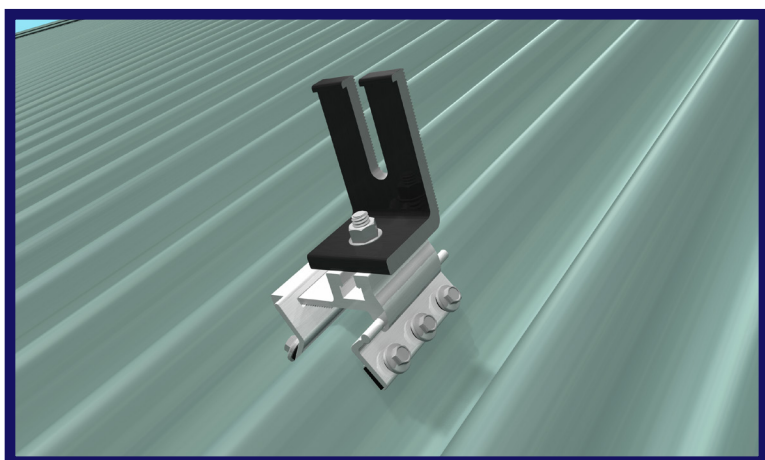


Secure the Corruslide Slot Bracket to the side of the roof corrugation using by drilling the remaining 2 screws into place.

Note: Once completely installed, the CorruSlide assembly will have some wiggle/jingle to in order to accomodate for thermal expansion and contraction of the roof due various temperature ranges.



Slide the 5/16" hex head bolt into the track on the top of the Corruslide Top Slide.



Thread the desired rail attachment bracket onto the bolt and secure the bracket to the corrugslide using the 5/16" serated flange nut.

CORRUSLIDE

INSTALLATION GUIDE



EcoFasten®
For Installers. By Installers.

SYSTEM COMPONENTS

1. **Corruslide Mount AL:**

Consists of (1) stainless steel Corruslide Top Slide, (1) stainless steel Corruslide slot bracket with EPDM gasket seal, (1) stainless steel Corruslide flipper with EPDM gasket seal, (1) stainless steel 5/16"-18x1.25" hex hex bolt, (1) stainless steel serrated flange nut, and (5) 1/4"-14 screw with EPDM bonded sealing washer.

2. **Fastener:**

The five required screws are included with the Corruslide.

3. **Recommended Sealant:**

If required by roof manufacturer, sealant shall be roof manufacturer approved.

DELIVERY / STORAGE / HANDLING

Inspect material upon delivery. Notify manufacturer within 24 hours of any missing or defective items. Keep material dry, covered and off the ground until installed.

PATENTS

Visit www.efpatents.com for patent information.

CORRUSLIDE

INSTALLATION GUIDE



EcoFasten®
For Installers. By Installers.

DESIGN REQUIREMENTS

1. Bracket spacing to be recommended by project engineer.
2. Fasten attachment to roof using all five included fasteners.
3. It is important to design new structures or assess existing structures to make sure they withstand retained loads.

EXAMINATION

1. Substrate: Inspect structure on which brackets are to be installed and verify that it will withstand any additional loading that may be incurred.
2. Notify General Contractor of any deficiencies before installing EcoFasten Solar brackets.
3. Verify that roofing material has been installed correctly prior to installing solar attachment bracket.

INSTALLATION

Comply with architectural drawings and project engineer's recommendation for location of system. Comply with Manufacturer's written installation instructions for installation and layout.

SPECIFICATIONS