

GF-1®

**COMPLETE MOUNT
& FLASHING ASSEMBLY**

INSTALLATION GUIDE

REVISION: 1/24/25

VERSION: V3.2

GF-1

INSTALLATION GUIDE



EcoFasten®
For Installers. By Installers.

CLICKING THE PAGE NAME WILL TAKE YOU TO THAT PAGE

[**TABLE OF CONTENTS**](#) [**PAGE 01**](#)

[**FEATURES & BENEFITS**](#) [**PAGE 02**](#)

[**COMPONENTS**](#) [**PAGE 03**](#)

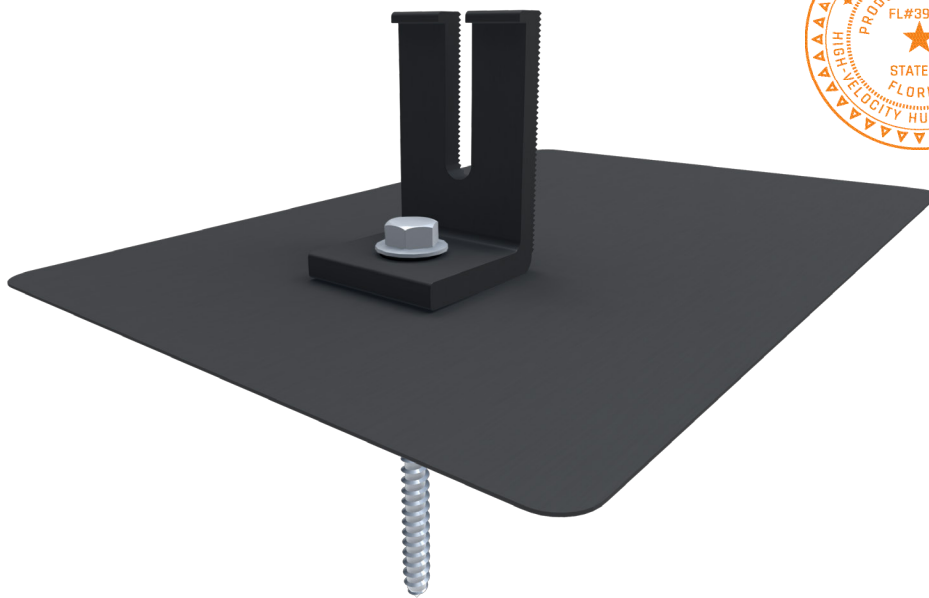
[**INSTALLATION**](#) [**PAGE 04**](#)

[**SPECIFICATIONS**](#) [**PAGE 06**](#)

TABLE OF CONTENTS

GF-1

INSTALLATION GUIDE



GF-1

GF-1 is our most versatile solution for composition shingle roofs. Install the flashing using a single fastener for a quick & easy installation. When using the GF-1 flashing grommet and an EcoFasten compression bracket, a watertight seal is created, maintaining the integrity of the roof.

FEATURES

- Mill or black finish
- Patented Watertight Technology
- Installs without removing shingles
- Single lag bolt attachment
- Compatible with a variety of compression brackets
- Florida Product Approved for any combination of 8"x12" GF-1 flashing with the ClickFit L-foot & Lag Screw

FEATURES + BENEFITS

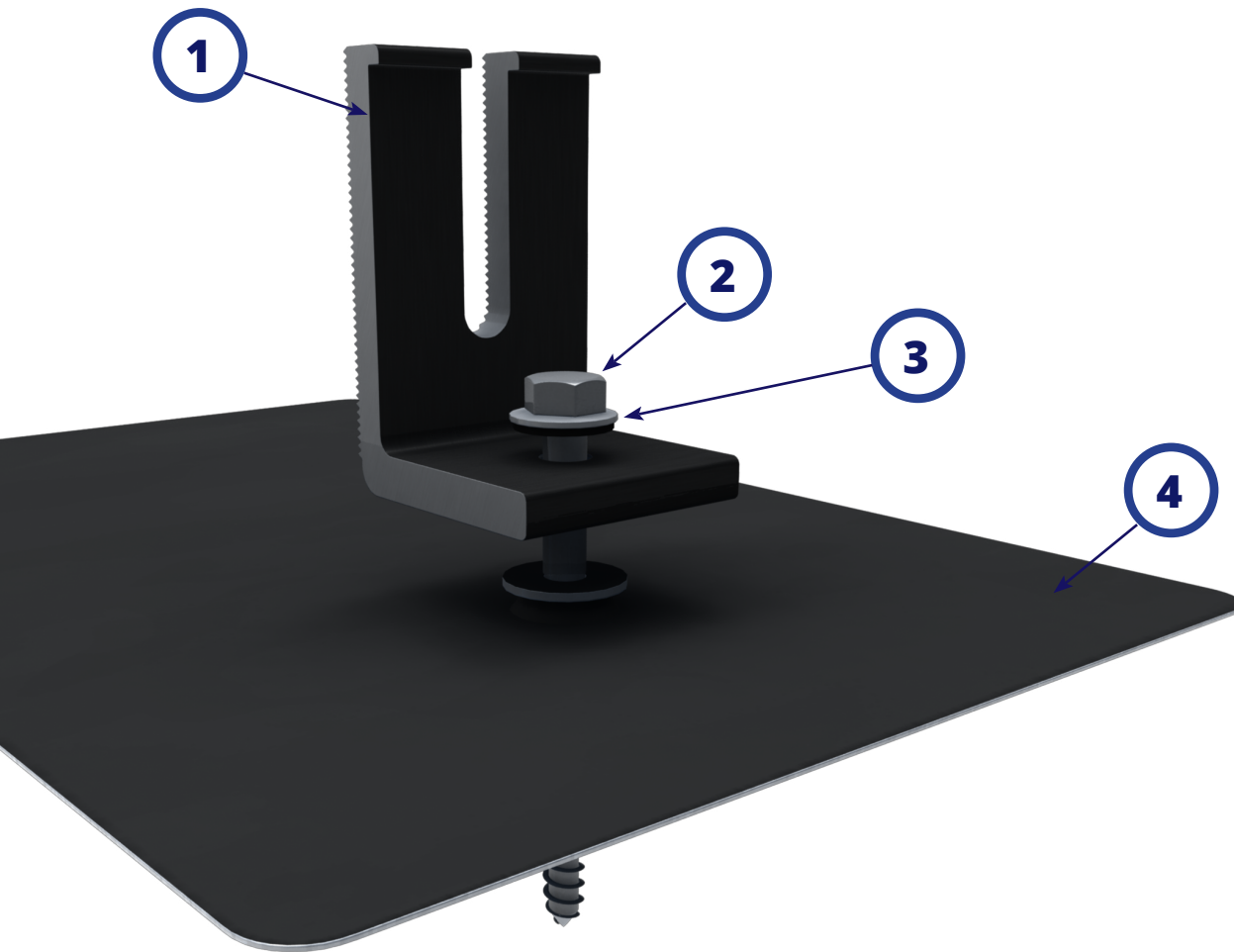
GF-1

INSTALLATION GUIDE



EcoFasten®
For Installers. By Installers.

SYSTEM COMPONENTS



1. L-FOOT SCL-101 BLK 3"

**2. 5/16" LAG BOLT
(AVAILABLE IN 3" AND 4")**

3. 5/16" EPDM BONDED WASHER

**4. GF-1 FLASHING FLASHING WITH PRE-
INSTALLED EPDM RUBBER GASKET**

**(AVAILABLE IN 8X10 & 8X12, BLACK FINISH
ONLY)**

COMPONENTS

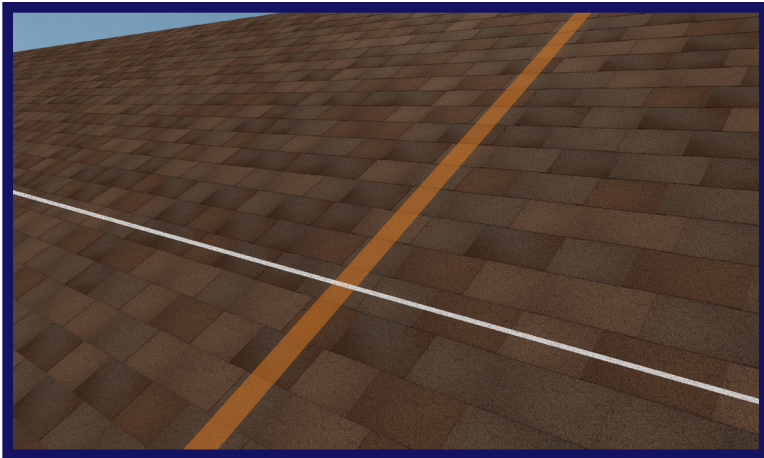
GF-1

INSTALLATION GUIDE



EcoFasten®
For Installers. By Installers.

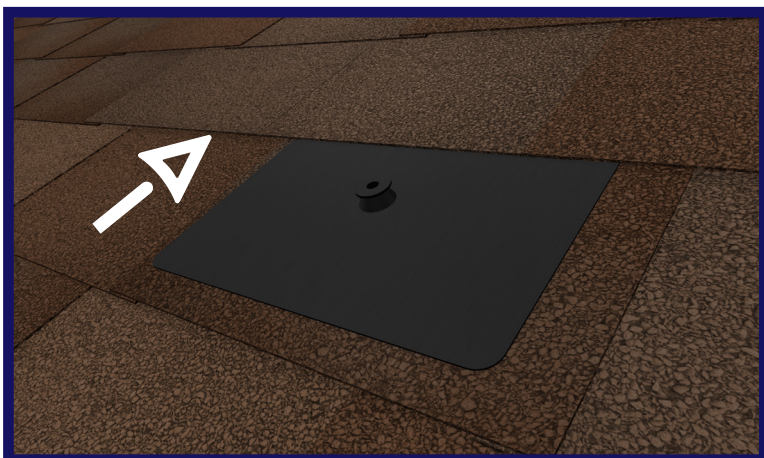
INSTALLING GF-1



Snap horizontal lines across the roof to mark the mount rows, then locate the rafter and mark the installation position of each GF-1 flashing.



Drill a 7/32" pilot hole into the rafter or structural member for the lag screw. Backfill with sealant compatible with the roof type.



Slide flashing up under the next row of shingles directly above the pilot hole, taking care to align the hole in the flashing with the pilot hole.

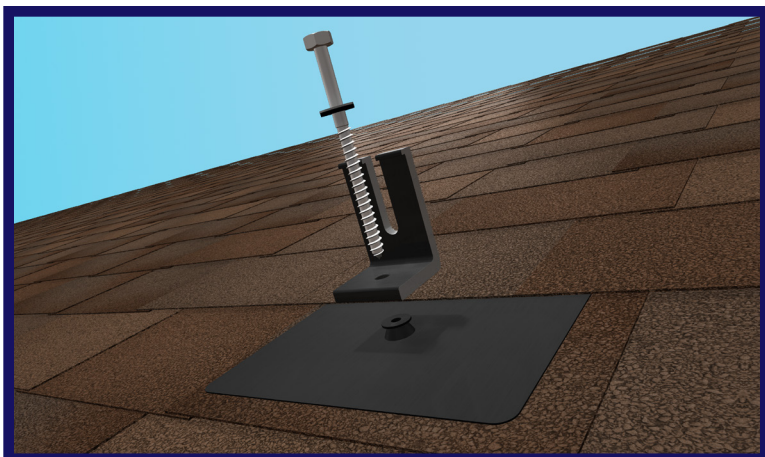
INSTALLATION

GF-1

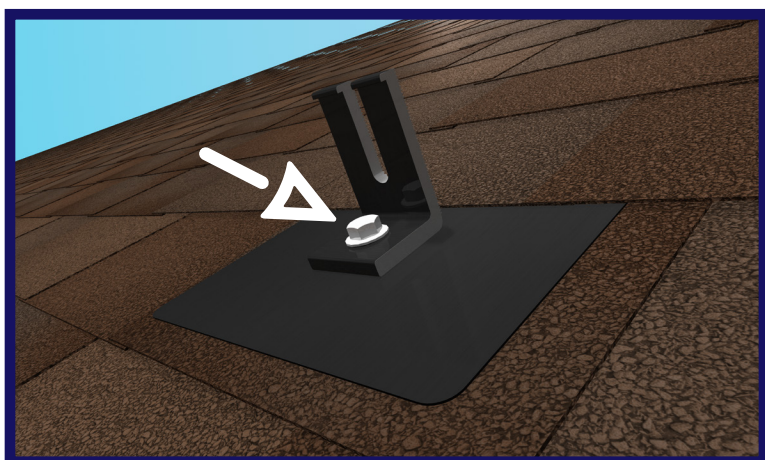
INSTALLATION GUIDE



INSTALLING GF-1



Thread the EPDM bonded washer onto the lag bolt followed by one of EcoFasten's compression brackets and then insert the lag bolt into the gasketed hole in the flashing.



Drive the lag bolt down into the rafter using an impact driver. Torque range is between 100-400 torque inch-pounds depending on the type of wood and time of year. The visual indicator for proper torque is when the EPDM on the underside of the bonded washer begins to push out the sides as the washer compresses. Do not over torque.

INSTALLATION

GF-1

INSTALLATION GUIDE



SYSTEM COMPONENTS

1. **GF-1 Flashing:**

All flashing options come with a pre-installed integrated EPDM grommet and one bonded stainless steel EPDM washer. Flashing are available in two options:

1. 8 x 10" .032 gauge galvalume with black (kynar painted) finish.
2. 8 x 12" .032 gauge aluminum with black (kynar painted) finish.

2. **Aluminum Compression Bracket:**

Compatible with a variety of EcoFasten compression brackets. EcoFasten compression brackets are made out 6000 series aluminum with options available for mill or black finishes depending on the bracket.

3. **Recommended Fasteners**

5/16"x4" lag bolts. 3" option also available.

4. **Recommended Sealant:**

If required by roof manufacturer, sealant shall be roof manufacturer approved.

DELIVERY / STORAGE / HANDLING

Inspect material upon delivery. Notify manufacturer within 24 hours of any missing or defective items. Keep material dry, covered and off the ground until installed.

FLORIDA PRODUCT APPROVAL

GF-1

INSTALLATION GUIDE



Approved for any combination of 8"x12" GF-1 flashing with the ClickFit L-foot & Lag Screw.

PATENTS

Visit www.efpatents.com for patent information.

DESIGN REQUIREMENTS

1. Bracket spacing to be recommended by project engineer.
2. It is important to design new structures or assess existing structures to make sure they withstand retained loads.

EXAMINATION

1. Substrate: Inspect structure on which brackets are to be installed and verify that it will withstand any additional loading that may be incurred.
2. Notify General Contractor of any deficiencies before installing EcoFasten Solar brackets.
3. Verify that roofing material has been installed correctly prior to installing solar attachment bracket.

INSTALLATION

Comply with architectural drawings and project engineer's recommendation for location of system. Comply with Manufacturer's written installation instructions for installation and layout.