



# SIM SUPPORT

## WATERTIGHT BRACKET WITH CENTER LIFT

**REVISION:** 1/24/25

**VERSION:** V3.1

# SIMSUPPORT

## INSTALLATION GUIDE



**EcoFasten®**  
For Installers. By Installers.

*CLICKING THE PAGE NAME WILL TAKE YOU TO THAT PAGE*

**TABLE OF CONTENTS** **PAGE 01**

**FEATURES & BENEFITS** **PAGE 02**

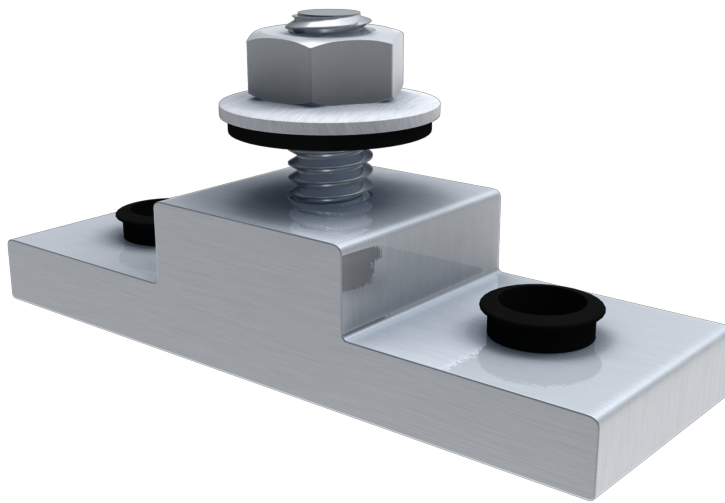
**COMPONENTS** **PAGE 03**

**INSTALLATION** **PAGE 04**

**SPECIFICATIONS** **PAGE 06**

# SIMSUPPORT

## INSTALLATION GUIDE



## SIMSUPPORT

The SimSupport bracket has two attachment points and utilizes our simple seal bushing for a watertight attachment. SimSupport features a center lift and can accommodate an EcoFasten compression bracket or third-party bracket. Due to its small foot print, the mount is ideal for narrow pans between ridges.

## FEATURES

- Patented Watertight Technology
- Compatible with our 3" aluminum open slot black L-Foot.
- Two attachment points for optimum pullout values
- Fastener spacing allows for 2 fasteners per wood rafter

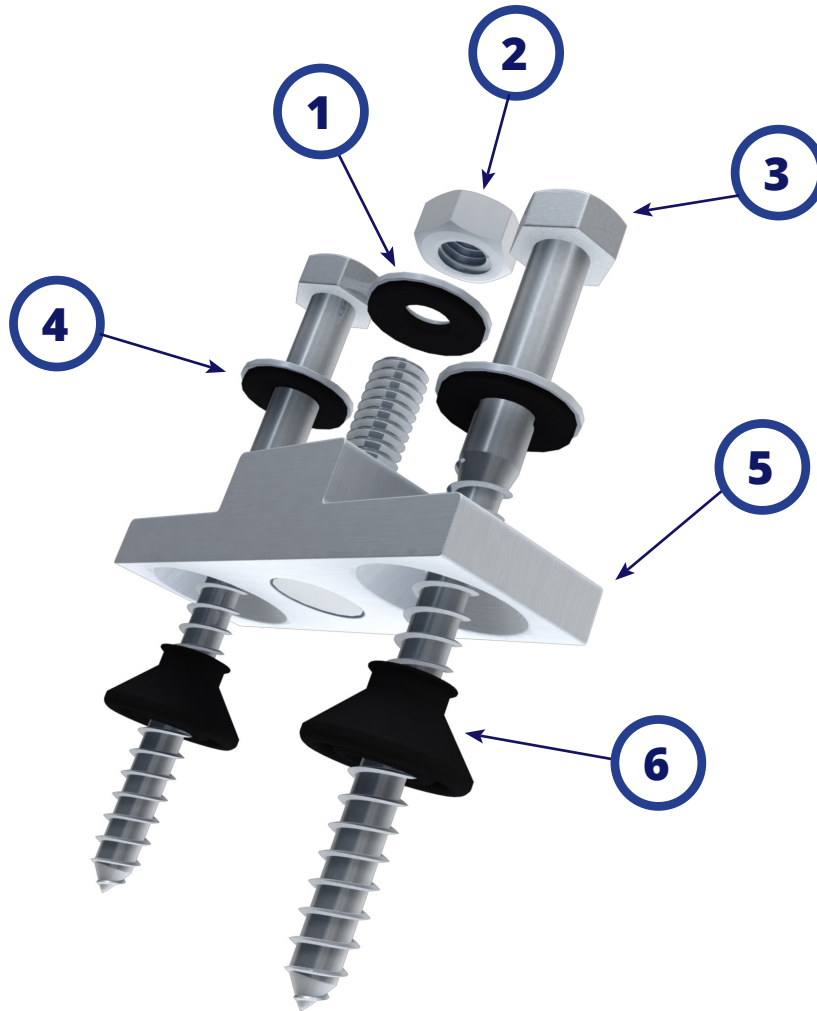
# SIMSUPPORT

## INSTALLATION GUIDE



**EcoFasten®**  
For Installers. By Installers.

## SYSTEM COMPONENTS



**1. 3/8" EPDM BONDED WASHER**

**2. 3/8" LOCK NUT**

**3. 5/16" X 4" LAG BOLT**

**4. 5/16" EPDM BONDED WASHER**

**5. SIM-SUPPORT MOUNT AL**

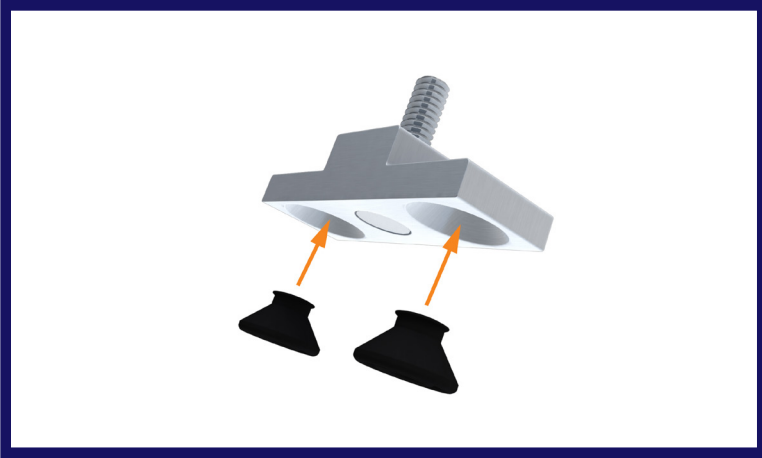
**6. SIMPLESEAL EPDM BUSHING**

# SIMSUPPORT

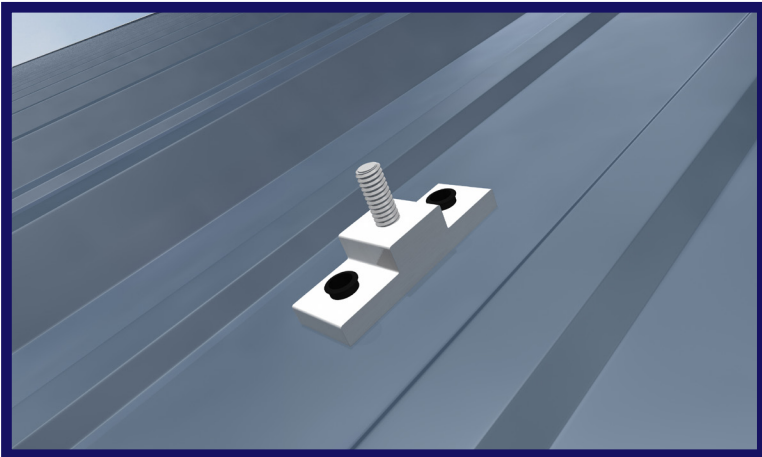
## INSTALLATION GUIDE



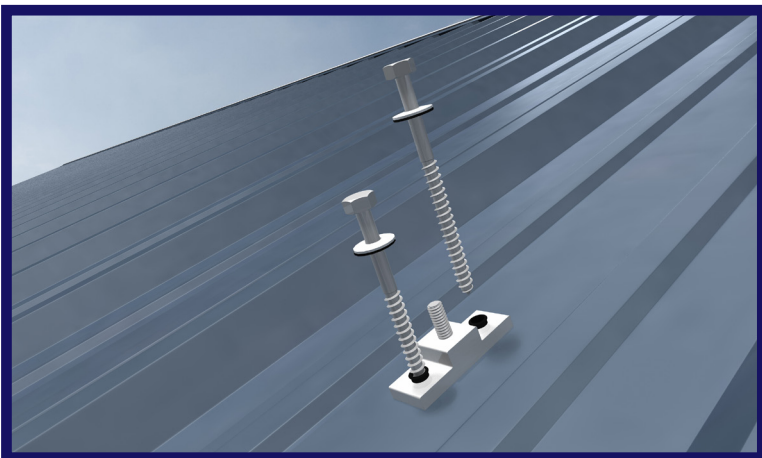
## INSTALLING SIMSUPPORT



Preinstall both cone-shaped rubber SimpleSeal bushing into the SimSupport bracket by inserting the tip of each cone in to the corresponding shape in the bottom of the compression bracket. The ridge around the tip of the cone will hold the bushing in place until the bracket is installed.



Place the compression bracket on roof surface above a supporting structural component, ensuring that the bushing sits flat against the roof surface.



Thread the 5/16" EPDM bonded sealing washers onto the 5/16" lag bolts and insert the bolts into the top of SimpleSeal bushings.

INSTALLATION

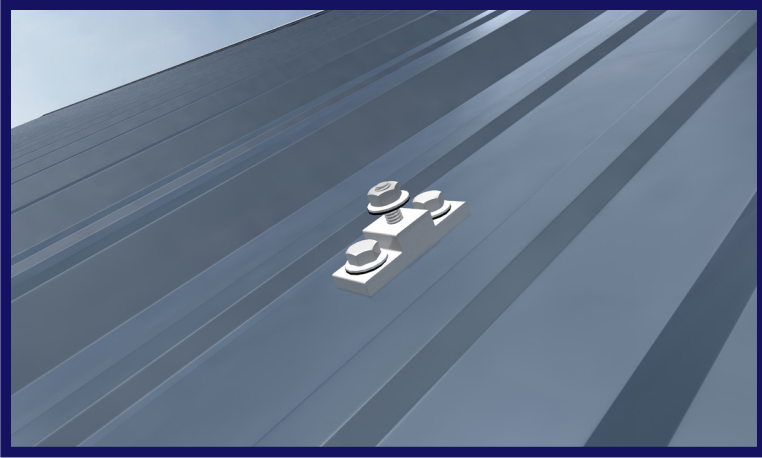
# SIMSUPPORT

## INSTALLATION GUIDE



**EcoFasten®**  
For Installers. By Installers.

## INSTALLING SIMSUPPORT



Tighten fastener until bracket is pulled down snug to the roof surface. The tension required will vary with the project roof deck, age, and type. Be sure not to over tighten the fasteners and strip the threads.

Use the 3/8" lock nut and sealing washer to attach any EcoFasten compression bracket or third party compression bracket to the machine bolt in the center of the SimSupport.

INSTALLATION



# SIMSUPPORT

## INSTALLATION GUIDE



**EcoFasten®**  
For Installers. By Installers.

### SYSTEM COMPONENTS

1. **SimSupport Mount AL:**

Consists of (1) SimSupport assembly with preinstalled 3/8" machine bolt. Comes with (2) 5/16" EPDM bonded sealing washers, (1) 3/8" bonded sealing washer, and (1) 3/8" lock nut and (2) EPDM rubber cone-shaped Sim Seal bushings.

2. **Aluminum Compression Bracket:**

Compatible with our 3" aluminum open slot black L-Foot.

3. **Recommended Fasteners**

5/16"x4" lag bolts.

4. **Recommended Sealant:**

If required by roof manufacturer, sealant shall be roof manufacturer approved.

### DELIVERY / STORAGE / HANDLING

Inspect material upon delivery. Notify manufacturer within 24 hours of any missing or defective items. Keep material dry, covered and off the ground until installed.

### PATENTS

Visit [www.efpatents.com](http://www.efpatents.com) for patent information.

# SIMSUPPORT

## INSTALLATION GUIDE



**EcoFasten®**  
For Installers. By Installers.

### DESIGN REQUIREMENTS

1. Bracket spacing to be recommended by project engineer.
2. Fasten attachment to roof using two 5/16" lag bolts.
3. It is important to design new structures or assess existing structures to make sure they withstand retained loads.

### EXAMINATION

1. Substrate: Inspect structure on which brackets are to be installed and verify that it will withstand any additional loading that may be incurred.
2. Notify General Contractor of any deficiencies before installing EcoFasten Solar brackets.
3. Verify that roofing material has been installed correctly prior to installing solar attachment bracket.

### INSTALLATION

Comply with architectural drawings and project engineer's recommendation for location of system. Comply with Manufacturer's written installation instructions for installation and layout.