
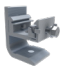






SIMPLESEAL

AVAILABLE SYSTEM COMPONENTS

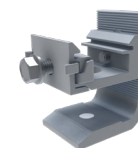
	PRODUCT IMAGE	PART NUMBER	PART DESCRIPTION	BOX QUANTITY	PALLET QUANTITY
SEAL		3016015	SIMPLESEAL EPDM BUSHING (50)	50/10000	80000
	INCLUDES (1) HEX FLANGE BOLT, FULL THREAD 5/16"-18, UNIVERSAL CLICKER X 3/4"				
BRACKETS		2012022	CF UNIV L-FOOT MLL 3"	50	4800
	INCLUDES (1) 3/8"-16 X 1.25" HEX HD CAP SCREW AND (1) 3/8"-16 FLANGE NUT FOR RACKING				
		3011018	L-FOOT SCL-101 BLK 3"	50	6000
	INCLUDES (1) 2" LAG BOLT AND (1) SS 8-18 X 3/4" TEK SCREW				
		3011010	CONDUIT BRKT COMP MLL	50	10350
	INCLUDES (1) 4" LAG SCREW AND (1) EPDM BONDED WASHER (PRE-ASSEMBLED)				
FASTENER		2011013	RI COMP SLIDE AL BLK	50	3600
	INCLUDES (1) 5/16" EPDM BONDED WASHER				
		3016017	LAG SCREW SS .313X4" W/BW (50)	50/250	15000

SIMPLESEAL:



3016015

CHOOSE YOUR BRACKET:



2012022



3011018



3011010



2011013