

SIMPLE SEAL

WATERTIGHT SEAL FOR
ECOFASTEN BRACKETS

INSTALLATION GUIDE

REVISION: 1/24/25

VERSION: V3.1

SIMPLESEAL

INSTALLATION GUIDE



EcoFasten[®]
For Installers. By Installers.

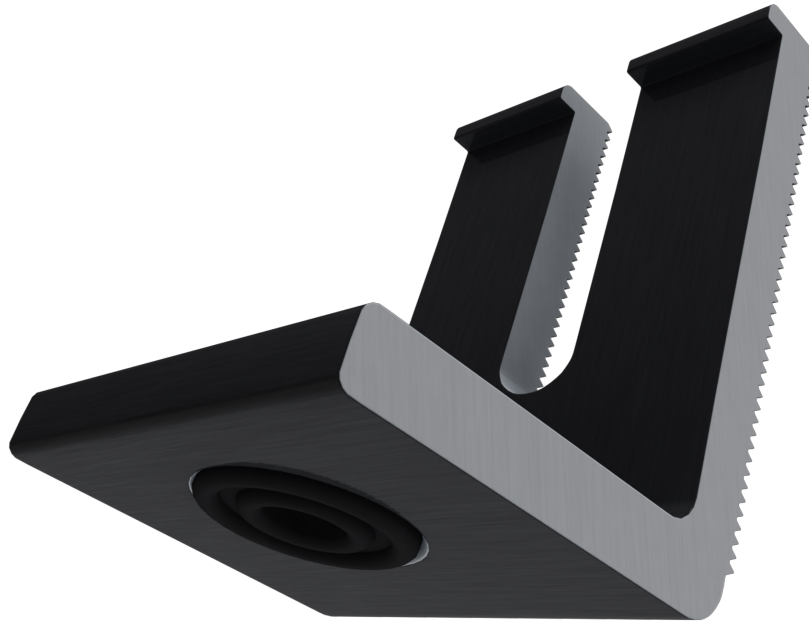
CLICKING THE PAGE NAME WILL TAKE YOU TO THAT PAGE

<u>TABLE OF CONTENTS</u>	<u>PAGE 01</u>
<u>FEATURES & BENEFITS</u>	<u>PAGE 02</u>
<u>COMPONENTS</u>	<u>PAGE 03</u>
<u>INSTALLATION</u>	<u>PAGE 04</u>
<u>SPECIFICATIONS</u>	<u>PAGE 06</u>

TABLE OF CONTENTS

SIMPLESEAL

INSTALLATION GUIDE



SIMPLESEAL

SimpleSeal was designed for installation on most metal roofs. The system utilizes a cone-shaped EPDM rubber bushing that fits into the countersink found on the underside of any EcoFasten compression bracket. When fastened to the roof, engaging a purlin or rafter, the SimpleSeal bushing is compressed inside the bracket, creating a watertight seal.

FEATURES

- Patented watertight technology
- Minimal components
- Compatible with a variety of EcoFasten compression brackets

FEATURES + BENEFITS

SIMPLESEAL

INSTALLATION GUIDE



SYSTEM COMPONENTS



1. 5/16" LAG BOLT
(AVAILABLE IN 3" AND 4")

2. L-FOOT SCL-101 BLK 3"

3. 5/16" EPDM BONDED WASHER

4. SIMPLESEAL EPDM BUSHING

COMPONENTS

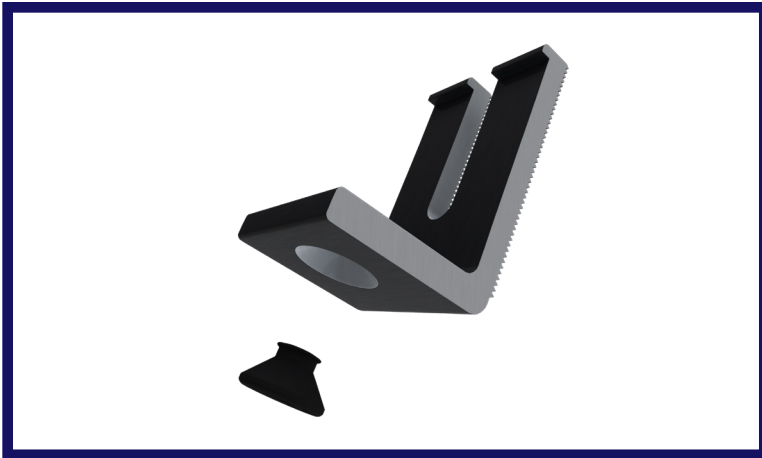
SIMPLESEAL

INSTALLATION GUIDE

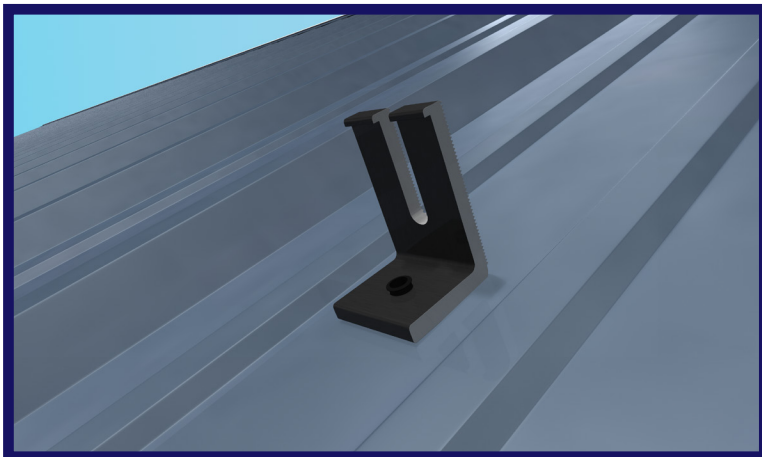


EcoFasten[®]
For Installers. By Installers.

INSTALLING SIMPLESEAL



Pre-install the cone-shaped rubber SimpleSeal EPDM bushing into an EcoFasten compression bracket of your choice prior to installation by inserting the tip of the cone into the corresponding shape in the bottom of the compression bracket. The ridge around the tip of the cone will hold the bushing in place until the bracket is installed.



Place the compression bracket on roof surface above a supporting structural component, ensuring that the bushing sits flat against the roof surface. SimpleSeal is not designed to be installed on any ridge or corrugation of the metal roof surface.

INSTALLATION

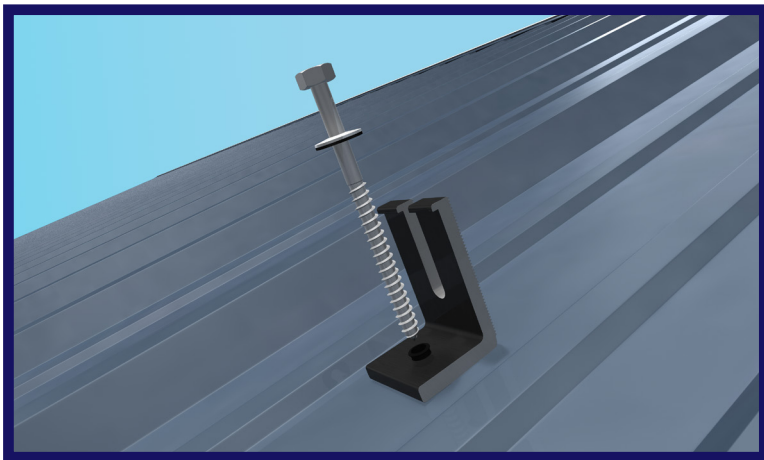
SIMPLESEAL

INSTALLATION GUIDE

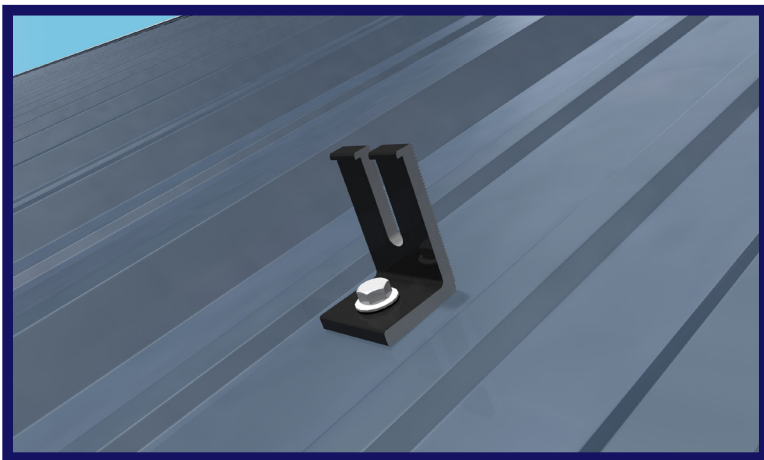


EcoFasten[®]
For Installers. By Installers.

INSTALLING SIMPLESEAL



Thread the 5/16" EPDM bonded sealing washer onto the 5/16" lag bolt and insert the bolt into the top of SimpleSeal EPDM bushing.



Tighten fastener until bracket is pulled down snug to the roof surface. The tension required will vary with the project roof deck, age, and type. Be sure not to over tighten the fasteners and strip the threads.

INSTALLATION

SIMPLESEAL

INSTALLATION GUIDE



EcoFasten[®]
For Installers. By Installers.

DISCLAIMER

This manual describes proper installation procedures and provides necessary standards required for product reliability. Warranty details are available on the website. All installers must thoroughly read this manual and have a clear understanding of the installation procedures prior to installation. Failure to follow these guidelines may result in property damage, bodily injury, or even death.

IT IS THE INSTALLER'S RESPONSIBILITY TO:

- Ensure safe installation of all electrical aspects of the array. All electrical installation and procedures should be conducted by a licensed and bonded electrician or solar contractor.
- All work must comply with national, state and local installation procedures, product and safety standards, including the proper use of PPE.
- Comply with all applicable local or national building and fire codes, including any that may supersede this manual.
- Ensure all products are appropriate for the installation, environment, and array under the site's loading conditions.
- Use only EcoFasten parts or parts recommended by EcoFasten; substituting parts may void any applicable warranty.
- Review the Design Assistant and Certification Letters to confirm design specifications.
- Ensure provided information is accurate. Issues resulting from inaccurate information are the installer's responsibility.
- Ensure bare copper grounding wire does not contact aluminum and zinc-plated steel components, to prevent risk of galvanic corrosion.
- If loose components or loose fasteners are found during periodic inspection, re-tighten immediately. Any components showing signs of corrosion or damage that compromise safety shall be replaced immediately.
- Provide an appropriate method of direct-to-earth grounding according to the latest edition of the National Electrical
- Code, including NEC 250: Grounding and Bonding, and NEC 690: Solar Photovoltaic Systems.
- Disconnect AC power before servicing or removing modules, AC modules, microinverters and power optimizers.
- Review module and any 3rd party manufacturer's documentation for compatibility and compliance with warranty terms and conditions.
- Module mounting rails shall not be used as scaffolding, a roof jack, or any form of an anchoring point for roof personnel.
- Ensure that the roof is in good condition prior to installing any EcoFasten components.

DISCLAIMER

The logo for CLICKFIT, with 'CLICK' in white and 'FIT' in orange, followed by a registered trademark symbol.

INSTALLATION GUIDE

The EcoFasten logo, featuring a stylized sun icon to the left of the text 'EcoFasten' in white, with the tagline 'For Installers. By Installers.' below it.

FOR INSTALLERS. BY INSTALLERS.

Under the PanelClaw brand and Enstell's corporate umbrella, EcoFasten has established a reputation as one of the industry's leading innovators by providing expert solutions for mounting solar PV on any roof. EcoFasten's broad portfolio of solar rooftop mounting systems and attachments stems from the direct needs of solar PV installers. EcoFasten takes pride in providing the right solution for every application.



1295 W. WASHINGTON STREET, SUITE 110, TEMPE, AZ 85288
877-859-3947 | INFO@ECOFASTENSOLAR.COM | ECOFASTENSOLAR.COM