



TR-MOUNT

REPLACEMENT TILE FLASHING AND ADJUSTABLE BASE

INSTALLATION GUIDE

REVISION: 2/12/24

VERSION: V3.1

TR-MOUNT

INSTALLATION GUIDE

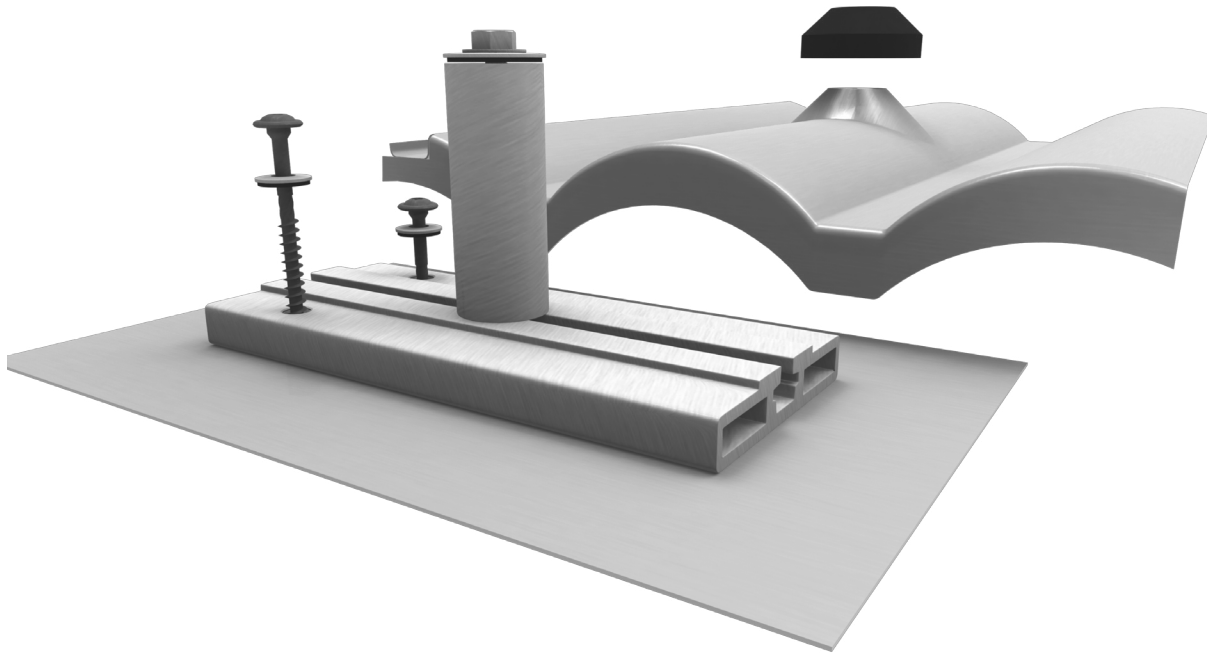


CLICKING THE PAGE NAME WILL TAKE YOU TO THAT PAGE

<u>TABLE OF CONTENTS</u>	<u>PAGE 01</u>
<u>FEATURES & BENEFITS</u>	<u>PAGE 02</u>
<u>COMPONENTS</u>	<u>PAGE 03</u>
<u>INSTALLATION</u>	<u>PAGE 04</u>
<u>LINE DRAWINGS</u>	<u>PAGE 07</u>
<u>SPECIFICATIONS</u>	<u>PAGE 19</u>

TR-MOUNT

INSTALLATION GUIDE



TR-MOUNT

The TR-Mount is designed for use on new or existing (retrofit) tile roofs and is available in Flat, S, & W-shaped tile profiles. This popular system replaces the tile located directly above the mount, eliminating the need for cutting or grinding tiles. One universal sized base mount fits all three tile profiles and features built in deck-level flashing on all four sides. Simply slide the post in it's track to align it with the hole in the top flashing for a quick and easy installation.

FEATURES

- Replaces a concrete tile, extra tile can be used to replace broken tiles
- Universal sized base with adjustable position post
- Available in Flat, S and W, shaped tile profiles
- Features built-in flashing on four sides

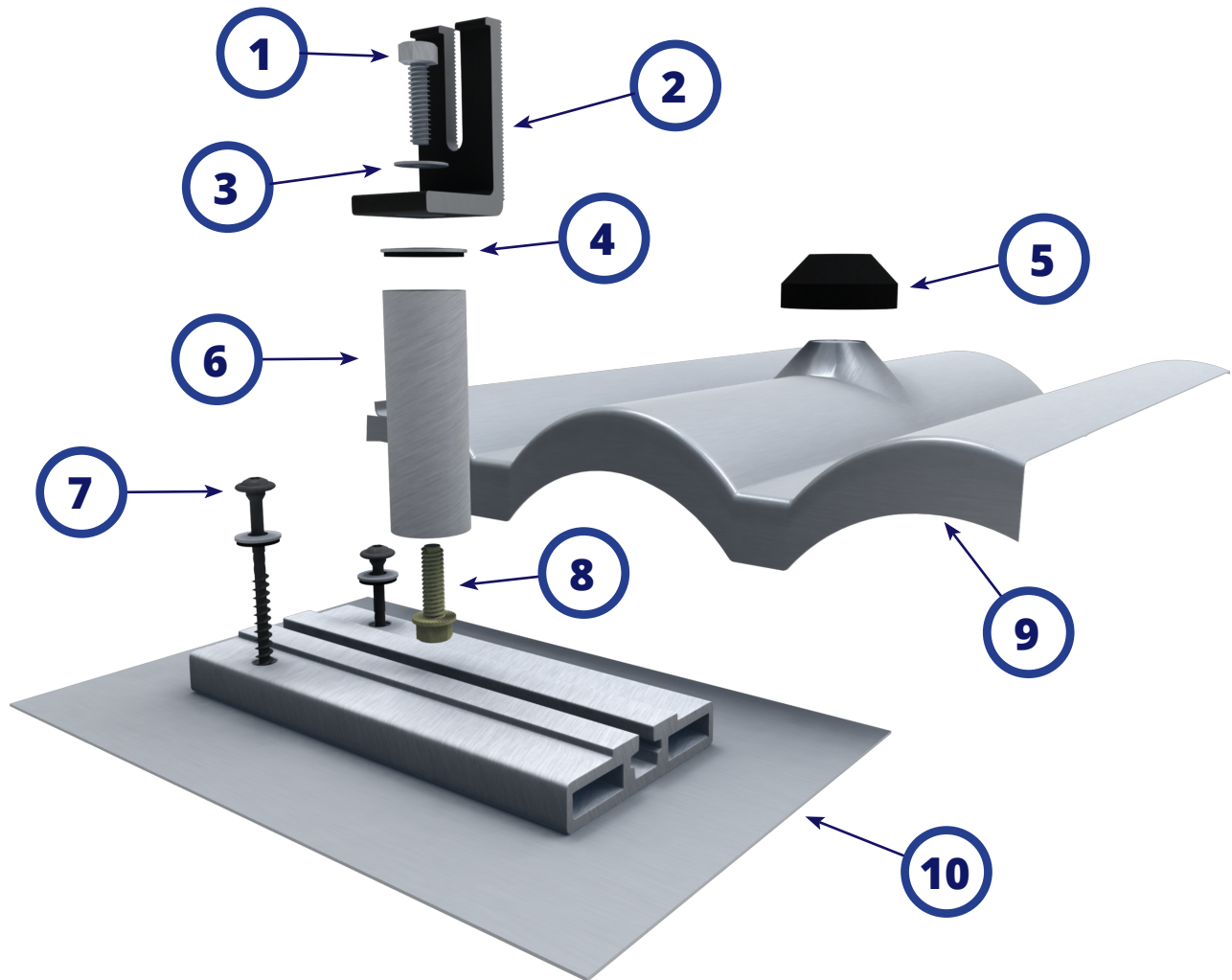
FEATURES + BENEFITS

TR-MOUNT

INSTALLATION GUIDE



SYSTEM COMPONENTS



1. 5/16"-18 CAP SCREW
2. SCL-101 BLK 3" COMPRESSION BRACKET
3. 5/16" WASHER
4. 5/16" X 1-1/4" OD BONDED SEALING WASHER
5. EPDM RUBBER COLLAR
6. 3-1/4" POST
(4" POST USED FOR W-SHAPED FLASHING)
7. 5/16"-4 STRUCTURAL SCREW WITH PRE-INSTALLED 3/4" SEALING WASHER
8. 5/16" SERRATED GRADE-8 HEX BOLT
9. REPLACEMENT TILE FLASHING
(FLAT, S & W OPTIONS)
10. TILE REPLACEMENT BASE ASSEMBLY.

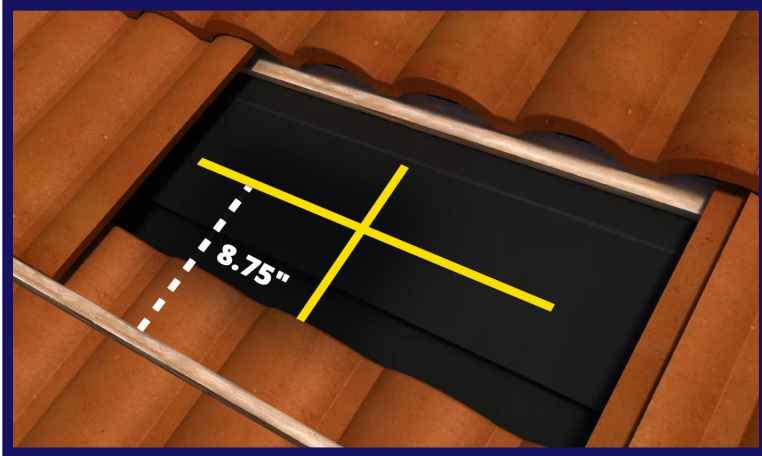
COMPONENTS

TR-MOUNT

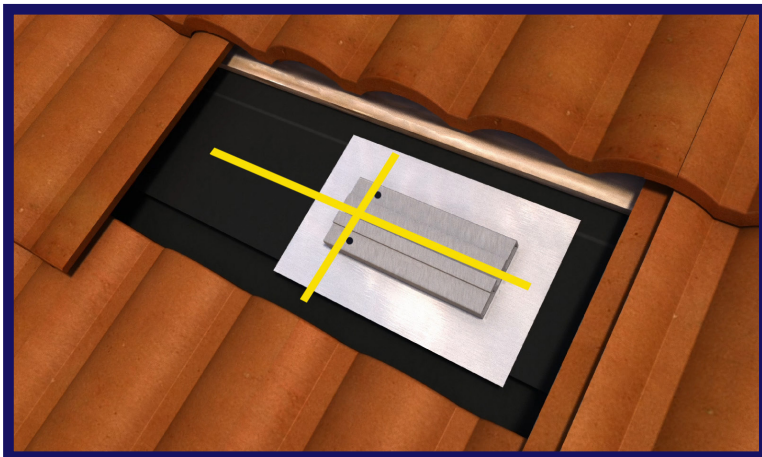
INSTALLATION GUIDE



INSTALLING TR-MOUNT



Locate and remove the tile that will be replaced by the tile replacement flashing. Remove tile to the left of and above the mount location. Locate rafter and mark center. Measure 8-³/₄" up from bottom of the adjacent tiles and mark the location with a horizontal line across rafter.



Align the base plate over rafter so the lag holes line up with the rafter line and horizontal line aligns with the post groove. The orientation of the base plate can be flipped east-west for post location versatility of up to 12 ¹/₄". Mark location of lag holes on the roof.



Drill two pilot holes using 1/8" bit to a depth of 2 ³/₄". Be sure lags go into center of rafter for strongest attachment. Pilot holes reduce rafter splitting. Fill pilot holes with appropriate sealant and align lag holes over the pilot holes.

TR-MOUNT

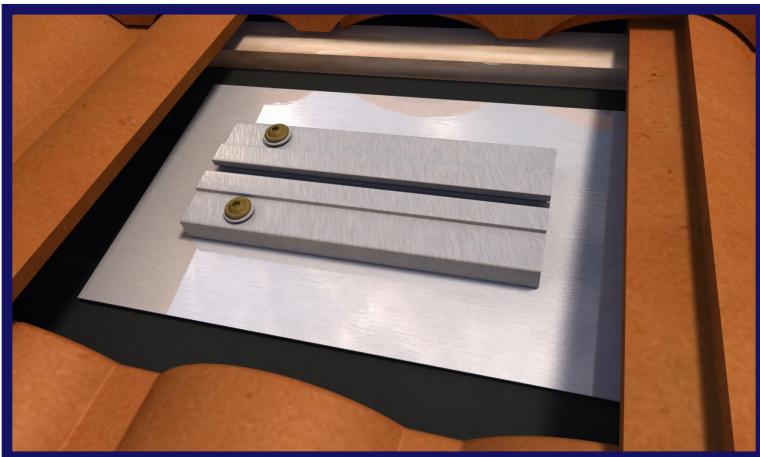
INSTALLATION GUIDE



INSTALLING TR-MOUNT



Waterproof at underlayment level according to roofing manufacturer instructions and Tile Roofing Institute Guidelines. Alternative Flashing Methods may be approved by the AHJ at their discretion.



Use T-30 Torx bit and impact gun to secure mount into rafter with provided hardware.



Insert the grade-8 serrated flange bolt into the bottom of the post. Slide post into base plate channel. Line up post with the hole in the tile replacement flashing. Leave loose for adjustments.

INSTALLATION

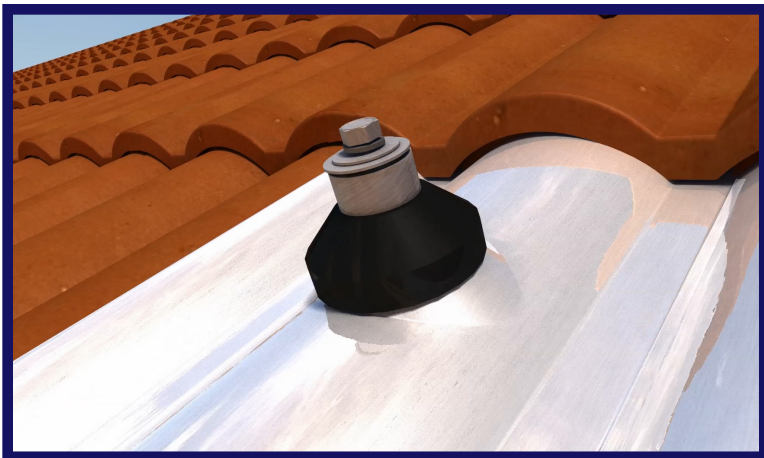
TR-MOUNT INSTALLATION GUIDE



INSTALLING TILE MOUNTING SYSTEM



Replace any additional tiles that were removed adjacent to the location of the tile to be replaced, then place the tile replacement flashing over the post and mount, allowing flashing to interlock with surrounding tiles properly. Secure the post by tightening it down using a pair of channel lock pliers. Replace surrounding tiles.



Apply a bead of sealant where the post meets the flashing. Slip the EPDM collar over the post and onto the flashing.



Install desired bracket or L-Foot using the included racking hardware. Take care to install 1-1/4" bonded sealing washer directly to the top of the post to keep out water. Install the L-foot to the top of this washer.

NOTE: It is important to seal off the post from water intrusion if not installing racking right away.

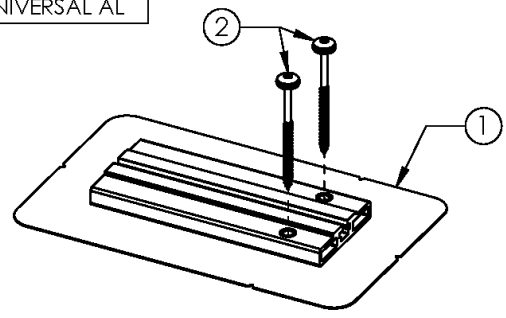
INSTALLATION

TR-MOUNT INSTALLATION GUIDE



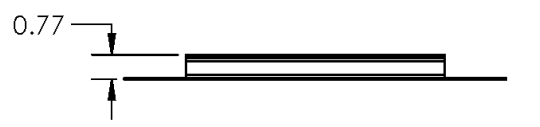
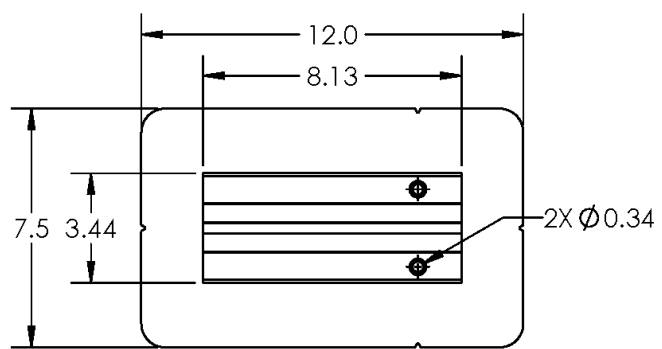
CUT SHEET: TR BASE UNIVERSAL AL

PART NUMBER	DESCRIPTION
3013019	TR BASE UNIVERSAL AL



ITEM NO.	DESCRIPTION
1	TILE REPLACEMENT, BASE MOUNT, MILL, ASSEMBLY
2	HARDWARE SUB-KIT, PRE-LOADED, 5/16" X 4" STRUCTURAL SCREW, 3/4" OD SEALING WASHER ASSEMBLY

1) TILE REPLACEMENT, BASE MOUNT, MILL, ASSEMBLY



Material	Aluminum
Finish	Mill

REV.- CS1

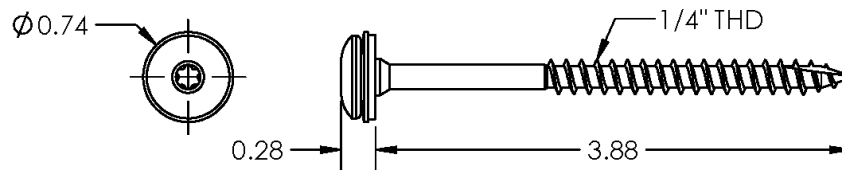
LINE DRAWINGS

TR-MOUNT INSTALLATION GUIDE



CUT SHEET: TR BASE UNIVERSAL AL

2) HARDWARE SUB-KIT, PRE-LOADED, 5/16" X 4" STRUCTURAL SCREW,
3/4" OD SEALING WASHER ASSEMBLY



Material	Stainless Steel/EPDM
Finish	Mill

REV.- CS1

PAGE
08

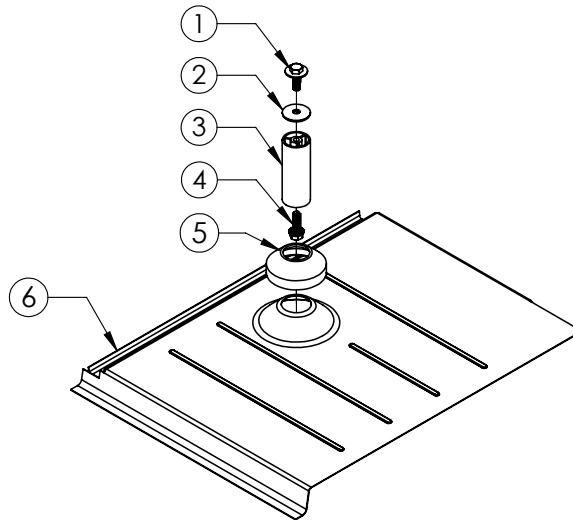
LINE DRAWINGS

TR-MOUNT INSTALLATION GUIDE



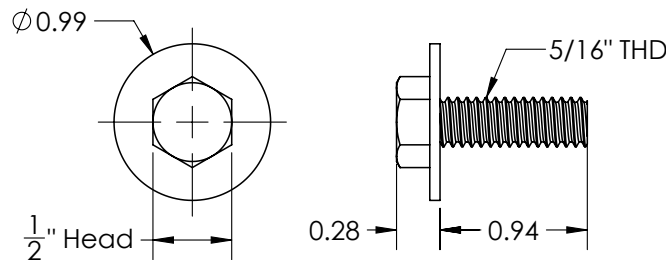
CUT SHEET: TR FLASH FLAT W/3.25" POST AL MLL

PART NUMBER	DESCRIPTION
3013021	TR FLASH F W/3.25" POST AL MLL



ITEM NO.	DESCRIPTION
1	CAP SCREW, 5/16"-18 X 1" UNC-2A, NYLON PATCH, W/ CAPTIVE WASHER, 1"OD
2	WASHER, SEALING, 5/16" ID X 1-1/4" OD, EPDM BONDED SS
3	POST, 1-1/4" OD X 3-1/4", MILL
4	CAP SCREW, SERRATED FLANGE, HEX HEAD, 5/16"-18 X 1" UNC-2A, MAGNI 525
5	COLLAR, COUNTER FLASHING, 1-1/4" ID
6	FLASHING, REPLACEMENT TILE, FLAT, 1" CONE, MILL

1) CAP SCREW, 5/16"-18 X 1" UNC-2A, NYLON PATCH, W/ CAPTIVE WASHER, 1"OD



Material	Stainless Steel
Finish	Mill

REV.- CS1

LINE DRAWINGS

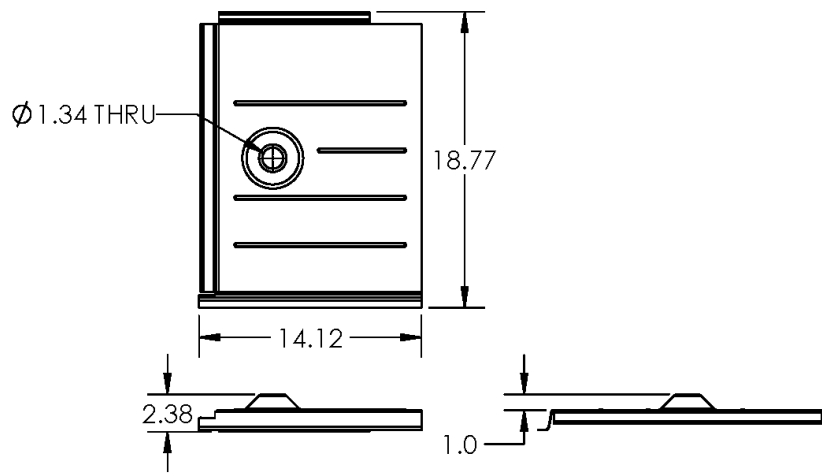
TR-MOUNT

INSTALLATION GUIDE



CUT SHEET: TR FLASH S W/3.25" POST AL MLL

6) FLASHING, REPLACEMENT TILE, FLAT, 1" CONE, MILL



Material	Aluminum
Finish	Mill

REV.- CS1

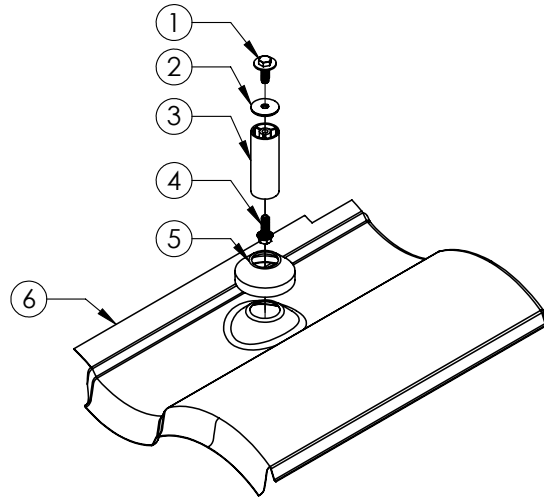
LINE DRAWINGS

TR-MOUNT INSTALLATION GUIDE



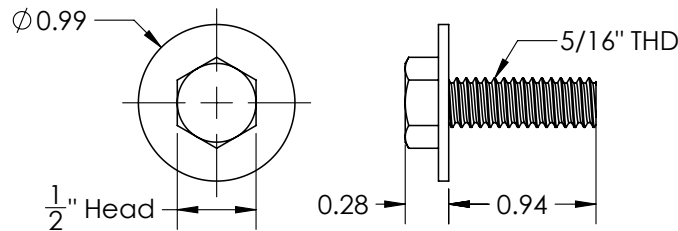
CUT SHEET: TR FLASH S W/3.25" POST AL MLL

PART NUMBER	DESCRIPTION
3013023	TR FLASH S W/3.25" POST AL MLL



ITEM NO.	DESCRIPTION
1	CAP SCREW, 5/16"-18 X 1" UNC-2A, NYLON PATCH, W/ CAPTIVE WASHER, 1"OD
2	WASHER, SEALING, 5/16" ID X 1-1/4" OD, EPDM BONDED SS
3	POST, 1-1/4" OD X 3-1/4", MILL
4	CAP SCREW, SERRATED FLANGE, HEX HEAD, 5/16"-18 X 1" UNC-2A, MAGNI 525
5	COLLAR, COUNTER FLASHING, 1-1/4" ID
6	FLASHING, REPLACEMENT TILE, S-TILE, 1" CONE, MILL

1) CAP SCREW, 5/16"-18 X 1" UNC-2A, NYLON PATCH, W/ CAPTIVE WASHER, 1"OD



Material	Stainless Steel
Finish	Mill

REV.- CS1

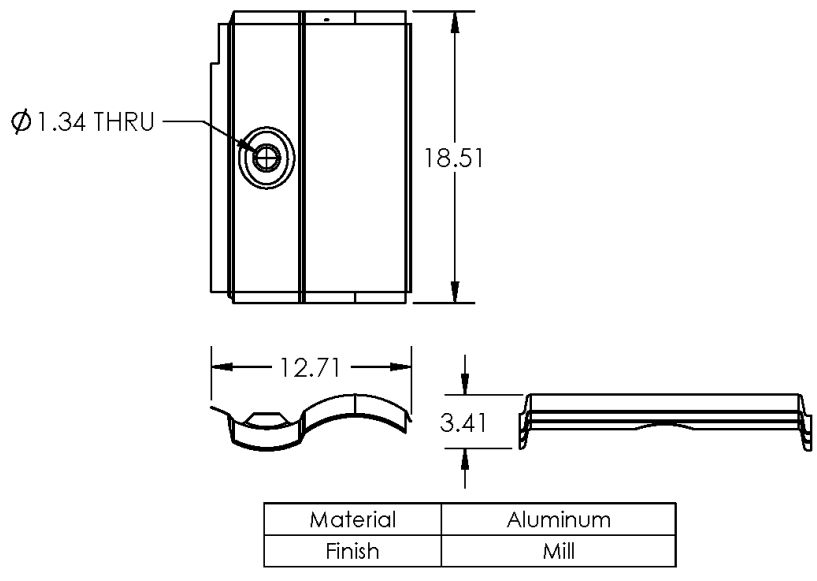
LINE DRAWINGS

TR-MOUNT INSTALLATION GUIDE



CUT SHEET: TR FLASH S W/3.25" POST AL MLL

6) FLASHING, REPLACEMENT TILE, S-TILE, 1" CONE, MILL



REV.- CS1

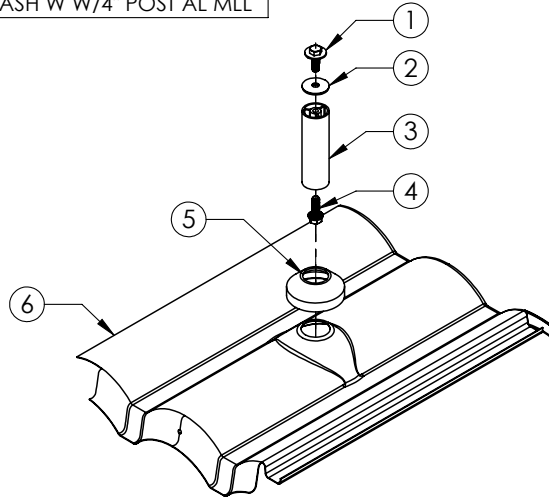
LINE DRAWINGS

TR-MOUNT INSTALLATION GUIDE



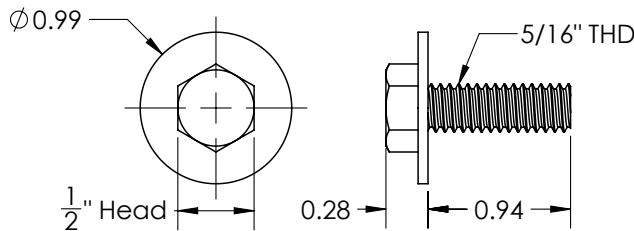
CUT SHEET: TR FLASH W W/4" POST AL MLL

PART NUMBER	DESCRIPTION
3013022	TR FLASH W W/4" POST AL MLL



ITEM NO.	DESCRIPTION
1	CAP SCREW, 5/16"-18 X 1" UNC-2A, NYLON PATCH, W/ CAPTIVE WASHER, 1"OD
2	WASHER, SEALING, 5/16" ID X 1-1/4" OD, EPDM BONDED SS
3	POST, HOLLOW, 1-1/4"OD X 4". MILL
4	CAP SCREW, SERRATED FLANGE, HEX HEAD, 5/16"-18 X 1" UNC-2A, MAGNI 525
5	COLLAR, COUNTER FLASHING, 1-1/4" ID
6	FLASHING, REPLACEMENT TILE, W-TILE, .625" CONE, MILL

1) CAP SCREW, 5/16"-18 X 1" UNC-2A, NYLON PATCH, W/ CAPTIVE WASHER, 1"OD



Material	Stainless Steel
Finish	Mill

REV.- CS1

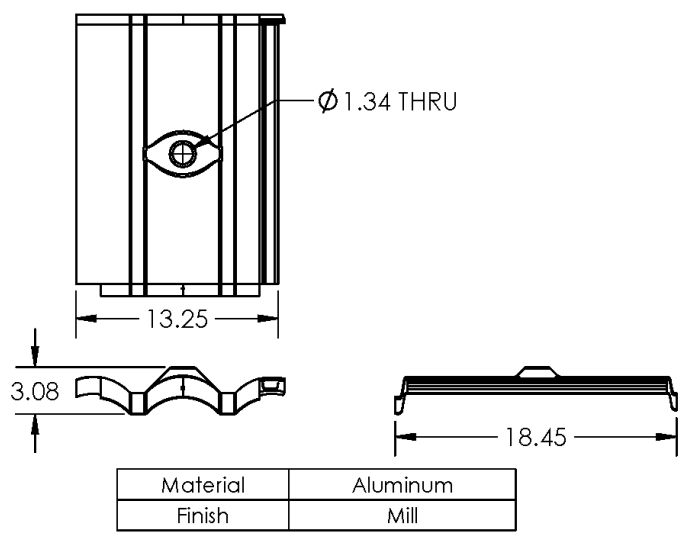
LINE DRAWINGS

TR-MOUNT INSTALLATION GUIDE



CUT SHEET: TR FLASH W W/4" POST AL MLL

6) FLASHING, REPLACEMENT TILE, W-TILE, .625" CONE, MILL



REV.- CS1

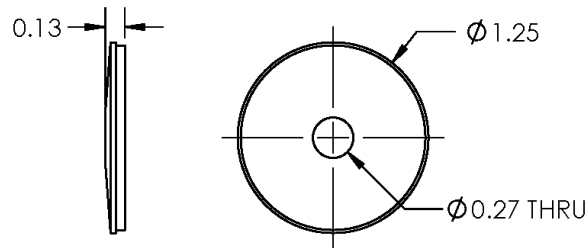
LINE DRAWINGS

TR-MOUNT INSTALLATION GUIDE



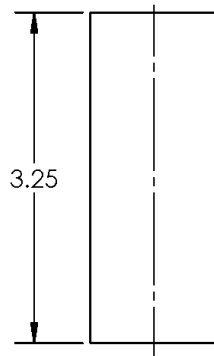
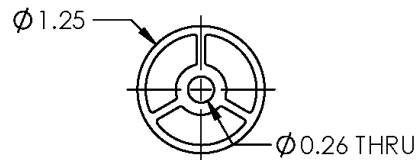
CUT SHEET: TR 3.25" POST AL MLL

2) WASHER, SEALING, 5/16" ID X 1-1/4" OD, EPDM BONDED SS



Material	Stainless Steel/EPDM
Finish	Mill

3) POST, 1-1/4" OD X 3-1/4", MILL



Material	Aluminum
Finish	Mill

REV.- CS1

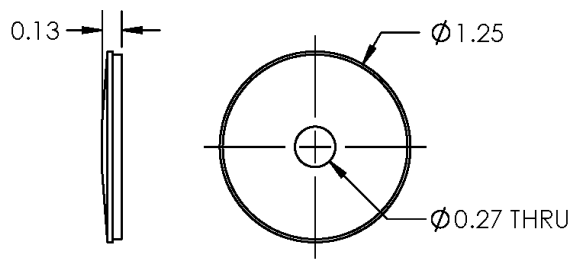
LINE DRAWINGS

TR-MOUNT INSTALLATION GUIDE



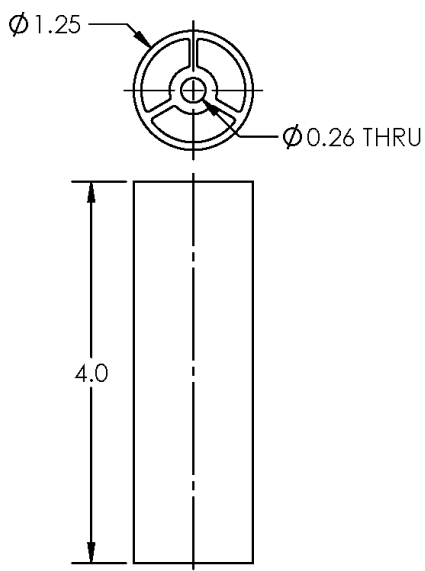
CUT SHEET: TR 4" POST AL MLL

2) WASHER, SEALING, 5/16" ID X 1-1/4" OD, EPDM BONDED SS



Material	Stainless Steel/EPDM
Finish	Mill

3) POST, HOLLOW, 1-1/4"OD X 4". MILL



Material	Aluminum
Finish	Mill

REV.- CS1

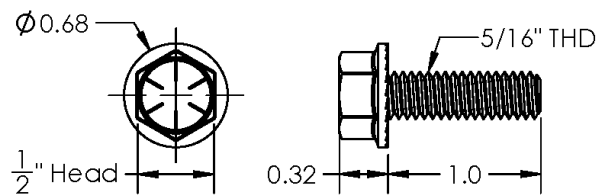
LINE DRAWINGS

TR-MOUNT INSTALLATION GUIDE



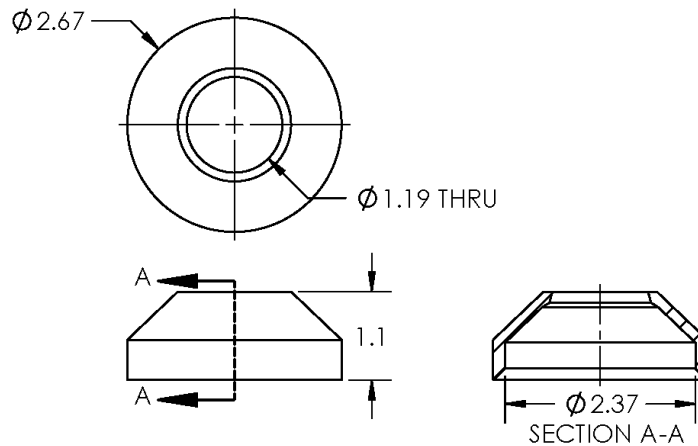
CUT SHEET: TR POST AL MLL

4) CAP SCREW, SERRATED FLANGE, HEX HEAD, 5/16"-18 X 1" UNC-2A, MAGNI 525



Material	Steel
Finish	Mill

5) COLLAR, COUNTER FLASHING, 1-1/4" ID



Material	EPDM
Finish	Black

REV.- CS1

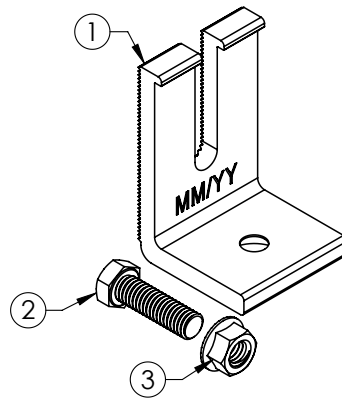
LINE DRAWINGS

TR-MOUNT INSTALLATION GUIDE



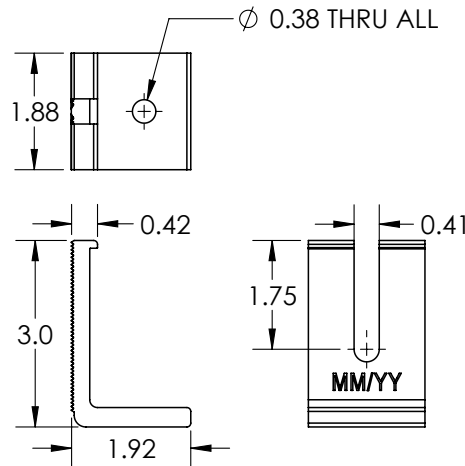
CUT SHEET: L-FOOT SCL-101 BLK 3"

PART NUMBER	DESCRIPTION
3011018	L-FOOT SCL-101 BLK 3"



ITEM NO.	DESCRIPTION
1	L FOOT W/ STANDARD DIMPLE AND OPEN SLOT, 3 IN TALL BLK
2	SS HEX HD CAP SCREW, FULL THD, 3/8-16 UNC X 1.25 LONG
3	SS SERRATED FLANGE LOCK NUT, 3/8-16

1) L FOOT W/ STANDARD DIMPLE AND OPEN SLOT, 3 IN TALL BLK



Material	Aluminum
Finish	Mill

REV.- CS1

LINE DRAWINGS

TR-MOUNT

INSTALLATION GUIDE



SYSTEM COMPONENTS

1. **Tile Base:**

Consists of (1) aluminum tile base, with pre-installed 7.5 x 12" flashing. Mill finish.

2. **Post:**

Consists of (1) 3-1/4" x 1-1/4" OD aluminum post for flat or S-shaped tile kits, or (1) 4" x 1-1/4" OD aluminum post for W-shaped tile kits, (1) 5/16"-18 cap screw with (1) 5/16" washer, 1 5/16" x 1-1/4" OD bonded sealing washer, and (1) 5/16" serrated grade-8 hex bolt.

3. **Flashing:**

Available in Flat, W and S-shaped profiles. Consist of (1) aluminum cone flashing with mill finish.

4. **Fastener:**

Two T-30 torx head 5/16"x4" structural screws with bonded sealing washer. (included with Tile Base)

5. **Recommended Sealant:**

If required by roof manufacturer, sealant shall be roof manufacturer approved.

DELIVERY / STORAGE / HANDLING

Inspect material upon delivery. Notify manufacturer within 24 hours of any missing or defective items. Keep material dry, covered and off the ground until installed.

TR-MOUNT INSTALLATION GUIDE



PATENTS

Visit www.efpatents.com for patent information.

DESIGN REQUIREMENTS

1. Bracket spacing to be recommended by project engineer.
2. Fasten attachment to roof using two lag screws.
3. It is important to design new structures or assess existing structures to make sure they withstand retained loads.

EXAMINATION

1. Substrate: Inspect structure on which brackets are to be installed and verify that it will withstand any additional loading that may be incurred.
2. Notify General Contractor of any deficiencies before installing EcoFasten Solar brackets.
3. Verify that roofing material has been installed correctly prior to installing solar attachment bracket.

INSTALLATION

Comply with architectural drawings and project engineer's recommendation for location of system. Comply with Manufacturer's written installation instructions for installation and layout.