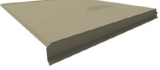
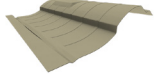
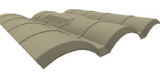



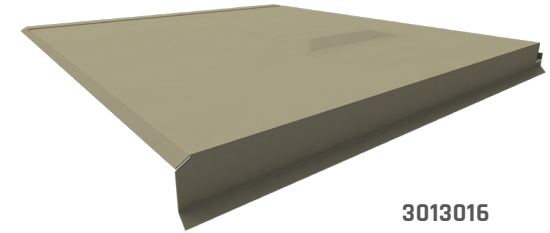


TILE HOOK FLASHING

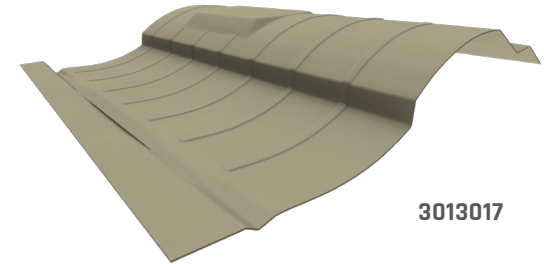
AVAILABLE SYSTEM COMPONENTS

	PRODUCT IMAGE	PART NUMBER	PART DESCRIPTION	BOX QUANTITY	PALLET QUANTITY
FLASHINGS		3013016	TILE HOOK FLASH FLAT AL ST	12	576
		3013017	TILE HOOK FLASH S AL ST	12	576
		3013018	TILE HOOK FLASH W AL ST	12	576
ACCESSORIES		2012026	CF UNIV TILE HOOK	20	800
		2012027	CF UNIV TILE HOOK SUB FLASH AL	20	3840
	INCLUDES (1) TEK SCREW (DOES NOT INCLUDE ONE HOLE PIPE STRAP & CONDUIT)				
		3011011	CONDUIT BRKT TILE MLL	60	4320

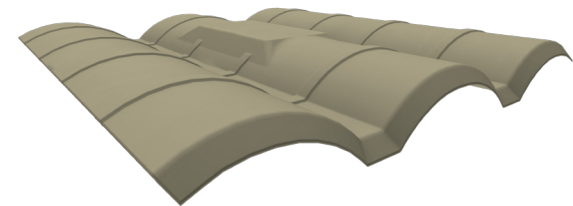
CHOOSE YOUR TILE PROFILE:



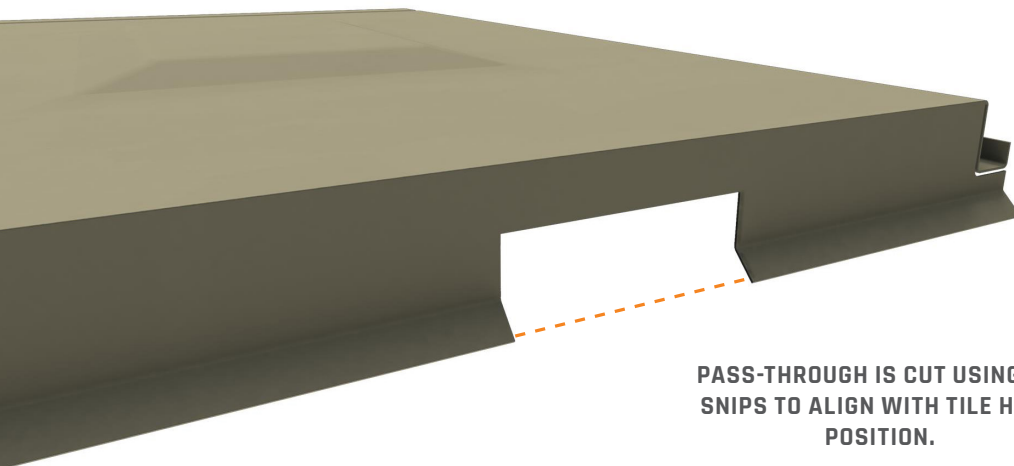
3013016



3013017



3013018



PASS-THROUGH IS CUT USING TIN SNIPS TO ALIGN WITH TILE HOOK POSITION.