

# TILE HOOK FLASHING

## STAND ALONE REPLACEMENT FLASHING FOR TILE HOOKS

Tile Hook Flashing is a stand-alone flashing that can be used independently with our ClickFit Universal tile Hook. It replaces a complete concrete tile, eliminating the need for cutting, drilling, or grinding of tiles. The flashing is available in three shapes to fit most tile profiles.

## FEATURES & BENEFITS

- Compatible with ClickFit Universal Tile Hook or third-party tile hooks
- Replaces a complete tile
- Available in Flat, S, and W-shaped tile profiles
- Sierra Tan finish blends with most roofs tiles

**ELIMINATES THE NEED FOR CUTTING,  
DRILLING, OR GRINDING TILES**

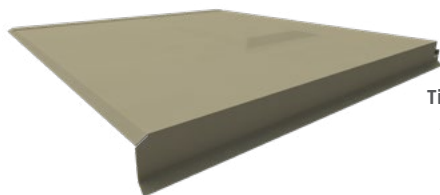


# TILE HOOK FLASHING

STAND ALONE REPLACEMENT  
FLASHING FOR TILE HOOKS

## CONFIGURATION OPTIONS

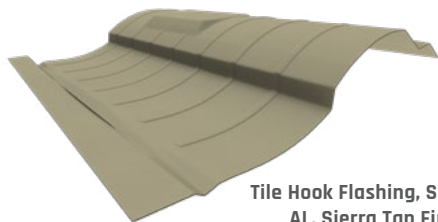
### 1. CHOOSE YOUR TILE PROFILE:



Tile Hook Flashing, Flat  
AL, Sierra Tan Finish

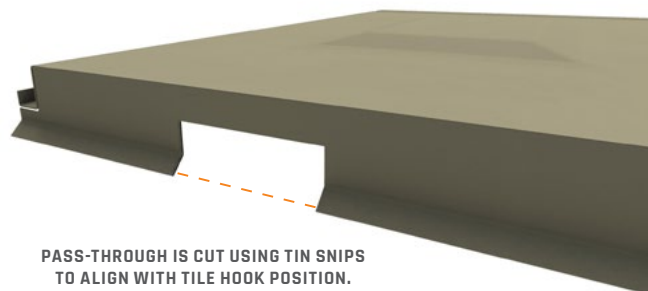


Tile Hook Flashing, W-Shaped  
AL, Sierra Tan Finish



Tile Hook Flashing, S-Shaped  
AL, Sierra Tan Finish

### HOW IT WORKS



PASS-THROUGH IS CUT USING TIN SNIPS  
TO ALIGN WITH TILE HOOK POSITION.

[VIEW THE COMPLETE PARTS LIST](#)