



eBoS

ELECTRICAL BALANCE OF SYSTEM

EcoFasten provides a complete range of electrical balance of system accessories (eBoS) that are compatible with our solar rooftop mounting systems and solar roof attachments. A successful solar installation relies on various factors such as the PV modules' efficiency, the solar roof mounting systems' strength and durability, and the reliability of the electrical balance of system accessories used. The #eBoS components play a vital role in ensuring the overall safety and functionality of an array.

ELECTRICAL COMPONENTS FOR OPTIMIZING PV INSTALLATIONS



**Junction Box,
Conduit, Bonding,
Wire Management**



**Direct-Attach,
Rail-Attach**



JUNCTION BOX



JUNCTION BOX

Our Junction Box can be deck-mounted or rail-mounted and is specifically sized to house four strings (DC/AC). Integrated weep holes, multiple oriented screw bosses, and pre-drilled guides on three sides (South, East, and West) provide a fast, assisted installation.

CONDUIT



CONDUIT MOUNTS: COMP, TILE, & METAL

Conduit Mount Brackets can be installed onto a variety of roof types to lift electrical conduit off the roof surface. The bracket composition bracket can be paired with a GF-1 flashing on a new or retrofit composition shingle roof. They can also be combined with a SimpleSeal bushing for use on metal roofs.

SMART CONDUIT MOUNT

Smart Conduit Mount can be attached to a rafter or directly to composition shingle roofs to run conduit across the roof in any direction. The integrated flashing utilizes our proprietary UltraGrip Technology™, creating a watertight seal.

BONDING



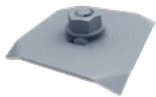
CLICKFIT MLPE MOUNT

The MLPE Mount attaches & mounts the Module Level Power Electronics to the top of the rail. The MLPE Mount was designed for use with our ClickFit system & can be placed anywhere along the rails.



MODULE JUMPER

The Module Jumper slides onto the frame of the PV module, bonding N-S (ClickFit) or E-W (RibFit). One Module Jumper per row or column of modules is required. Our Module Jumper can be installed quickly & easily to conform to UL 2703.



FRAME MLPE MOUNT

The Frame MLPE Mount attaches, mounts, & fully bonds Module Level Power Electronics to the module frame using a single-bolt clip. This accessory can be used with any racking system to attach the Module Level Power Electronics to the module frame.

WIRE MANAGEMENT



CLICKFIT WIRE MANAGEMENT CLAMP

The two-piece Wire Management Clamp installs quickly to the ClickFit rail, securing up to 4 PV wires or 2 trunk cables in place with one self-piercing screw.



FRAME WIRE MANAGEMENT CLIP

The Frame Wire Management Clip is a universal wire management clip that can be used with all systems. The clip mounts directly to the module frame holding PV cables, Q cables, and string cables.



CLICKFIT WIRE CLIP

The Stainless Steel ClickFit Wire Clip clicks onto the top of the rail & accommodates 1-3 PV wires. This clip can be installed on both the north & the south side of each rail for optimum wire management.



SIDE CLIP

The Side Clip clicks onto the outer edge of the module frame, eliminating the need to fasten wires to the underside of the module, making it the ideal choice for rail-less racking systems. Available in three standard module frame thicknesses—30MM, 32MM, and 35MM—and a versatile Universal option that easily adjusts to fit 30MM, 32MM, 35MM, and 40MM frames

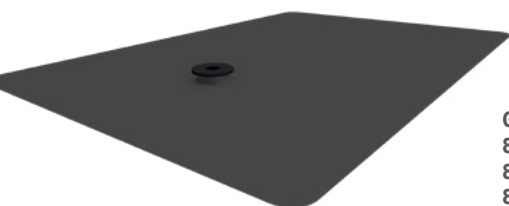


ELECTRICAL
COMPONENTS FOR
OPTIMIZING PV
INSTALLATIONS

CONFIGURATION OPTIONS

CONDUIT BRACKET COMP

THE CONDUIT BRACKET COMP COMBINES WITH THE GF-1 FLASHING FOR DIRECT-TO-DECK INSTALLATION ON COMPOSITION SHINGLE ROOFS.



GF-1 Flashing
8"x12", Galvalume Black
8"x10", Galvalume Black
8"x10", Aluminum Black 



**Conduit
Bracket Comp**

CONDUIT BRACKET METAL

THE CONDUIT BRACKET METAL COMBINES WITH THE SIMPLE SEAL EPDM BUSHING FOR DIRECT-TO-DECK INSTALLATION ON METAL ROOFS.



EPDM Simple Seal Bushing



**Conduit
Bracket Metal**

[VIEW THE COMPLETE PARTS LIST](#)