

SMART CONDUIT

ADAPTABLE WATERTIGHT
CONDUIT SUPPORT

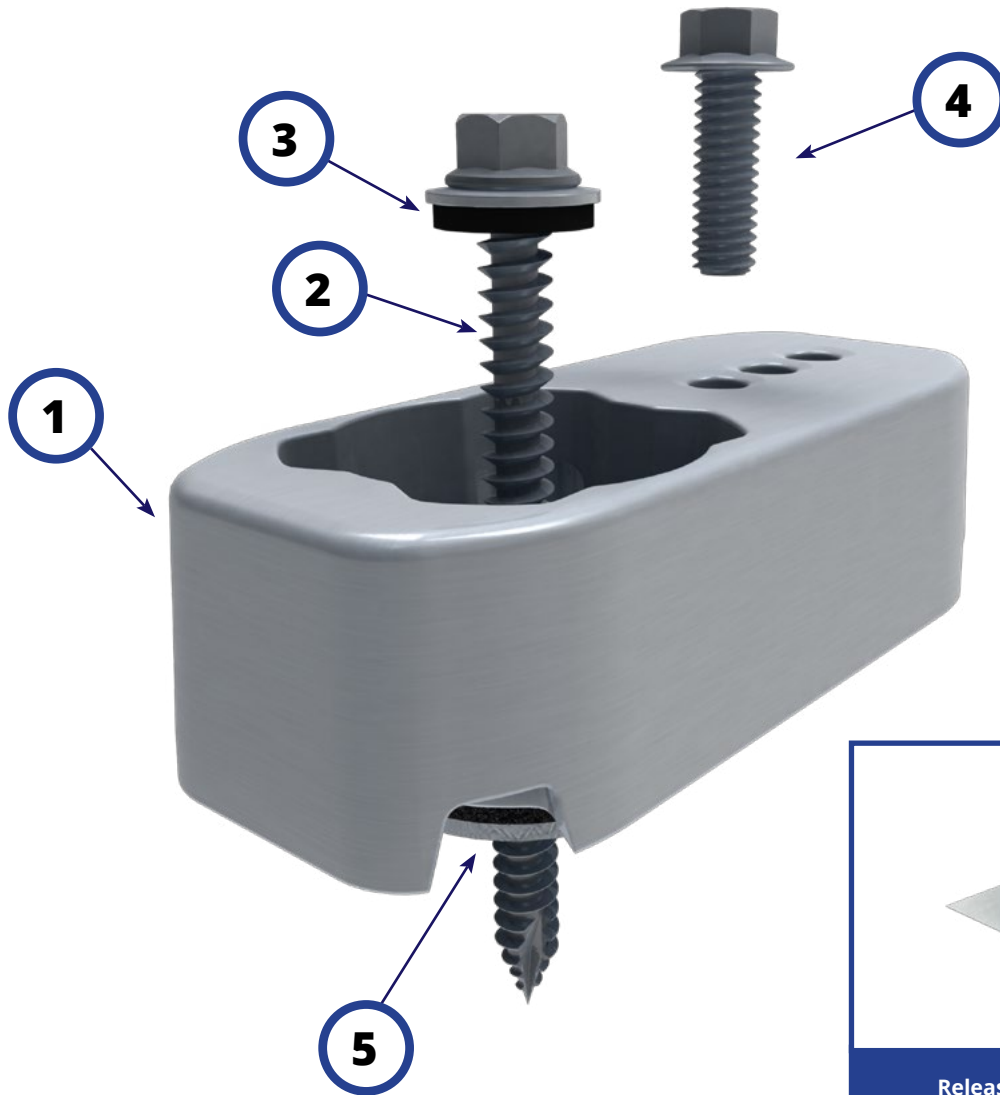
INSTALLATION GUIDE

REVISION DATE: 10/09/25

VERSION: v1.1

Smart Conduit Mount

INSTALLATION GUIDE



1. SMART CONDUIT MOUNT
2. SELF DRILLING SCREW, #14, WOOD TIP
3. WASHER, EPDM BACKED

4. THREAD ROLLING SCREW, HEX FLANGE HEAD
5. ULTRAGRIP TECHNOLOGY™ INTEGRATED FLASHING SYSTEM

****Conduit Strap not included****

COMPONENTS

Smart Conduit Mount

INSTALLATION GUIDE

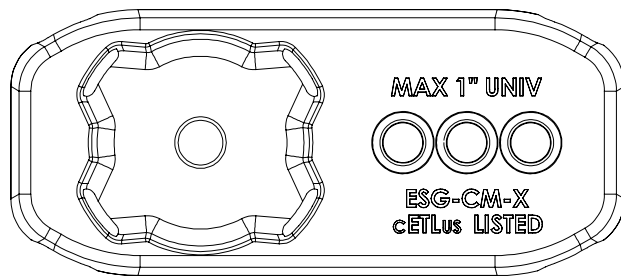


RATINGS

| | |
|--|---|
| Temp Rating | -40° C to 90° C (-40°F to 194°F) |
| Load Rating | 60 lbs |
| Locations | Suitable for use in wet locations |
| Approved Conduit Types | MAX 1" UNIV - EMT, RMC, IMC, Rigid PVC and Liquid Tight Flexible Metallic Conduit MAX 1-1/4" - EMT and Rigid PVC |
| Certification | Conforms to UL STD 2239 and Certified to CSA STD C22.2 No. 18.4, Conforms to UL SUBJECT 2703A |
| Thread Rolling Screw Torque Value | 40 in-lbs |
| Support Interval | Suitable for Max 3.05 m (10 ft) |

UL 2239 & UL 2703A LISTED

Marking located on top of Mount



#5026534

INSTALLER NOTES

- Approved for use with listed hangers, straps or other alternative mounting devices, such as strut, bridging or other components.

Water Seal Ratings

- TAS 100A-95 "Wind Driven Rain Test"
- UL Standard 441 Section 27 "Rain Test"
- Steep Slope Ratings applicable for Asphalt Shingle roofs with slopes 2:12 and up
- Low Slope Ratings applicable for Roll Roofing (Rolled Comp) roofs with slopes 1:12 and up
- Low Slope Ratings applicable for Modified Bitumen (Mod-Bit) roofs with slopes 1/4:12 and up
- Tested and evaluated without sealant

Smart Conduit Mount

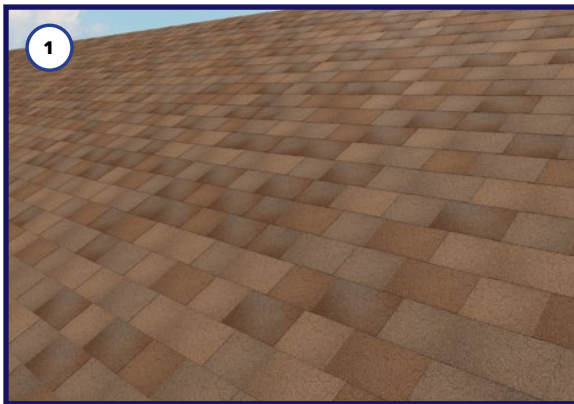
INSTALLATION GUIDE



SMART CONDUIT MOUNT INSTALLATION

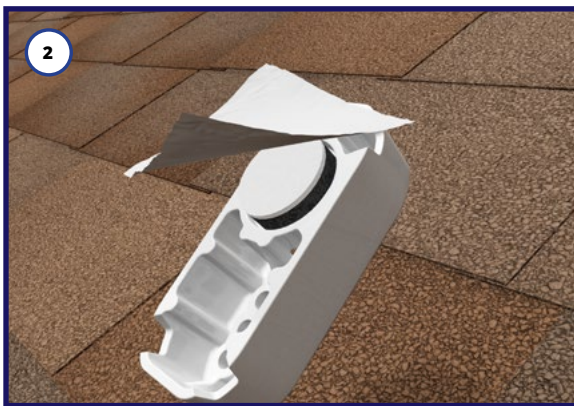
TOOLS REQUIRED: Tape measure, chalk line, marking tool, hand brush, impact driver, and 5/16" hex socket with adapter (or 5/16"x4" power nut setter).

INSTALLATION TEMPERATURE: Min Ambient Temp = 5° F (-15° C) / Max Ambient Temp = 118° F (48° C)



1 Prepare Smart Conduit Mount location by brushing away dirt and debris. Ensure no snow or ice is present, blot area dry if wet.

- Ensure that roofing shingles are in good condition and will last the lifetime of the solar array.
- Avoid storing boxes of Smart Conduit Mount in direct sunlight, store in shade whenever possible.



2 Remove release liner from the bottom of the Smart Conduit Mount and place it into position on the roof.

- Make sure to fully remove the release liner before installation.
- Determine Conduit Mount locations based on conduit run, follow NEC guidelines for spacing requirements.



3 Make sure to place the Smart Conduit Mount on the flat part of the shingle.

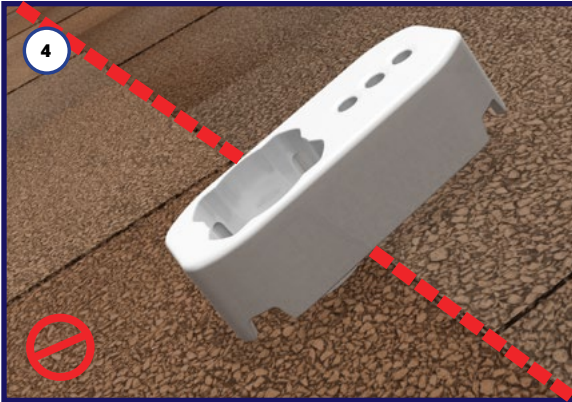
- Smart Conduit Mount can be installed 360° in any orientation.
- Adjust Smart Conduit Mount spacing as needed to avoid shingle steps, space no more than 10' apart.

Smart Conduit Mount

INSTALLATION GUIDE



SMART CONDUIT MOUNT INSTALLATION



- 4 Install Smart Conduit Mount on individual shingle course, DO NOT straddle two different shingle courses.



- 5 Drive the Structural Screw using 5/16" socket and tighten until EPDM washer is flattened and Smart Conduit Mount is secured.

- **NOTE:** Smart Conduit Mount will be very difficult to relocate, always double check before placing. If UltraGrip™ pad becomes damaged, replace Smart Conduit Mount.



- 6 Place conduit over Smart Conduit Mount, connect user supplied conduit strap or hanger to conduit, then secure into position by driving the included thread rolling screw into one of the three optional screw positions.

- **Tip:** The Smart Conduit Mount can be attached to the conduit before being secured to the roof.
- Smart Conduit Mount can be painted to match the roof.

Smart Conduit Mount

INSTALLATION GUIDE



DISCLAIMER

This manual describes proper installation procedures and provides necessary standards required for product reliability. Warranty details are available on the website. All installers must thoroughly read this manual and have a clear understanding of the installation procedures prior to installation. Failure to follow these guidelines may result in property damage, bodily injury, or even death.

IT IS THE INSTALLER'S RESPONSIBILITY TO:

- Ensure safe installation of all electrical aspects of the array. All electrical installation and procedures should be conducted by a licensed and bonded electrician or solar contractor.
- All work must comply with national, state and local installation procedures, product and safety standards, including the proper use of PPE.
- Comply with all applicable local or national building and fire codes, including any that may supersede this manual.
- Ensure all products are appropriate for the installation, environment, and array under the site's loading conditions.
- Use only EcoFasten parts or parts recommended by EcoFasten; substituting parts may void any applicable warranty.
- Review the Design Assistant and Certification Letters to confirm design specifications.
- Ensure provided information is accurate. Issues resulting from inaccurate information are the installer's responsibility.
- Ensure bare copper grounding wire does not contact aluminum and zinc-plated steel components, to prevent risk of galvanic corrosion.
- If loose components or loose fasteners are found during periodic inspection, re-tighten immediately. Any components showing signs of corrosion or damage that compromise safety shall be replaced immediately.
- Provide an appropriate method of direct-to-earth grounding according to the latest edition of the National Electrical
- Code, including NEC 250: Grounding and Bonding, and NEC 690: Solar Photovoltaic Systems.
- Disconnect AC power before servicing or removing modules, AC modules, microinverters and power optimizers.
- Review module and any 3rd party manufacturer's documentation for compatibility and compliance with warranty terms and conditions.
- Module mounting rails shall not be used as scaffolding, a roof jack, or any form of an anchoring point for roof personnel.
- Ensure that the roof is in good condition prior to installing any EcoFasten components.

DISCLAIMER

The logo for CLICKFIT, with 'CLICK' in white and 'FIT' in orange, followed by a registered trademark symbol.

INSTALLATION GUIDE

The EcoFasten logo, featuring a stylized sun icon to the left of the text 'EcoFasten' in white, with the tagline 'For Installers. By Installers.' below it.

FOR INSTALLERS. BY INSTALLERS.

Under the PanelClaw brand and Enstall's corporate umbrella, EcoFasten has established a reputation as one of the industry's leading innovators by providing expert solutions for mounting solar PV on any roof. EcoFasten's broad portfolio of solar rooftop mounting systems and attachments stems from the direct needs of solar PV installers. EcoFasten takes pride in providing the right solution for every application.



1295 W. WASHINGTON STREET, SUITE 110, TEMPE, AZ 85288
877-859-3947 | INFO@ECOFASTENSOLAR.COM | ECOFASTENSOLAR.COM